

# Big Hollow Elementary School

www.bighollow.us

January 22, 2010

## Important Dates

**Friday, January 29**

Elementary School  
Report Cards go home

Character Education Day

Wear **RED**

**Monday, February 1**

PTO Meeting

3:45 p.m. Primary Building

Free Babysitting Provided

**Tuesday, February 2**

Groundhog Day

**Friday, February 5**

Spirit Day

**Thursday, February 11**

1/2 day of school—  
early dismissal at 12:10

Parent/Teacher Conferences

1:00 p.m.-6:00 p.m.

**Friday, February 12**

No School

Parent/Teacher Conferences

8:00 a.m.—12:00 noon

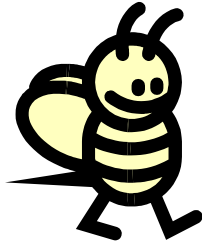
**Monday, February 15**

No School - President's Day

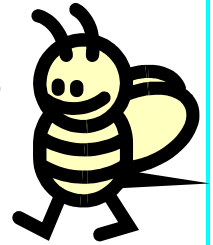
School Board Meeting

7:00 p.m. Middle School

## Spelling Bee



Congratulations to the following students who were the runner's up in the classroom competition: Neil, Kelly, Noah, Kaitlynn, Helen, Allyse, Collin, Kayla, Josh, Haley, Gladyse, Isabella, Amber, and Tyler.



Congratulations to the following students who represented their class in the fourth and fifth grade spelling bee on Tuesday, January 20: Sydney T., Kyle, Azam, Sydney M., Shalin, Alexia S., William, John, Madelynn, Aishu, Andy, Alexia R., Lindsey, and Emmanuel. The winner is Lindsey, who will represent Big Hollow at the Sectional Competition on February 17th. The runner up is Emmanuel.

## Big Hollow Students Care

We are continuing to collect pop tabs for the Ronald McDonald House. We have currently collected over 8 full 5 gallon buckets of pop tabs.

We will continue to collect pop tabs through the end of the school year.



## Help Needed

I'm in need of Big Hollow related photos for our 2009/2010 yearbook! I need photos including kids in Early Childhood-4<sup>th</sup> grade from: Class Parties, Fieldtrips, PTO Events, Assemblies, and Classroom Events. If you have a few, you can email them to me or if you have a bunch of photos from many Big Hollow events this year, you may put them on a CD and send it to the primary office, labeled with "Mrs. Longo- Yearbook Photos". Please include: grade, teacher, and event the photos are from. I CANNOT accept actual developed photos. Individual, group, and teacher photos are all needed. Photos will be accepted until February 18<sup>th</sup>. Anything would be greatly appreciated! Thanks so much!

Mrs. Longo J (amylongo@bighollow.us)

## Lunch Menu Changes

**MONDAY, 1/25**  
SALISBURY STEAK  
MASHED POTATO  
GREEN BEANS  
WHEAT ROLL

**TUESDAY, 1/26**  
CHICKEN NUGGETS  
POTATO ROUNDS  
DICED PEACHES

**WEDNESDAY, 1/27**  
PASTA/MEAT SAUCE  
SEASONED GREEN BEANS  
FRESH BABY CARROTS

**THURSDAY, 1/28**  
PIZZA DIPPERS  
GARDEN SALAD  
w/Dressing  
MANDARIN ORANGES

**FRIDAY, 1/29**  
HOT DOGS  
FRENCH FRIES  
APPLE SLICES

