

# Big Hollow Elementary School

www.bighollow.us

January 29, 2010

## Important Dates

### **Friday, January 29**

Elementary School  
Report Cards go home

### **Monday, February 1**

PTO Meeting  
3:45 p.m. Primary Building  
Free Babysitting Provided

### **Tuesday, February 2**

Groundhog Day

### **Friday, February 5**

Spirit Day

### **Thursday, February 11**

early dismissal at 12:10  
Parent/Teacher Conferences  
1:00 p.m.-6:00 p.m.

### **Friday, February 12**

No School

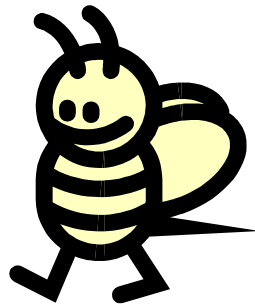
Parent/Teacher Conferences  
8:00 a.m.—12:00 noon

### **Monday, February 15**

No School - President's Day  
School Board Meeting  
7 p.m. Middle School

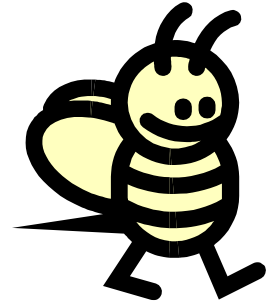
## Harlem Wizards Game

Come see Big Hollow Primary and Elementary Staff vs. the Harlem Wizards on Friday, February 19th at 7:30 p.m. at the Middle School. The Middle School Staff vs. the Harlem Wizards game will be on Monday, February 22 at 7:30 p.m. at the Middle School.



## Spelling Bee

Congratulations to the following second graders who represented their class in the Second Grade Spelling Bee: Vanessa, Kaleb, Sowmya, Tommy, Maela, Delaney, Daniel, and Chris. The winner was Sowmya and the runner up was Maela.



## Winter Olympics at Big Hollow

Opening day for the Winter Olympics at Big Hollow will be in February. We will need volunteers to help in gym class with the various events. Look for information next week with dates and times that volunteers will be needed.

## From the School Office

Please call the office if your child is not attending school. Please remember the school day begins at 8:40 a.m. and supervision begins at 8:25 a.m.

## Recycle paper at Big Hollow

Please add to the paper recycle bins located in the parking lots. Many families have a separate recycle bin just for paper! Newspaper, magazines, and school papers can all be recycled.

**\*\*\* The February hot lunch menu is printed on the back.\*\*\***

**Valentine Gram**-Send a pencil "Valentine Gram" to someone special. Send 25¢ for each pencil gram and the completed slip to school. Slips will be available in the office and again in next week's newsletter.

**Student Name**

\_\_\_\_\_

**Teacher Name**

\_\_\_\_\_

**From**

\_\_\_\_\_



**Student Name**

\_\_\_\_\_

**Teacher Name**

\_\_\_\_\_

**From**

\_\_\_\_\_

