

BIG HOLLOW MIDDLE SCHOOL

JANUARY NEWSLETTER

Ms. April Miller, Principal
Mr. Matt Mayer, Dean of Students

BHMS Phone 1-847-740-5322
BHMS Fax 1-847-740-9021

Principal's Message

Welcome back! I hope the holiday season was enjoyable for all and that we are well rested and recharged.

During the weeks of 1/4/2012-1/20/2012 our district will be administering winter screening/benchmark reading and math assessments for all students within the district. During this timeframe all RTI support services will be suspended to accommodate our testing schedule. Upon completion of our winter benchmark assessments, RTI support services will resume. If there are any questions and/or concerns that you may have please feel free to contact Donelle Staples, RtI Facilitator, at 847-740-1490 X3031.

January brings the beginning of exciting changes for our Eighth Grade students as they prepare to transition to Grant High School. Grant High School will be holding Eighth Grade Enrollment nights during the month of January. Big Hollow students are scheduled to attend on Wednesday, January 25. Each School District is assigned a specific date and only packets of information for their respective students will be available that evening. Parents are required to bring the original birth certificate of their freshman student for verification purposes, complete and return the internet authorization form and pick up another packet of information for the evening. Parents will receive a letter from Grant High School outlining the format for the evening as well as documents to bring to Enrollment Night.

Spring Parent-Teacher Conferences are scheduled for **Thursday, February 16 and Friday, February 17**. All parents are encouraged to meet with their child's team, however parental information forms will indicate if a team is requesting a conference or if they feel a conference is unnecessary. Information on Spring Conferences will be sent home in report card folders

Ms. April Miller
Principal



Important Dates

- 1/4-6 No Grant High School Math*
- 1/10 Scripps National Spelling Bee*
- 1/11 Market Day*
- 1/12 End of Quarter 2*
- 1/16 No School-
Martin Luther King Jr. Day*
- 1/20 Report Cards go home*
- 1/20 7th/8th Grade Friday Night Out*
- 1/23 Board of Education Meeting*
- 1/25 8th Grade Enrollment Night
Grant High School*



Big Hollow Band and Chorus News

Ms. Reis, Band Director

Ms. Dee, Big Hollow Singers Director

Please join us on **Thursday, March 15, at 7:00 p.m.** for the Big Hollow Band and Choir Spring Concert.

SAVE THE DATE!

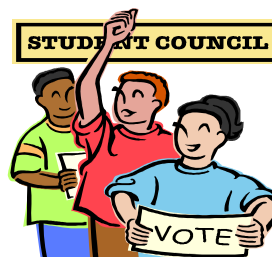
8th Grade
Springfield Trip
TUESDAY, APRIL 4!



8th Grade Springfield Trip-Wednesday, April 4, 2012. We leave at 5:30 a.m. and will return at approximately 10:30 p.m. (Students do not have school on Thursday, 4/5 or Friday, 4/6). Price is \$98.00 which includes coach bus ride, admission to all sites, and buffet dinner.

More information and forms will be sent home with the 2nd quarter report card.

STUDENT COUNCIL NEWS



In December, the student council finished its annual candy cane sale and hosted a successful holiday dance. Coming up in January is the pop tab collection for the Ronald McDonald House, so make sure you continue saving up your pop tabs! The winning grade level will get to watch a movie in February. Also, January recycling proceeds will benefit 5th grade. Please remember to bring in paper from home!

CHARACTER COUNTS AT BIG HOLLOW MIDDLE SCHOOL!



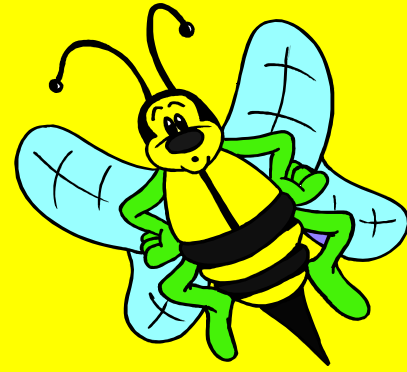
December/January Character Trait CARING

Be kind • Be compassionate and show you care • Express gratitude • Forgive others • Help people in need

SPELLING BEE

TUESDAY, JANUARY 10, 7:00 PM

MIDDLE SCHOOL CAFETERIA



TIPS TO SUPPORT YOUR STUDENT

CARING continues to be the character trait we at Big Hollow Middle School will focus on for the month of January. In last month's newsletter, we mentioned there are two behaviors especially necessary for positive and supportive interaction between students. The first one is being a good listener and the second is giving compliments. These two skills are important for your student to create positive bonds. Caring or more specifically passion impacts all bonds with people and drives the chemicals in the brain to activate. Passion drives us to love, care, want, need, crave, suffer and create; passion can be loving or hateful. The mind requires directed passion, whether in raising healthy children, making a marriage amazing, thriving in school/professionally, or excelling at a hobby. The mind of passion is often influenced by significant past life events. To harness your brain's power it needs direction and vision. You are more likely to be successful if you define success clearly, specifically, in writing, with detail. Dr. Daniel Amen suggests, "One simple way to help manage our lives better is to have clear, passionate, written goals—goals that sustain and motivate." As a family sit down and develop goals that are important to you. Give your brain some direction to help make life what you want it to be. As you know what you want it is critical to move your behavior toward your goals and away from things you do not want. Teach yourself to be focused on what's important to you. Write down your goals, today.

2011-2012 Wrestling Schedule

Date		Opponent	Home/ Away	Time
1/14/2012	Sa	Caruso Tournament (@Deerfield)	A	9:00 a.m.
1/17/2012	T	Tri: Alden Hebron/Park	H	4:15 p.m.
1/19/2012	Th	Round Lake	H	4:15 p.m.
1/23/2012	M	McHenry MS	H	4:15 p.m.
1/25/2012	W	Deer Path (Lake Forest)	A	4:15 p.m.
1/28/2012	Sa	5 Team Round Robin Tournament: Hawthorn North, Carl Sandburg, Park- land, Antioch	H	9:00 a.m.
1/31/2012	T	Palombi	A	4:15 p.m.
2/1/2012	W	Stanton	H	4:15 p.m.
2/4/2012	Sa	Wauconda Tournament	A	TBA
2/7/2012	T	Highland MS (Libertyville)	A	4:15 p.m.
2/9/2012	Th	Millburn	A	4:15 p.m.
2/13/2012	M	Magee (Round Lake)	A	4:15 a.m.
2/15/2012	W	Oak Grove	A	4:15 p.m.
2/18/2012	Sa	Conference Tournament @Alden Hebron	A	TBA
2/25/2012	Sa	Regionals	A	TBA
3/3/2012	Sa	Sectionals @Antioch UGS	A	TBA
3/9/2012	Fr	State Finals @NIU DeKalb	A	TBA
3/10/2012	Sa	State Finals@NIU DeKalb	A	TBA

BIG HOLLOW SCHOOL
2012 GIRLS BASKETBALL SCHEDULE

DATE	OPPONENT	TIME
7th Gr. game first and 8th Gr. game second		
Sat. Jan 21	Big Hollow @ Gavin 7th Gr. 8th Gr. (Non Conference Game)	10:00 a.m. 11:00 a.m.
Mon. Jan. 23	Big Hollow @ McHenry Middle School "A" and "B" game for each team (non-Conference Game)	4:00 p.m.
Thurs. Jan 26	Big Hollow @ Harrison	4:15 p.m.
Mon. Jan. 30	Montini @ Big Hollow	4:30 p.m.
Tues. Jan 31	Prairie Crossing @ Big Hollow	4:15 p.m.
Thurs. Feb. 2	Big Hollow @ Grass Lake	4:15 p.m.
Tues. Feb. 7	Big Hollow @ North Prairie	4:15 p.m.
Thurs. Feb. 9	Stanton @ Big Hollow	4:15 p.m.
8th Gr. game first & 7th Gr. game second		
Tues. Feb. 14	Park @ Big Hollow	4:15 p.m.
Wed. Feb. 15	Emmons @ Big Hollow	4:15 p.m.
Tues. Feb. 21	Big Hollow @ Alden Hebron	4:15 p.m.
Thurs. Feb. 23	Johnsburg @ Big Hollow	4:15 p.m.
2/27, 2/29 & 3/2	7th Gr. Conference Tournament @ North Prairie or Johnsburg	
2/28, 3/1 & 3/6	8th Gr. Conference Tournament @ Emmons or Park	