

Big Hollow School District #38 Ingleside, IL 60041

REGULAR BOARD OF EDUCATION MEETING MINUTES

Monday, September 14, 2021

1. Call to Order and Roll Call:

The regular meeting of the Board of Education was called to order at 6:01 p.m. on Monday, September 13, 2021.

Roll Call:

The following member were in attendance: Bennett, Dollinger, Kueter, Lyons, Pedersen, Plescia

The following members were absent: Cernuska

The following administration was present: Gold

2. Motion to move to Closed Session:

A motion was made by Kueter and seconded by Dollinger to move to closed session at 6:03 pm
Motion carried.

Aye: Kueter, Dollinger, Bennett, Lyons, Pedersen, Plescia

Nay: None

3. Resume to Open Session:

Open session began at 6:46 pm.

The following members were in attendance: Bennett, Dollinger, Kueter, Lyons, Pedersen, Plescia

The following members were absent: Cernuska

The following administration were present: Gold, Arndt, Biancalana, Hetrovicz, Janusz, King, McCulley, Pitman, Meek

The meeting was available via live stream.

4. Pledge of Allegiance:

The Pledge of Allegiance was recited.

5. Conduct Hearing on the 2021-2022 Budget

A motion was made by Bennett and seconded by Plescia to enter the budget hearing.
Motion carried.

Aye: All

Nay: None

Mr. Gold detailed the 2021-2022 budget as presented to the board. He emphasized that the goal is to continue to move forward with regards to the balancing of the budget. Although the budget will be tight this school year, he is confident that we will continue on the path of moving in the right direction. Mr. Lyons made mention of the tax payments that show in the month of June, which causes this month to appear inflated.

A motion was made by Pedersen and seconded by Kueter to exit the budget hearing.
Motion carried.

Aye: All
Nay: None

6. Added Items/Approval of the Agenda:

A motion was made by Plescia and seconded by Kueter to approve the agenda as written.
Motion carried.

Aye: All
Nay: None

7. Board Member "Code of Conduct" Review:

_____ Item #9: "I will respectfully listen to those who communicate with the Board, seeking to understand their views, while recognizing my responsibility to represent the interests of the entire community."

8. Approve Consent Agenda Items:

A motion was made by Plescia and seconded by Dollinger to approve the consent agenda items with the addition of raises for paraprofessionals and building secretaries.
Motion carried.

Aye: Plescia, Dollinger, Lyons, Bennett, Kueter, Pedersen
Nay: None

9. Public Comments:

Public comments were heard by Stephanie Meek, Middle School Assistant Principal and Evelyn Vasey, Middle School student.

10. Superintendent's Report:

_____ a. Mr. Gold shared a listing of all new certified staff members. Those that were in attendance had the opportunity to share with the board a little about themselves.

PRIMARY:

Name	Position
Katie Boyd	PreK Teacher
Barbara Gomez	Music Teacher
Aneta Luszczyk	Social Worker

ELEMENTARY:

Name	Position
Amanda Bergquist	ELL Teacher
Shannon Byker	3rd Grade Teacher
Missy Carr	2nd Grade Teacher
Sabrina Fortunski	3rd Grade Teacher
Vicki Stewart	3rd Grade Teacher
Kirsten Wilhelm	4th Grade Teacher

MIDDLE:

Name	Position
Thelma Allen	Bilingual Teacher
Nicole Buschek	6th Grade ELA Teacher
Bradley Doherty	6th Grade Social Studies
Kim Hanson	5-8 Electives Teacher
Heather Kolaski	5th Grade ELA Teacher
Chloe Kotiw	7th Grade Social Studies Teacher
Amanda McDonough	5th Grade Math Teacher
Catherine Polglaze	8th Grade Math Teacher
Jodie Ruden	6th Grade Science Teacher
Thomas Schorsch	8th Grade ELA Teacher
Ashleigh Wonsil	ELL Teacher

b. Certified employees that have received tenure status at the beginning of the 2021-2022 school year were honored.

- Hannah Ball (2nd Grade Teacher - Big Hollow Elementary)
- Douglas Erickson (6th Grade Math Teacher - Big Hollow Middle School)
- Heather Fischer (Math Specialist - Big Hollow Middle School)
- Kimberly Frazier (Speech Pathologist - Big Hollow Primary School)
- Kristen Glover (3rd Grade Teacher - Big Hollow Elementary School)
- Michael Gorelick (8th Grade Science Teacher - Big Hollow Middle School)
- Traci Hoos (Special Education Teacher - Big Hollow Primary School)
- Kristina Lancaster (2nd Grade Teacher - Big Hollow Elementary School)
- Sarah Loessl (7th Grade Science Teacher - Big Hollow Middle School)
- Sofia Mantzoukis (Bilingual Teacher - Big Hollow Elementary School)
- Sarah Nettis (School Psychologist - Big Hollow Elementary School)
- Erin Peska (5th Grade Science Teacher - Big Hollow Middle School)
- Kristina Vanderwerff (Social Worker - Big Hollow Elementary School)
- Bonny Walters (5th Grade Math Teacher - Big Hollow Middle School)

c. Return-to-School Discussion

Mr. Gold shared some back-to-school details. He indicated that although we face challenges on a daily basis everyone at Big Hollow steps in to help in any way possible. An update on the Shield testing was provided. The company running the program has proven difficult in getting the program up and running. We are looking into alternate options and will have more information for parents soon.

We continue to have a shortage of paraprofessionals and substitute teachers.

Pick up and drop off from parents and buses has improved dramatically since the first Day. There have been minimal issues with students wearing masks.

The state is providing free breakfast and lunch to all students this school year. Some parents have expressed a concern that students are eating at home and then again at school or taking free lunch as well as bringing a lunch from home.

d. Diversity, Equity, Inclusion Update

Jessica M. Oladapo, who has provided service and training to Big Hollow School District over the past year, updated the Board on work that is planned for the 2021-2022 school year.

She presented an exhibit that detailed goals as well as how important it is that all members of Big Hollow (students, staff, and families) take part in the education of our students. We should appreciate all the individual things that students bring to the classrooms. "*Seeing*" them has a positive impact on self efficacy, academic achievement, relational interactions and has a positive impact on future outcomes for the community."

Dr. Vicki King also shared her role in leading various school and district teams through this important work.

The board of education asked that they be kept up to date on the progress of the goals presented.

- e. Board Policy update on 2nd reading
Press Plus Issue 107 was presented and discussed.
Board policy 2:270, which was presented in August and was requested to be adjusted was removed and rewritten. It is presented later with the changes made.
A motion was made by Plescia and seconded by Pedersen to approve on 2nd reading the recent Board Policy update Issue 107.
Motion carried.

Aye: All

Nay: None

- f. New Board Policy 2:270
Based on discussions at the August board meeting, new board policy 2:270 was revised and presented.
A motion was made by Dollinger and seconded by Plescia to approve new board policy 2:270 as presented with the addition of the contact information to be added to the policy.
Motion carried.

Aye: All

Nay: None

- e. Analysis of Enrollment
6th day enrollment summaries were presented showing a data comparison from SY06-07 to SY21-22 as well as a breakdown of classroom enrollment for Primary and Elementary Schools.
There is an increase in enrollment from last year but we are still down from previous years.

11. Other Action Items:

- a. August Employment Report
A motion was made by Bennett seconded by Dollinger to approve the August employment report as presented.
Motion carried.

Aye: Bennett, Dollinger, Kueter, Lyons, Pedersen, Plescia
Nay: None
- b. The MOU which was agreed upon by our teacher evaluation committee was presented

to the board.

A motion was made by Pedersen and seconded by Plescia to approve the Memorandum of Understanding between the Board of Education of Big Hollow School District and the Big Hollow Federation of Teachers for COVID-19 related issues for the 2021-2022 school year.

Motion carried.

Aye: Pedersen, Plescia, Bennett, Dollinger, Kueter, Lyons

Nay: None

c. Adoption of the 2021-2022 Budget

A motion was made by Bennett and seconded by Dollinger to approve the 2021-2022 Budget as presented during the budget hearing.

Motion carried.

Aye: Bennett, Dollinger, Kueter, Lyons, Pedersen, Plescia

Nay: None

d. A lease agreement for a 2017 Chevy Collins 19 passenger bus with wheelchair lift included was presented to the board.

A motion was made by Bennett and seconded by Kueter to approve the lease of an additional school bus for the purpose of transportation of students requiring handicap accessibility.

Motion carried.

Aye: Bennett, Kueter, Lyons, Pedersen, Plescia, Dollinger

Nay: None

12. Resignations Accepted:

- Accepted a resignation from Tad Grabnik, Middle School Graphics Arts Teacher, effective August 10, 2021.
- Accepted a resignation from Amanda Masini, Elementary Paraprofessional, effective August 11, 2021.
- Accepted a resignation from Carrie Miller, Boys Soccer Coach, effective August 17, 2021.
- Accepted a resignation from Renee Lynk, Transportation and Lunch Monitor, effective August 27, 2021.
- Accepted a resignation from Mary Lavanholi, Lunch Monitor, effective August 23, 2021.
- Accepted a resignation from Gail Peterson, Middle School Paraprofessional, effective August 23, 2021.
- Accepted a resignation from Annamarie Houghton, Food Service worker, effective August 23, 2021.

13. Informational Items:

- a. Freedom of Information Act (FOIA) Requests
No FOIA requests were received for the month of August.
- b. Monthly Reports
The Monthly Administrator Report and Administrator agendas from August were presented to the board.
- c. The next regularly scheduled Board Meeting will take place on Tuesday, October 12, 2021.

14. Motion to move to Closed Session:

Not needed

15. Return to Open Session:

Not needed

16. Take any necessary action following closed session regarding minutes, employment of personnel, resignations, terminations or leaves of absence:

None

17. Adjournment:

A motion was made by Dollinger and seconded by Plescia to adjourn the meeting at 7:47 p.m.
Motion carried.

Aye: All

Nay: None

Board of Education President
Big Hollow School District #38

Board of Education Secretary
Big Hollow School District #38

	EDUCATION FUND (10)	OPER. & MAINT. FUND (20)	DEBT SVC FUND (30)	TRANS. FUND (40)	SS/MED/IMRF FUND (50/51)	CAPITAL PROJ FUND (60)	WORKING CASH FUND (70)	TORT FUND (80)	TOTAL ALL FUNDS
ASSETS									
Cash & Investments									
Imprest Fund	2,000	0	0	0	0	0	0	0	2,000
Cash in Bank BMO	0	0	0	0	0	0	0	0	0
Cash in Bank Win Trust Land of Lakes Bank	4,448,726	3,189,130	4,268,094	806,687	290,777	551,747	1,208,453	-91,187	14,672,426
PMA Investment	686,897	500,158	316,510	127,255	44,513	121,514	197,571	3,882	1,998,300
PMA Savings Deposit Account	0	0	0	0	0	0	0	0	0
TOTAL CASH & INVESTMENTS	5,137,623	3,689,288	4,584,604	933,942	335,290	673,261	1,406,024	-87,306	16,672,726
Due From Education Fund	0	0	0	0	0	0	0	0	0
TOTAL ASSETS	5,137,623	3,689,288	4,584,604	933,942	335,290	673,261	1,406,024	-87,306	16,672,726
LIABILITIES									
Tax Anticipation Warrants Payable	0	0	0	0	0	0	0	0	0
Accounts Payable	82,193	-29,961	0	-48,888	0	-3,690	0	0	-346
Due To Working Cash Fund	0	0	0	0	0	0	0	0	0
TOTAL LIABILITIES	82,193	-29,961	0	-48,888	0	-3,690	0	0	-346
YTD Revenue	5,045,125	549,344	2,004,171	497,570	196,843	12,479	39,995	67,904	8,413,431
Sale of Assets									0
YTD Expenditures	-4,859,128	-316,485	-72,150	-492,492	-122,825	-213,492	0	-198,891	-6,275,463
YTD Excess/ (Deficiency)	185,997	232,859	1,932,021	5,079	74,019	-201,012	39,995	-130,987	2,137,969
Beginning Fund Balance 07/01/21	5,033,819	3,426,468	2,652,583	879,975	261,272	877,964	1,366,029	43,681	14,541,791
Ending Fund Balance	5,219,816	3,659,326	4,584,604	885,054	335,290	676,951	1,406,024	-87,306	16,679,760
TOTAL LIABILITIES & FUND BAL.	5,137,623	3,689,288	4,584,604	933,942	335,290	673,261	1,406,024	-87,306	16,672,726

Date

Board of Education Secretary

Date

Education Fund						
<u>Revenue</u>	<u>Budget</u>	<u>Month to Date</u>	<u>Year to Date</u>	<u>Budget Balance</u>	<u>% of Budget</u>	
Local Sources	\$9,004,770	\$2,807,581	\$3,557,927	\$5,446,843	40%	
State Sources	\$6,265,323	\$578,174	\$1,153,724	\$5,111,599	18%	
Federal Sources	\$2,076,890	\$64,312	\$330,086	\$1,746,804	16%	
Fees	\$24,000	\$2,762	\$3,388	\$20,612	14%	
Total Revenue	\$17,370,983	\$3,452,828	\$5,045,125	\$12,325,858	29%	
<u>Expenses</u>	<u>Budget</u>	<u>Month to Date</u>	<u>Year to Date</u>	<u>Budget Balance</u>	<u>% of Budget</u>	
Salary	\$12,919,938	\$1,010,702	\$2,832,044	\$10,087,894	22%	
Benefits	\$1,593,085	\$128,272	\$349,288	\$1,243,797	22%	
Purchased Services	\$1,257,059	\$124,329	\$379,959	\$877,100	30%	
Supplies and Mat	\$1,814,238	\$572,680	\$967,537	\$846,701	53%	
Capital Outlay	\$0	\$0	\$0	\$0	0%	
Dues and Fees/Tuition	\$0	\$0	\$0	\$0	0%	
Non-Capital Equipment	\$0	\$0	\$0	\$0	0%	
Other Objects	\$1,155,025	\$110,181	\$330,301	\$0	29%	
Transfers	\$522,500	\$0	\$0	\$522,500	0%	
Total Expenses	\$19,261,845	\$1,946,164	\$4,859,128	\$14,402,717	25%	

Operations and Maintenance						
<u>Revenue</u>	<u>Budget</u>	<u>Month to Date</u>	<u>Year to Date</u>	<u>Budget Balance</u>	<u>% of Budget</u>	
Local Sources	\$1,383,000	\$454,647	\$549,344	\$833,656	40%	
State Sources	\$0	\$0	\$0	\$0	0%	
Federal Sources	\$0	\$0	\$0	\$0	0%	
Other Sources Sale of Land	\$0	\$0	\$0	\$0	0%	
	\$0	\$0	\$0	\$0	0%	
Grant Maintenance	\$0	\$0	\$0	\$0	0%	
Total Revenue	\$1,383,000	\$454,647	\$549,344	\$833,656	40%	
<u>Expenses</u>	<u>Budget</u>	<u>Month to Date</u>	<u>Year to Date</u>	<u>Budget Balance</u>	<u>% of Budget</u>	
Salary	\$375,000	\$26,479	\$78,894	\$296,106	40%	
Benefits	\$30,560	\$2,954	\$8,759	\$21,801	29%	
Purchased Services	\$714,700	\$77,809	\$166,977	\$547,723	23%	
Supplies and Materials	\$484,300	\$27,558	\$61,855	\$422,445	13%	
Capital Outlay	\$0	\$0	\$0	\$0	0%	
Dues, Fees, Tuition	\$0	\$0	\$0	\$0	0%	
Total Expenses	\$1,604,560	\$134,799	\$316,485	\$1,288,075	20%	

Debt Service Fund						
<u>Revenue</u>	<u>Budget</u>	<u>Month to Date</u>	<u>Year to Date</u>	<u>Budget Balance</u>	<u>% of Budget</u>	
Local Sources	\$5,147,305	\$1,658,883	\$2,004,171	\$3,143,134	39%	
State Sources	\$0	\$0	\$0	\$0	0%	
Federal Sources	\$0	\$0	\$0	\$0	0%	
Total Revenue	\$5,147,305	\$1,658,883	\$2,004,171	\$3,143,134	39%	
<u>Expenses</u>	<u>Budget</u>	<u>Month to Date</u>	<u>Year to Date</u>	<u>Budget Balance</u>	<u>% of Budget</u>	
Purchased Services	\$1,000	\$0	\$0	\$1,000	0%	
Principal and Interest	\$0	\$0	\$0	\$0	0%	
Other Objects	\$5,105,651	\$0	\$72,150	\$5,033,501	1%	
Total Expenses	\$5,106,651	\$0	\$72,150	\$5,034,501	1%	

Transportation Fund						
<u>Revenue</u>	<u>Budget</u>	<u>Month to Date</u>	<u>Year to Date</u>	<u>Budget Balance</u>	<u>% of Budget</u>	
Local Sources	\$685,650	\$234,209	\$282,709	\$402,941	41%	
State Sources	\$779,860	\$0	\$214,861	\$564,999	28%	
Federal Sources	\$0	\$0	\$0	\$0	0%	
Total Revenue	\$1,465,510	\$234,209	\$497,570	\$967,940	34%	
<u>Expenses</u>	<u>Budget</u>	<u>Month to Date</u>	<u>Year to Date</u>	<u>Budget Balance</u>	<u>% of Budget</u>	
Salary	\$826,500	\$66,660	\$129,250	\$697,250	16%	
Benefits	\$30,825	\$3,194	\$4,779	\$26,046	16%	
Purchased Services	\$136,600	\$6,475	\$8,152	\$128,448	6%	
Supplies and Mat	\$111,400	\$9,262	\$13,098	\$98,302	12%	
Capital Outlay	\$0	\$0	\$0	\$0	0%	
Other Objects	\$351,200	\$28,867	\$337,213	\$13,987	96%	
Total Expenses	\$1,456,525	\$114,459	\$492,492	\$964,033	34%	

IMRF/SS Fund						
<u>Revenue</u>	<u>Budget</u>	<u>Month to Date</u>	<u>Year to Date</u>	<u>Budget Balance</u>	<u>% of Budget</u>	
Local Sources	\$538,978	\$162,929	\$196,843	\$342,135	37%	
State Sources	\$0	\$0	\$0	\$0	0%	
Federal Sources	\$0	\$0	\$0	\$0	0%	
Total Revenue	\$538,978	\$162,929	\$196,843	\$342,135	37%	
<u>Expenses</u>	<u>Budget</u>	<u>Month to Date</u>	<u>Year to Date</u>	<u>Budget Balance</u>	<u>% of Budget</u>	
Salary	\$0	\$0	\$0	\$0	0%	
Benefits	\$618,500	\$43,890	\$122,825	\$495,675	20%	
Purchased Services	\$0	\$0	\$0	\$0	0%	
Supplies and Mat	\$0	\$0	\$0	\$0	0%	
Capital Outlay	\$0	\$0	\$0	\$0	0%	
Dues and Fees	\$0	\$0	\$0	\$0	0%	
Total Expenses	\$618,500	\$43,890	\$122,825	\$495,675	20%	

Capital Projects						
<u>Revenue</u>	<u>Budget</u>	<u>Month to Date</u>	<u>Year to Date</u>	<u>Budget Balance</u>	<u>% of Budget</u>	
Local Sources	\$100,500	\$6	\$12,479	\$88,021	12%	
State Sources	\$0	\$0	\$0	\$0	0%	
Federal Sources	\$0	\$0	\$0	\$0	0%	
Total Revenue	\$100,500	\$6	\$12,479	\$88,021	12%	
<u>Expenses</u>	<u>Budget</u>	<u>Month to Date</u>	<u>Year to Date</u>	<u>Budget Balance</u>	<u>% of Budget</u>	
Salary	\$0	\$0	\$0	\$0	0%	
Benefits	\$0	\$0	\$0	\$0	0%	
Purchased Services	\$10,000	\$0	\$0	\$10,000	0%	
Supplies and Mat	\$0	\$0	\$0	\$0	0%	
Capital Outlay	\$241,348	\$59,381	\$213,492	\$27,856	88%	
Transfers	\$16,000	\$0	\$0	\$16,000	0%	
Total Expenses	\$267,348	\$59,381	\$213,492	\$53,856	80%	

Working Cash Fund						
<u>Revenue</u>	<u>Budget</u>	<u>Month to Date</u>	<u>Year to Date</u>	<u>Budget Balance</u>	<u>% of Budget</u>	
Local Sources	\$100,000	\$33,077	\$39,995	\$60,005	40%	
State Sources	\$0	\$0	\$0	\$0	0%	
Federal Sources	\$0	\$0	\$0	\$0	0%	
Total Revenue	\$100,000	\$33,077	\$39,995	\$60,005	40%	
<u>Expenses</u>	<u>Budget</u>	<u>Month to Date</u>	<u>Year to Date</u>	<u>Budget Balance</u>	<u>% of Budget</u>	
Salary	\$0	\$0	\$0	\$0	0%	
Benefits	\$0	\$0	\$0	\$0	0%	
Purchased Services	\$0	\$0	\$0	\$0	0%	
Supplies and Mat	\$0	\$0	\$0	\$0	0%	
Capital Outlay	\$0	\$0	\$0	\$0	0%	
Dues and Fees/Tuition	\$0	\$0	\$0	\$0	0%	
Total Expenses	\$0	\$0	\$0	\$0	0%	

Total All Funds						
<u>Revenue</u>	<u>Budget</u>	<u>Month to Date</u>	<u>Year to Date</u>	<u>Budget Balance</u>	<u>% of Budget</u>	
Local Sources	\$17,146,203	\$5,407,539	\$6,711,372	\$10,434,831	39%	
State Sources	\$7,045,183	\$578,174	\$1,368,585	\$5,676,598	19%	
Federal Sources	\$2,076,890	\$64,312	\$330,086	\$1,746,804	16%	
Other Sources Sale of Land	\$0	\$0	\$0	\$0	0%	
Fees	\$24,000	\$2,762	\$3,388	\$20,612	14%	
Maintenance Grant	\$0	\$0	\$0	\$0	0%	
Total Revenue	\$26,292,276	\$6,052,786	\$8,413,431	\$17,878,845	32%	
<u>Expenses</u>	<u>Budget</u>	<u>Month to Date</u>	<u>Year to Date</u>	<u>Budget Balance</u>	<u>% of Budget</u>	
Salary	\$14,121,438	\$1,103,842	\$3,040,188	\$11,081,250	22%	
Benefits	\$2,272,970	\$178,309	\$485,650	\$1,787,320	21%	
Purchased Services	\$2,315,295	\$211,568	\$753,979	\$1,561,316	33%	
Supplies and Mat	\$2,409,938	\$609,500	\$1,042,490	\$1,367,448	43%	
Capital Outlay	\$241,348	\$59,381	\$213,492	\$27,856	88%	
Dues and Fees/Tuition	\$0	\$0	\$0	\$0	0%	
Transfers	\$538,500	\$0	\$0	\$538,500	0%	
Other Objects	\$6,611,876	\$139,048	\$739,664	\$5,872,212	11%	
Total Expenses	\$28,511,365	\$2,301,648	\$6,275,463	\$22,235,902	22%	

**Big Hollow School District #38
Accounts Payable Approval Form for October 12, 2021**

<u>Fund</u>	<u>Fund #</u>	<u>Accounts Payable</u>
Education	10	1,068,047.02
O & M	20	111,808.66
Debt Service	30	
Transportation	40	58,881.90
IMRF/SS	50	43,889.95
Capitol Projects	60	59,380.95
Working Cash	70	
TORT	80	2,955.00
Fire Prev/Safety	90	
Totals		\$1,344,963.48

Board of Education Secretary _____ Date _____
Big Hollow School District #38

Board of Education President _____ Date _____
Big Hollow School District #38

CHECK DATE	CHECK NUMBER	AMOUNT	VENDOR	ACCOUNT DESCRIPTION	ACCOUNT LEVEL DESCRIPTION	TOTAL
09/27/2021	49960	-526.70	Lakeshore Learning C	EDUCATION/District/SPECIAL EDUCATION/SUPPLIES	SPED--- Supp/Mat	
09/27/2021	49960	-961.40	Lakeshore Learning C	EDUCATION/District/SPECIAL EDUCATION/SUPPLIES	SPED--- Supp/Mat	-1,488.10
09/27/2021	50022	-4,090.50	Connection's Academy	EDUCATION/Connection Day SC-Palatine/Spec Ed Private Tuition/Private Tuition	SPED--- Private School Tuition	
09/27/2021	50022	-1,363.50	Connection's Academy	EDUCATION/Connection Day SC-Palatine/Spec Ed Private Tuition/Private Tuition	SPED--- Private School Tuition	-5,454.00
09/27/2021	50099	-688.36	School Life	EDUCATION/PRIMARY/ELEMENTARY/SUPPLIES	Pri-- Supp/Mat	
09/27/2021	50099	-458.90	School Life	EDUCATION/ELEMENTARY/ELEMENTARY/SUPPLIES	Elem-- Supp/Mat	-1,147.26
09/03/2021	50199	25.00	Illinois Dept Of Rev	EDUCATION/District	EDUCATION ILLINOIS TAX	
09/03/2021	50199	19,577.18	Illinois Dept Of Rev	EDUCATION/District	EDUCATION ILLINOIS TAX	
09/03/2021	50199	603.39	Illinois Dept Of Rev	O & M/District	Building- IL State Withholding	
09/03/2021	50199	929.35	Illinois Dept Of Rev	TRANSPORTATION/District	Transportation - IL State Withholding	21,134.92
09/03/2021	50200	3,323.25	Teacher's Health Ins	EDUCATION/District/Employer Deductions	EDUCATION Employee Deductions	
09/03/2021	50200	20.52	Teacher's Health Ins	EDUCATION/District/Employer Deductions	EDUCATION Employee Deductions	
09/03/2021	50200	113.44	Teacher's Health Ins	EDUCATION/District/Employer Deductions	EDUCATION Employee Deductions	
09/03/2021	50200	2,473.99	Teacher's Health Ins	EDUCATION/District/Employer Deductions	EDUCATION Employee Deductions	
09/03/2021	50200	388.14	Teacher's Health Ins	EDUCATION/District/Employer Deductions	EDUCATION Employee Deductions	
09/03/2021	50200	8.23	Teacher's Health Ins	O & M/District/Employee	Building-Insurance Withholding	

CHECK DATE	CHECK NUMBER	AMOUNT	VENDOR	ACCOUNT DESCRIPTION	ACCOUNT LEVEL DESCRIPTION	TOTAL
				Deductions		
09/03/2021	50200	8.24	Teacher's Health Ins	TRANSPORTATION/Distr ict/Employee	Transportation-Insurance With	
				Deductions		
09/03/2021	50200	521.57	Teacher's Health Ins	EDUCATION/District/E mployee Deductions	EDUCATION Employee Deductions	
09/03/2021	50200	11.07	Teacher's Health Ins	O & M/District/Employee	Building-Insurance Withholding	
				Deductions		
09/03/2021	50200	11.07	Teacher's Health Ins	TRANSPORTATION/Distr ict/Employee	Transportation-Insurance With	
				Deductions		
09/03/2021	50200	15.26	Teacher's Health Ins	EDUCATION/District/E mployee Deductions	EDUCATION Employee Deductions	
09/03/2021	50200	84.47	Teacher's Health Ins	EDUCATION/District/E mployee Deductions	EDUCATION Employee Deductions	6,979.25
09/03/2021	50201	33,232.39	Teachers Retirement	EDUCATION/District/E mployee Deductions	EDUCATION Employee Deductions	
09/03/2021	50201	205.20	Teachers Retirement	EDUCATION/District/E mployee Deductions	EDUCATION Employee Deductions	
09/03/2021	50201	1,134.58	Teachers Retirement	EDUCATION/District/E mployee Deductions	EDUCATION Employee Deductions	
09/03/2021	50201	2,141.65	Teachers Retirement	EDUCATION/District/E mployee Deductions	EDUCATION Employee Deductions	
09/03/2021	50201	1,268.97	Teachers Retirement	EDUCATION/District/E mployee Deductions	EDUCATION Employee Deductions	
09/03/2021	50201	5,215.47	Teachers Retirement	EDUCATION/District/E mployee Deductions	EDUCATION Employee Deductions	
09/03/2021	50201	110.67	Teachers Retirement	O & M/District/Employee	Building-Insurance Withholding	
				Deductions		
09/03/2021	50201	110.67	Teachers Retirement	TRANSPORTATION/Distr ict/Employee	Transportation-Insurance With	
				Deductions		
09/03/2021	50201	336.10	Teachers Retirement	EDUCATION/District/E mployee Deductions	EDUCATION Employee Deductions	
09/03/2021	50201	7.13	Teachers Retirement	O & M/District/Employee	Building-Insurance Withholding	
				Deductions		

CHECK DATE	CHECK NUMBER	AMOUNT	VENDOR	ACCOUNT DESCRIPTION	ACCOUNT LEVEL DESCRIPTION	TOTAL
09/03/2021	50201	7.13	Teachers Retirement	TRANSPORTATION/District/Employee Deductions	Transportation-Insurance With	
09/03/2021	50201	171.83	Teachers Retirement	EDUCATION/District/Employee Deductions	EDUCATION Employee Deductions	
09/03/2021	50201	13.24	Teachers Retirement	EDUCATION/District/Employee Deductions	EDUCATION Employee Deductions	
09/03/2021	50201	73.16	Teachers Retirement	EDUCATION/District/Employee Deductions	EDUCATION Employee Deductions	44,028.19
09/03/2021	50202	3,631.39	United States Treasu	EDUCATION/District	EDUCATION FICA	
09/03/2021	50202	755.42	United States Treasu	O & M/District	Building - FICA Withholding	
09/03/2021	50202	1,405.16	United States Treasu	TRANSPORTATION/District		
09/03/2021	50202	1,203.00	United States Treasu	EDUCATION/District/Federal Tax Withheld	EDUCATION FED W/H TAX	
09/03/2021	50202	70.00	United States Treasu	TRANSPORTATION/District/Federal Tax Withheld	Transportation-Federal Withhold	
09/03/2021	50202	50.00	United States Treasu	EDUCATION/District/Federal Tax Withheld	EDUCATION FED W/H TAX	
09/03/2021	50202	38,972.07	United States Treasu	EDUCATION/District/Federal Tax Withheld	EDUCATION FED W/H TAX	
09/03/2021	50202	1,043.41	United States Treasu	O & M/District/Federal Tax Withheld	Building - Federal Withholding	
09/03/2021	50202	888.50	United States Treasu	TRANSPORTATION/District/Federal Tax Withheld	Transportation-Federal Withhold	
09/03/2021	50202	6,966.95	United States Treasu	EDUCATION/District	EDUCATION Medicare Withheld	
09/03/2021	50202	192.89	United States Treasu	O & M/District	Building- Medicare Withholding	
09/03/2021	50202	344.83	United States Treasu	TRANSPORTATION/District	Transportation-Medicare With	
09/03/2021	50202	5,791.97	United States Treasu	SOCIAL SECURITY/MEDICARE/District	SS/Medicare - FICA Withholding	
09/03/2021	50202	7,504.67	United States Treasu	SOCIAL SECURITY/MEDICARE/District	SS/Medicare-Medicare Withheld	68,820.26
09/03/2021	50203	1,007.91	Wisconsin Dept Of Re	EDUCATION/District	EDUCATION WISC ST TAX	

CHECK DATE	CHECK NUMBER	AMOUNT	VENDOR	ACCOUNT DESCRIPTION	ACCOUNT LEVEL DESCRIPTION	TOTAL
09/03/2021	50203	51.50	Wisconsin Dept Of Re	TRANSPORTATION/Distr ict	Transportation -WI State With	1,059.41
09/09/2021	50204	286.50	Abraham's On-Site Sh	EDUCATION/District/F ISCAL SERVICES/PROFESSIONA L AND TECHNICAL SER	Distr--- Shredding Svc	286.50
09/09/2021	50205	345.00	Accurate Biometrics	EDUCATION/District/B OARD OF EDUCATION SERVICES/PROFESSIONA L AND TECHNICAL SER	Board--- Purch Svc	
09/09/2021	50205	57.50	Accurate Biometrics	TRANSPORTATION/Distr ict/PUPIL TRANSPORTATION SERVICES/OTHER PURCHASED SERVICES	Trans--- Fingerprinting	402.50
09/09/2021	50207	964.19	Amazon	EDUCATION/District/S PECIAL EDUCATION/SUPPLIES	SPED--- Supp/Mat	
09/09/2021	50207	29.89	Amazon	EDUCATION/District/R EGULAR PROGRAMS/SUPPLIES	Dist--- Convenience Acct S/M	
09/09/2021	50207	16.45	Amazon	TRANSPORTATION/Distr ict/PUPIL TRANSPORTATION SERVICES/PROFESSIONA L AND TECHNICAL SER	Trans--- Purchase Services	
09/09/2021	50207	-0.68	Amazon	EDUCATION/MIDDLE/MID DLE-JUNIOR HIGH/SUPPLIES	MS-- Supp/Mat	
09/09/2021	50207	114.00	Amazon	TRANSPORTATION/Distr ict/PUPIL TRANSPORTATION SERVICES/PROFESSIONA L AND TECHNICAL SER	Trans--- Purchase Services	
09/09/2021	50207	284.94	Amazon	EDUCATION/MIDDLE/Pri ncipals/SUPPLIES	MS-- Principal Supp/Mat	
09/09/2021	50207	31.96	Amazon	EDUCATION/MIDDLE/MID DLE-JUNIOR HIGH/TEXTBOOKS	MS--- ELA resources	

CHECK DATE	CHECK NUMBER	AMOUNT	VENDOR	ACCOUNT DESCRIPTION	ACCOUNT LEVEL DESCRIPTION	TOTAL
09/09/2021	50207	298.32	Amazon	EDUCATION/District/D ATA PROCESSING SERVICES/SUPPLIES	Tech--- Supp/Mat	
09/09/2021	50207	78.93	Amazon	EDUCATION/District/R EGULAR PROGRAMS/SUPPLIES	Dist--- Convenience Acct S/M	
09/09/2021	50207	301.88	Amazon	EDUCATION/ELEMENTARY /ELEMENTARY/SUPPLIES	Elem-- Supp/Mat	
09/09/2021	50207	77.92	Amazon	EDUCATION/ELEMENTARY /ELEMENTARY/SUPPLIES	Elem-- Supp/Mat	
09/09/2021	50207	87.85	Amazon	EDUCATION/District/R EGULAR PROGRAMS/SUPPLIES	Dist--- Convenience Acct S/M	
09/09/2021	50207	232.40	Amazon	EDUCATION/MIDDLE/MID DLE-JUNIOR HIGH/SUPPLIES	MS-- Supp/Mat	
09/09/2021	50207	179.42	Amazon	EDUCATION/MIDDLE/MID DLE-JUNIOR HIGH/SUPPLIES		
09/09/2021	50207	53.96	Amazon	EDUCATION/ELEMENTARY /ELEMENTARY/SUPPLIES	Elem-- Supp/Mat	
09/09/2021	50207	24.38	Amazon	EDUCATION/District/S PECIAL EDUCATION/SUPPLIES	SPED--- Supp/Mat	
09/09/2021	50207	100.14	Amazon	EDUCATION/ELEMENTARY /ELEMENTARY/SUPPLIES	Elem-- Supp/Mat	
09/09/2021	50207	93.76	Amazon	EDUCATION/ELEMENTARY /ELEMENTARY/SUPPLIES	Elem-- Supp/Mat	
09/09/2021	50207	36.01	Amazon	EDUCATION/ELEMENTARY /ELEMENTARY/SUPPLIES	Elem-- Supp/Mat	
09/09/2021	50207	167.99	Amazon	EDUCATION/PRIMARY/EL EMENTARY/SUPPLIES	Pri-- Kindergarten Sup/Mat	
09/09/2021	50207	755.46	Amazon	EDUCATION/District/R EGULAR PROGRAMS/SUPPLIES	Dist--- Convenience Acct S/M	
09/09/2021	50207	134.87	Amazon	EDUCATION/District/S PECIAL EDUCATION/SUPPLIES	SPED--- Supp/Mat	
09/09/2021	50207	55.93	Amazon	EDUCATION/MIDDLE/MID	MS--- ELA resources	

CHECK DATE	CHECK NUMBER	AMOUNT	VENDOR	ACCOUNT DESCRIPTION	ACCOUNT LEVEL DESCRIPTION	TOTAL
09/09/2021	50207	10.99	Amazon	DLE-JUNIOR HIGH/TEXTBOOKS EDUCATION/ELEMENTARY	Elem-- Supp/Mat	
09/09/2021	50207	83.00	Amazon	/ELEMENTARY/SUPPLIES EDUCATION/ELEMENTARY	Elem-- Supp/Mat	
09/09/2021	50207	29.40	Amazon	/ELEMENTARY/SUPPLIES EDUCATION/MIDDLE/MID	MS-- Supp/Mat	4,243.36
09/09/2021	50208	2,450.00	Antioch School Distr	DLE-JUNIOR HIGH/SUPPLIES EDUCATION/MIDDLE/Int	Conference--- Dues & Fees	2,450.00
09/09/2021	50209	50.00	Arndt, Christine	erscholastic Programs/DUES & FEES EDUCATION/District/E	Admin cell phone stipend	50.00
09/09/2021	50210	50.00	Biancalana, Venette	XECUTIVE ADMINISTRATION SERVI/Other Benefit EDUCATION/District/E	Admin cell phone stipend	50.00
09/09/2021	50211	1,750.00	Byrnes & Walsh, LLC	XECUTIVE ADMINISTRATION SERVI/Other Benefit EDUCATION/District/B	Board-- Legal Services	1,750.00
09/09/2021	50212	2,556.25	Carroll, Megan	BOARD OF EDUCATION SERVICES/LEGAL SERVICES EDUCATION/District/H	SPED-- OT/PT/Health Pur Svc	2,556.25
09/09/2021	50213	2,955.00	CLIC	EALTH SERVICES/PROFESSIONA L AND TECHNICAL SER TORT	CLIC Property Insurance	2,955.00
09/09/2021	50214	3,624.27	Connection's Day Sch	FUND/District/Proper ty Insurance/CLIC Property Insurance EDUCATION/Connection	SPED--- Private School Tuition	3,624.27
				Day SC-Palatine/Spec Ed Private Tuition/Private Tuition		

CHECK DATE	CHECK NUMBER	AMOUNT	VENDOR	ACCOUNT DESCRIPTION	ACCOUNT LEVEL DESCRIPTION	TOTAL
09/09/2021	50215	3,545.10	Connection's Academy	EDUCATION/Connection Day SC-Palatine/Spec Ed Private Tuition/Private Tuition	SPED--- Private School Tuition	
09/09/2021	50215	3,545.10	Connection's Academy	EDUCATION/Connection Day SC-Palatine/Spec Ed Private Tuition/Private Tuition	SPED--- Private School Tuition	7,090.20
09/09/2021	50216	696.20	CustomInk	TRANSPORTATION/District/PUPIL TRANSPORTATION SERVICES/PROFESSIONAL AND TECHNICAL SERVICES	Trans--- Purchase Services	
09/09/2021	50216	276.64	CustomInk	EDUCATION/District/FOOD SERVICES/PROFESSIONAL AND TECHNICAL SERVICES	FoodSvc-- Purch Svc	972.84
09/09/2021	50217	27.60	Daily Herald/Paddock	EDUCATION/District/BOARD OF EDUCATION SERVICES/COMMUNICATION	Board-- Communication	27.60
09/09/2021	50218	805.10	Data Recognition Cor	EDUCATION/District/G RANTS/DUES & FEES	ESSERIII-- LAS links license	805.10
09/09/2021	50219	50.00	DeNovo, Kira	EDUCATION/District/EXECUTIVE ADMINISTRATION SERVI/Other Benefit	Admin cell phone stipend	50.00
09/09/2021	50220	274.26	DiMaggio, Nicole	EDUCATION/PRIMARY/ELEMENTARY/SUPPLIES	Pri-- Supp/Mat	274.26
09/09/2021	50221	279.60	Discount School Supp	EDUCATION/District/SPECIAL ED PROGRAMS PRE-K/SUPPLIES	SPED--- PreK Supp/Mat	
09/09/2021	50221	1,123.67	Discount School Supp	EDUCATION/District/SPECIAL ED PROGRAMS PRE-K/SUPPLIES	SPED--- PreK Supp/Mat	1,403.27

CHECK DATE	CHECK NUMBER	AMOUNT	VENDOR	ACCOUNT DESCRIPTION	ACCOUNT LEVEL DESCRIPTION	TOTAL
09/09/2021	50222	14,371.00	Emeric Facility Serv	O & M/District/CARE AND UPKEEP OF BUILDING SE/CLEANING SERVICES	Cleaning Service	14,371.00
09/09/2021	50223	547.50	Erickson, Douglas	EDUCATION/District/ELEMENTARY/TUITION REIMBURSEMENT	Distr-- Tuition Reimb.	547.50
09/09/2021	50224	4,320.00	Fox Lake School Dist	EDUCATION/District/IMPROVEMENT OF INSTRUCTION SER/PROFESSIONAL AND TECHNICAL SER	Impr. of Instr--- Staff	4,320.00
09/09/2021	50225	395.00	FSS Technologies, LL	O & M/ELEMENTARY/CARE AND UPKEEP OF BUILDING SE/REPAIR AND MAINTENANCE SERVICE	Elem--- O&M Repairs and Maint	395.00
09/09/2021	50226	142,387.47	GHA Technologies Inc	EDUCATION/District/G RANTS/SUPPLIES	**ESSER3-- Sound syst	
09/09/2021	50226	20,948.87	GHA Technologies Inc	EDUCATION/District/OPERATIONS SERVICES/PROFESSIONAL AND TECHNICAL SER	Tech--- Web Filter (Palo Alto)	163,336.34
09/09/2021	50227	8.96	Gold, Robert	EDUCATION/District/OFFICE OF THE SUPERINTENDENT S/TRAVEL	Supt---Travel	
09/09/2021	50227	255.36	Gold, Robert	EDUCATION/District/OFFICE OF THE SUPERINTENDENT S/TRAVEL	Supt---Travel	
09/09/2021	50227	255.36	Gold, Robert	EDUCATION/District/OFFICE OF THE SUPERINTENDENT S/TRAVEL	Supt---Travel	
09/09/2021	50227	15.80	Gold, Robert	EDUCATION/District/OFFICE OF THE SUPERINTENDENT S/TRAVEL	Supt---Travel	

CHECK DATE	CHECK NUMBER	AMOUNT	VENDOR	ACCOUNT DESCRIPTION	ACCOUNT LEVEL DESCRIPTION	TOTAL
09/09/2021	50227	50.00	Gold, Robert	SUPERINTENDENT S/TRAVEL EDUCATION/District/E EXECUTIVE	Admin cell phone stipend	585.48
09/09/2021	50228	3,556.84	Grant Township Highw	ADMINISTRATION SERVI/Other Benefit TRANSPORTATION/Distr ict/PUPIL	Trans--- Fuel	3,556.84
09/09/2021	50229	2,286.80	Growing Leaders Inc	TRANSPORTATION SERVICES/GASOLINE EDUCATION/District/I MPROVEMENT OF INSTRUCTION	Impr. of Instr--- Staff	2,286.80
09/09/2021	50230	50.00	Hetrovicz, Michelle	SER/PROFESSIONAL AND TECHNICAL SER EDUCATION/District/E EXECUTIVE	Admin cell phone stipend	50.00
09/09/2021	50231	3,150.32	Hodges, Loizzi, Eise	ADMINISTRATION SERVI/Other Benefit EDUCATION/District/B OARD OF EDUCATION SERVICES/LEGAL SERVICES	Board-- Legal Services	3,150.32
09/09/2021	50232	2,647.00	IFSI	O & M/District/OPERATION AND MAINTENANCE OF P/PROFESSIONAL AND TECHNICAL SER	Dist--- Fire Insp. Services	
09/09/2021	50232	120.00	IFSI	TRANSPORTATION/Distr ict/PUPIL TRANSPORTATION SERVICES/PROFESSIONA L AND TECHNICAL SER	Trans--- Purchase Services	
09/09/2021	50232	3,178.00	IFSI	O & M/District/OPERATION AND MAINTENANCE OF P/PROFESSIONAL AND TECHNICAL SER	Dist--- Fire Insp. Services	5,945.00
09/09/2021	50233	1,302.00	Illinois MTSS Networ	EDUCATION/District/I IDEA-- Impr of Inst		1,302.00

CHECK DATE	CHECK NUMBER	AMOUNT	VENDOR	ACCOUNT DESCRIPTION	ACCOUNT LEVEL DESCRIPTION	TOTAL
09/09/2021	50234	219,600.00	Imagine Learning, In	MPROVEMENT OF INSTRUCTION SER/PROFESSIONAL AND TECHNICAL SER EDUCATION/District/G	ESSERIII-- Imagine Learning RANTS/SOFTWARE	219,600.00
09/09/2021	50235	844.80	Integrated Systems C	EDUCATION/District/O PERATIONS SERVICES/PROFESSIONA	Tech--- Purch Svc	844.80
09/09/2021	50236	299.00	IPA Lake Region	L AND TECHNICAL SER EDUCATION/District/I	Impr. of Instr--- Admin	299.00
09/09/2021	50237	50.00	Janusz, Lenayn	MPROVEMENT OF INSTRUCTION SER/PROFESSIONAL AND TECHNICAL SER	Admin cell phone stipend	50.00
09/09/2021	50238	110.00	K & M Printing	XECUTIVE ADMINISTRATION SERVI/Other Benefit	Elem-- Supp/Mat	110.00
09/09/2021	50239	50.00	King, Victorene Lee	EDUCATION/ELEMENTARY /ELEMENTARY/SUPPLIES	Admin cell phone stipend	50.00
09/09/2021	50240	140.37	Klobe, Deonna Bryn	EDUCATION/District/E XECUTIVE ADMINISTRATION SERVI/Other Benefit	Athletics--- Supp/Mat	140.37
09/09/2021	50241	1,047.00	Manullang, Korinne	EDUCATION/MIDDLE/Int erscholastic Programs/SUPPLIES	Distr-- Tuition Reimb.	1,047.00
09/09/2021	50242	3,018.71	Martin-Upton, Eileen	EDUCATION/District/E REIMBURSEMENT	SPED-- OT/PT/Health Pur Svc	
09/09/2021	50242	2,556.25	Martin-Upton, Eileen	EALTH SERVICES/PROFESSIONA L AND TECHNICAL SER	SPED-- OT/PT/Health Pur Svc	5,574.96

<u>CHECK DATE</u>	<u>CHECK NUMBER</u>	<u>AMOUNT</u>	<u>VENDOR</u>	<u>ACCOUNT DESCRIPTION</u>	<u>ACCOUNT LEVEL DESCRIPTION</u>	<u>TOTAL</u>
09/09/2021	50243	50.00	McCulley, Matthew	EDUCATION/District/E XECUTIVE ADMINISTRATION	Admin cell phone stipend	50.00
09/09/2021	50244	278.00	McGill Materials	SERVI/Other Benefit O & M/District/CARE AND UPKEEP OF GROUNDS	Dist--- Grounds Supp/Mat	278.00
09/09/2021	50245	50.00	Meek, Stephanie	SER/SUPPLIES EDUCATION/District/E XECUTIVE ADMINISTRATION	Admin cell phone stipend	50.00
09/09/2021	50246	769.00	Menards	SERVI/Other Benefit EDUCATION/District/S PECIAL EDUCATION/SUPPLIES	SPED--- Supp/Mat	
09/09/2021	50246	11.94	Menards	EDUCATION/District/D ATA PROCESSING SERVICES/SUPPLIES	Tech--- Supp/Mat	
09/09/2021	50246	29.15	Menards	O & M/MIDDLE/CARE AND UPKEEP OF BUILDING SE/SUPPLIES	MS--- Maintenance Supp/Mat	
09/09/2021	50246	41.45	Menards	O & M/PRIMARY/CARE AND UPKEEP OF BUILDING SE/SUPPLIES	Pri--- Maintenance Supp/Mat	
09/09/2021	50246	2.27	Menards	O & M/District/CARE AND UPKEEP OF GROUNDS SER/SUPPLIES	Dist--- Grounds Supp/Mat	
09/09/2021	50246	48.06	Menards	O & M/District/CARE AND UPKEEP OF BUILDING SE/SUPPLIES	Dist--- Maintenance Supp/Mat	
09/09/2021	50246	24.95	Menards	O & M/MIDDLE/CARE AND UPKEEP OF BUILDING SE/SUPPLIES	MS--- Maintenance Supp/Mat	
09/09/2021	50246	31.54	Menards	O &	Elem--- Maintenance Supp/Mat	

CHECK DATE	CHECK NUMBER	AMOUNT	VENDOR	ACCOUNT DESCRIPTION	ACCOUNT LEVEL DESCRIPTION	TOTAL
09/09/2021	50246	37.95	Menards	M/ELEMENTARY/CARE AND UPKEEP OF BUILDING SE/SUPPLIES	Dist--- Maintenance Supp/Mat	
09/09/2021	50246	44.26	Menards	O & M/District/CARE AND UPKEEP OF BUILDING SE/SUPPLIES	Dist--- Maintenance Supp/Mat	
09/09/2021	50246	10.44	Menards	O & M/PRIMARY/CARE AND UPKEEP OF BUILDING SE/SUPPLIES	Pri--- Maintenance Supp/Mat	
09/09/2021	50246	4.19	Menards	O & M/PRIMARY/CARE AND UPKEEP OF BUILDING SE/SUPPLIES	Pri--- Maintenance Supp/Mat	
09/09/2021	50246	72.22	Menards	O & M/MIDDLE/CARE AND UPKEEP OF BUILDING SE/SUPPLIES	MS--- Maintenance Supp/Mat	
09/09/2021	50246	27.55	Menards	EDUCATION/District/D ATA PROCESSING SERVICES/SUPPLIES	Tech--- Supp/Mat	
09/09/2021	50246	27.78	Menards	EDUCATION/District/D ATA PROCESSING SERVICES/SUPPLIES	Tech--- Supp/Mat	1,182.75
09/09/2021	50247	1,216.40	Midland Paper	EDUCATION/PRIMARY/EL EMENTARY/Copy Paper	Pri-- Copy paper	
09/09/2021	50247	1,216.40	Midland Paper	EDUCATION/PRIMARY/EL EMENTARY/Copy Paper	Pri-- Copy paper	2,432.80
09/09/2021	50248	12,279.00	Midwest Transit Equi	TRANSPORTATION/Distr ict/PUPIL TRANSPORTATION SERVICES/REDEMPTION OF PRINCIPAL	Bus Lease--Principal	12,279.00

CHECK DATE	CHECK NUMBER	AMOUNT	VENDOR	ACCOUNT DESCRIPTION	ACCOUNT LEVEL DESCRIPTION	TOTAL
09/09/2021	50249	50.00	Morley, Sunny	EDUCATION/District/E XECUTIVE ADMINISTRATION SERVI/Other Benefit	Admin cell phone stipend	50.00
09/09/2021	50250	50.00	Mullen, Rachel Ann	EDUCATION/District/E XECUTIVE ADMINISTRATION SERVI/Other Benefit	Admin cell phone stipend	50.00
09/09/2021	50251	100.35	Napa Auto Supply Fox	TRANSPORTATION/Distr ict/PUPIL TRANSPORTATION SERVICES/SUPPLIES	Trans--- Supp/Mat	100.35
09/09/2021	50252	836.93	NCC - Peterson Produ	O & M/MIDDLE/CARE AND UPKEEP OF BUILDING SE/SUPPLIES	MS--- Custodial Supp/Mat	
09/09/2021	50252	812.30	NCC - Peterson Produ	O & M/ELEMENTARY/CARE AND UPKEEP OF BUILDING SE/SUPPLIES	Elem--- Custodial Supp/Mat	
09/09/2021	50252	984.44	NCC - Peterson Produ	O & M/PRIMARY/CARE AND UPKEEP OF BUILDING SE/SUPPLIES	Pri--- Custodial Supp/Mat	2,633.67
09/09/2021	50253	3,338.77	OneTouchPoint Southw	EDUCATION/MIDDLE/MID DLE-JUNIOR HIGH/SUPPLIES	MS--- Agendas/Planners	3,338.77
09/09/2021	50254	790.00	PAHCS II/Northwester	TRANSPORTATION/Distr ict/PUPIL TRANSPORTATION SERVICES/OTHER PURCHASED SERVICES	Trans--- Bus Driver Physicals	
09/09/2021	50254	80.00	PAHCS II/Northwester	TRANSPORTATION/Distr ict/PUPIL TRANSPORTATION SERVICES/OTHER PURCHASED SERVICES	Trans--- Bus Driver Physicals	870.00
09/09/2021	50255	50.00	Pittman, Erin	EDUCATION/District/E	Admin cell phone stipend	50.00

CHECK DATE	CHECK NUMBER	AMOUNT	VENDOR	ACCOUNT DESCRIPTION	ACCOUNT LEVEL DESCRIPTION	TOTAL
				EXECUTIVE ADMINISTRATION SERVI/Other Benefit		
09/09/2021	50256	465.00	Provo, Jeanette	EDUCATION/District/E	Distr-- Tuition Reimb.	465.00
				LEMENTARY/TUITION REIMBURSEMENT		
09/09/2021	50257	1,049.43	Quadient Finance USA	EDUCATION/District/B	Board-- Communication	1,049.43
				BOARD OF EDUCATION SERVICES/COMMUNICATI ON		
09/09/2021	50258	386.00	RAILS	EDUCATION/MIDDLE/EDU	MS--- Library Books	386.00
				CATIONAL MEDIA SERVICES/SUPPLIES		
09/09/2021	50259	50.00	Raney Day Services	EDUCATION/District/D	Tech--- Suppt Svc (Raney)	50.00
				ATA PROCESSING SERVICES/OTHER PURCHASED SERVICES		
09/09/2021	50260	792.50	Ray Chevrolet	TRANSPORTATION/Distr	Trans--- Rep/Maintenance	792.50
				ict/PUPIL TRANSPORTATION SERVICES/REPAIR AND MAINTENANCE SERVICE		
09/09/2021	50261	26,970.00	Riverside Technologi	EDUCATION/District/D	Tech-- Laptop bags	26,970.00
				ATA PROCESSING SERVICES/SUPPLIES		
09/09/2021	50262	1,420.75	Riverside Insights	EDUCATION/District/G	General State Aid	1,420.75
				eneral State Aid		
09/09/2021	50263	148.50	Rochester 100 Inc	EDUCATION/District/S	SPED--- Supp/Mat	148.50
				PECIAL EDUCATION/SUPPLIES		
09/09/2021	50264	395.96	Romero, Lisa	EDUCATION/MIDDLE/MID	MS-- Supp/Mat	395.96
				DLE-JUNIOR HIGH/SUPPLIES		
09/09/2021	50265	0.00	Salazar, Kristin	EDUCATION/District/C	EDUCATION CASH ON HAND GENERAL	
				ASH IN BANK		
09/09/2021	50265	100.00	Salazar, Kristin	EDUCATION/District/R	Dist--- Convenience Acct S/M	100.00
				EGULAR PROGRAMS/SUPPLIES		
09/09/2021	50266	16,588.00	Santander Leasing LL	TRANSPORTATION/Distr	Bus Lease--Principal	16,588.00

CHECK DATE	CHECK NUMBER	AMOUNT	VENDOR	ACCOUNT DESCRIPTION	ACCOUNT LEVEL DESCRIPTION	TOTAL
09/09/2021	50267	29,884.35	SEDOL	ict/PUPIL TRANSPORTATION SERVICES/REDEMPTION OF PRINCIPAL EDUCATION/SEDOL/Spec	SPED--- SEDOL Tuition	29,884.35
09/09/2021	50268	50.00	Sheriff's Office	ED/TuitionOtherDistri cts/Private Tuition	Dist--- O&M Pur Svc	50.00
09/09/2021	50269	559.95	Simha Trading Inc	O & M/District/OPERATION AND MAINTENANCE OF P/PROFESSIONAL AND TECHNICAL SER	Tech--- Purch Svc	
09/09/2021	50269	479.96	Simha Trading Inc	EDUCATION/District/O PERATIONS SERVICES/PROFESSIONA L AND TECHNICAL SER	Tech--- Purch Svc	
09/09/2021	50269	839.93	Simha Trading Inc	EDUCATION/District/O PERATIONS SERVICES/PROFESSIONA L AND TECHNICAL SER	Tech--- Purch Svc	1,879.84
09/09/2021	50270	6,877.52	Spectrum Center Inc	EDUCATION/Connection Day SC-Palatine/Spec Ed Private Tuition/Private Tuition	SPED--- Private School Tuition	6,877.52
09/09/2021	50271	1,125.00	Strand, Melissa Lynn	EDUCATION/District/H EALTH SERVICES/PROFESSIONA L AND TECHNICAL SER	SPED-- OT/PT/Health Pur Svc	1,125.00
09/09/2021	50272	1,200.00	Stump, Alison	EDUCATION/District/E LEMENTARY/TUITION REIMBURSEMENT	Distr-- Tuition Reimb.	1,200.00
09/09/2021	50273	404.85	SumBlox Group, LLC	EDUCATION/District/S PECIAL	SPED--- Supp/Mat	404.85

CHECK DATE	CHECK NUMBER	AMOUNT	VENDOR	ACCOUNT DESCRIPTION	ACCOUNT LEVEL DESCRIPTION	TOTAL
09/09/2021	50274	1,896.50	Summers, Brian	EDUCATION/SUPPLIES EDUCATION/District/E LEMENTARY/TUITION REIMBURSEMENT	Distr-- Tuition Reimb.	1,896.50
09/09/2021	50275	50.00	Swiderski, Derek	TRANSPORTATION/Distr ict/SERVICE AREA DIRECTION/Other Benefit	Trans-- cell phone stipend	50.00
09/09/2021	50276	2,140.00	Teaching Strategies	EDUCATION/District/S PECIAL EDUCATION/SOFTWARE	SPED--- Software (Gold Assmnt)	2,140.00
09/09/2021	50277	385.50	Techstar America Cor	EDUCATION/District/C ARE AND UPKEEP OF EQUIPMENT S/RENTALS	Dist-- Copy Machine Lease	
09/09/2021	50277	114.00	Techstar America Cor	EDUCATION/MIDDLE/MID DLE-JUNIOR HIGH/Copy Supplies	MS-- Copy Supplies	
09/09/2021	50277	95.00	Techstar America Cor	EDUCATION/District/C ARE AND UPKEEP OF EQUIPMENT S/RENTALS	Dist-- Copy Machine Lease	
09/09/2021	50277	203.88	Techstar America Cor	EDUCATION/ELEMENTARY /ELEMENTARY/Copy Supplies	Elem-- Copy Supplies	798.38
09/09/2021	50278	450.00	The Math Learning Ce	EDUCATION/District/I MPROVEMENT OF INSTRUCTION SER/PROFESSIONAL AND TECHNICAL SER	ESSER2- PD Bridges Math	450.00
09/09/2021	50279	1,380.00	University Of Oregon	EDUCATION/District/D ATA PROCESSING SERVICES/DUES & FEES	Tech--- SWISS Annual Fee	1,380.00
09/09/2021	50280	3,000.00	Upland Construction	CAPITAL PROJECTS/District/FA CILITIES ACQUISITION AND CON/IMPROVEMENTS OTHER THAN BUILDI	Parking Lot/Concrete Impr.	
09/09/2021	50280	375.00	Upland Construction	CAPITAL	Parking Lot/Concrete Impr.	3,375.00

CHECK DATE	CHECK NUMBER	AMOUNT	VENDOR	ACCOUNT DESCRIPTION	ACCOUNT LEVEL DESCRIPTION	TOTAL
				PROJECTS/District/FA CILITIES ACQUISITION AND CON/IMPROVEMENTS OTHER THAN BUILDI		
09/09/2021	50281	83.83	Waukegan Safe And Lo	O & M/PRIMARY/CARE AND UPKEEP OF BUILDING SE/REPAIR AND MAINTENANCE SERVICE	Pri--- O&M Repair & Maint	
09/09/2021	50281	34.59	Waukegan Safe And Lo	O & M/MIDDLE/CARE AND UPKEEP OF BUILDING SE/REPAIR AND MAINTENANCE SERVICE	MS--- O&M Repairs and Maint	118.42
09/16/2021	50283	480.06	Biancalana, Venette	EDUCATION/PRIMARY/EL EMENTARY/SUPPLIES	Pri-- Supp/Mat	
09/16/2021	50283	480.06	Biancalana, Venette	EDUCATION/ELEMENTARY /ELEMENTARY/SUPPLIES	Elem-- Supp/Mat	
09/16/2021	50283	1,200.00	Biancalana, Venette	EDUCATION/District/E LEMENTARY/TUITION REIMBURSEMENT	Distr-- Tuition Reimb.	
09/16/2021	50283	43.48	Biancalana, Venette	EDUCATION/ELEMENTARY /ELEMENTARY/SUPPLIES	Elem-- Supp/Mat	2,203.60
09/16/2021	50284	100.00	Boone, Lisa	EDUCATION/PRIMARY/EL EMENTARY/SUPPLIES	Pri-- Supp/Mat	100.00
09/16/2021	50285	1,200.00	Coletto, Jessica	EDUCATION/District/E LEMENTARY/TUITION REIMBURSEMENT	Distr-- Tuition Reimb.	1,200.00
09/16/2021	50286	100.00	Frank, Sarah Marie	EDUCATION/MIDDLE/MID DLE-JUNIOR HIGH/SUPPLIES	MS-- Supp/Mat	100.00
09/16/2021	50287	100.00	Hagen, Christina	EDUCATION/MIDDLE/MID DLE-JUNIOR HIGH/SUPPLIES	MS-- Supp/Mat	100.00
09/16/2021	50288	1,200.00	Lancaster, Kristina	EDUCATION/District/E LEMENTARY/TUITION REIMBURSEMENT	Distr-- Tuition Reimb.	1,200.00
09/16/2021	50289	42.00	Philippsen, Michelle	EDUCATION/District/O	FoodSvc--- Travel	42.00

CHECK DATE	CHECK NUMBER	AMOUNT	VENDOR	ACCOUNT DESCRIPTION	ACCOUNT LEVEL DESCRIPTION	TOTAL
				OTHER FOOD SERVICES/TRAVEL		
09/16/2021	50290	475.00	Provo, Jeanette	EDUCATION/District/ELEMENTARY/TUITION REIMBURSEMENT	Distr-- Tuition Reimb.	475.00
09/16/2021	50293	5.95	Schiller, Kathryn	EDUCATION/ELEMENTARY/ELEMENTARY/SUPPLIES	Elem--- Music Supp/Mat	
09/16/2021	50293	62.64	Schiller, Kathryn	EDUCATION/ELEMENTARY/ELEMENTARY/SUPPLIES	Elem--- Music Supp/Mat	
09/16/2021	50293	30.00	Schiller, Kathryn	EDUCATION/ELEMENTARY/ELEMENTARY/SUPPLIES	Elem--- Music Supp/Mat	
09/16/2021	50293	4.00	Schiller, Kathryn	EDUCATION/ELEMENTARY/ELEMENTARY/SUPPLIES	Elem--- Music Supp/Mat	
09/16/2021	50293	12.72	Schiller, Kathryn	EDUCATION/ELEMENTARY/ELEMENTARY/SUPPLIES	Elem--- Music Supp/Mat	
09/16/2021	50293	21.30	Schiller, Kathryn	EDUCATION/ELEMENTARY/ELEMENTARY/SUPPLIES	Elem--- Music Supp/Mat	
09/16/2021	50293	5.99	Schiller, Kathryn	EDUCATION/ELEMENTARY/ELEMENTARY/SUPPLIES	Elem--- Music Supp/Mat	
09/16/2021	50293	5.98	Schiller, Kathryn	EDUCATION/ELEMENTARY/ELEMENTARY/SUPPLIES	Elem--- Music Supp/Mat	
09/16/2021	50293	49.90	Schiller, Kathryn	EDUCATION/ELEMENTARY/ELEMENTARY/SUPPLIES	Elem-- Supp/Mat	
09/16/2021	50293	69.86	Schiller, Kathryn	EDUCATION/ELEMENTARY/ELEMENTARY/SUPPLIES	Elem-- Supp/Mat	
09/16/2021	50293	193.05	Schiller, Kathryn	EDUCATION/ELEMENTARY/ELEMENTARY/SUPPLIES	Elem-- Supp/Mat	
09/16/2021	50293	40.03	Schiller, Kathryn	EDUCATION/ELEMENTARY/ELEMENTARY/SUPPLIES	Elem-- Supp/Mat	
09/16/2021	50293	45.90	Schiller, Kathryn	EDUCATION/ELEMENTARY/ELEMENTARY/SUPPLIES	Elem--- Music Supp/Mat	
09/16/2021	50293	19.98	Schiller, Kathryn	EDUCATION/ELEMENTARY/ELEMENTARY/SUPPLIES	Elem--- Music Supp/Mat	
09/16/2021	50293	12.34	Schiller, Kathryn	EDUCATION/ELEMENTARY/ELEMENTARY/SUPPLIES	Elem--- Music Supp/Mat	
09/16/2021	50293	7.95	Schiller, Kathryn	EDUCATION/ELEMENTARY/ELEMENTARY/SUPPLIES	Elem--- Music Supp/Mat	
09/16/2021	50293	13.83	Schiller, Kathryn	EDUCATION/ELEMENTARY/ELEMENTARY/SUPPLIES	Elem--- Music Supp/Mat	

CHECK DATE	CHECK NUMBER	AMOUNT	VENDOR	ACCOUNT DESCRIPTION	ACCOUNT LEVEL DESCRIPTION	TOTAL
09/16/2021	50293	12.00	Schiller, Kathryn	EDUCATION/ELEMENTARY /ELEMENTARY/SUPPLIES	Elem--- Music Supp/Mat	
09/16/2021	50293	12.49	Schiller, Kathryn	EDUCATION/ELEMENTARY /ELEMENTARY/SUPPLIES	Elem--- Music Supp/Mat	
09/16/2021	50293	3.50	Schiller, Kathryn	EDUCATION/ELEMENTARY /ELEMENTARY/SUPPLIES	Elem--- Music Supp/Mat	
09/16/2021	50293	4.00	Schiller, Kathryn	EDUCATION/ELEMENTARY /ELEMENTARY/SUPPLIES	Elem--- Music Supp/Mat	
09/16/2021	50293	29.95	Schiller, Kathryn	EDUCATION/ELEMENTARY /ELEMENTARY/SUPPLIES	Elem--- Music Supp/Mat	
09/16/2021	50293	29.98	Schiller, Kathryn	EDUCATION/ELEMENTARY /ELEMENTARY/SUPPLIES	Elem--- Music Supp/Mat	
09/16/2021	50293	15.99	Schiller, Kathryn	EDUCATION/ELEMENTARY /ELEMENTARY/SUPPLIES	Elem--- Music Supp/Mat	
09/16/2021	50293	20.69	Schiller, Kathryn	EDUCATION/ELEMENTARY /ELEMENTARY/SUPPLIES	Elem--- Music Supp/Mat	
09/16/2021	50293	124.72	Schiller, Kathryn	EDUCATION/ELEMENTARY /ELEMENTARY/SUPPLIES	Elem-- Supp/Mat	
09/16/2021	50293	2.00	Schiller, Kathryn	EDUCATION/ELEMENTARY /ELEMENTARY/SUPPLIES	Elem--- Music Supp/Mat	
09/16/2021	50293	9.98	Schiller, Kathryn	EDUCATION/ELEMENTARY /ELEMENTARY/SUPPLIES	Elem--- Music Supp/Mat	866.72
09/16/2021	50294	413.19	Swiderski, Lisa Mari	EDUCATION/MIDDLE/MID DLE-JUNIOR HIGH/SUPPLIES	MS-- Supp/Mat	413.19
09/16/2021	50295	299.44	Wahls, Anne	EDUCATION/MIDDLE/MID DLE-JUNIOR HIGH/Workbooks	MS--- Spanish Workbooks	299.44
09/16/2021	50296	213.46	Zeiger, Elyse	EDUCATION/PRIMARY/EL EMENTARY/SUPPLIES	Pri-- Supp/Mat	213.46
09/17/2021	50297	2,605.90	Ill Municipal Retire	EDUCATION/District/B enefit Accrual	EDUCATION IMRF Deduction	
09/17/2021	50297	558.91	Ill Municipal Retire	O & M/District/Benefit Accrual	Building - IMRF Withholding	
09/17/2021	50297	1,038.85	Ill Municipal Retire	TRANSPORTATION/Distr ict/Benefit Accrual		
09/17/2021	50297	6,623.07	Ill Municipal Retire	IMRF/District/Benefi t Accrual	IMRF - IMRF Withholding	

CHECK DATE	CHECK NUMBER	AMOUNT	VENDOR	ACCOUNT DESCRIPTION	ACCOUNT LEVEL DESCRIPTION	TOTAL
09/17/2021	50297	2,986.31	Ill Municipal Retire	EDUCATION/District/Benefit Accrual	EDUCATION IMRF Deduction	
09/17/2021	50297	531.96	Ill Municipal Retire	O & M/District/Benefit Accrual	Building - IMRF Withholding	
09/17/2021	50297	1,856.93	Ill Municipal Retire	TRANSPORTATION/District/Benefit Accrual		
09/17/2021	50297	8,468.83	Ill Municipal Retire	IMRF/District/Benefit Accrual	IMRF - IMRF Withholding	24,670.76
09/17/2021	50298	25.00	Illinois Dept Of Rev	EDUCATION/District	EDUCATION ILLINOIS TAX	
09/17/2021	50298	20,253.23	Illinois Dept Of Rev	EDUCATION/District	EDUCATION ILLINOIS TAX	
09/17/2021	50298	577.75	Illinois Dept Of Rev	O & M/District	Building- IL State Withholding	
09/17/2021	50298	1,729.59	Illinois Dept Of Rev	TRANSPORTATION/District	Transportation - IL State Withholding	22,585.57
09/17/2021	50299	3,341.67	Teacher's Health Ins	EDUCATION/District/Employee Deductions	EDUCATION Employee Deductions	
09/17/2021	50299	83.70	Teacher's Health Ins	EDUCATION/District/Employee Deductions	EDUCATION Employee Deductions	
09/17/2021	50299	70.20	Teacher's Health Ins	EDUCATION/District/Employee Deductions	EDUCATION Employee Deductions	
09/17/2021	50299	2,487.71	Teacher's Health Ins	EDUCATION/District/Employee Deductions	EDUCATION Employee Deductions	
09/17/2021	50299	388.14	Teacher's Health Ins	EDUCATION/District/Employee Deductions	EDUCATION Employee Deductions	
09/17/2021	50299	8.23	Teacher's Health Ins	O & M/District/Employee Deductions	Building-Insurance Withholding	
09/17/2021	50299	8.24	Teacher's Health Ins	TRANSPORTATION/District/Employee Deductions	Transportation-Insurance Withholding	
09/17/2021	50299	521.57	Teacher's Health Ins	EDUCATION/District/Employee Deductions	EDUCATION Employee Deductions	
09/17/2021	50299	11.07	Teacher's Health Ins	O & M/District/Employee Deductions	Building-Insurance Withholding	
09/17/2021	50299	11.07	Teacher's Health Ins	TRANSPORTATION/District/Employee Deductions	Transportation-Insurance Withholding	
09/17/2021	50299	62.30	Teacher's Health Ins	EDUCATION/District/Employee Deductions	EDUCATION Employee Deductions	

CHECK DATE	CHECK NUMBER	AMOUNT	VENDOR	ACCOUNT DESCRIPTION	ACCOUNT LEVEL DESCRIPTION	TOTAL
09/17/2021	50299	52.28	Teacher's Health Ins	EDUCATION/District/E mployee Deductions	EDUCATION Employee Deductions	7,046.18
09/17/2021	50300	33,416.53	Teachers Retirement	EDUCATION/District/E mployee Deductions	EDUCATION Employee Deductions	
09/17/2021	50300	837.00	Teachers Retirement	EDUCATION/District/E mployee Deductions	EDUCATION Employee Deductions	
09/17/2021	50300	703.19	Teachers Retirement	EDUCATION/District/E mployee Deductions	EDUCATION Employee Deductions	
09/17/2021	50300	2,153.51	Teachers Retirement	EDUCATION/District/E mployee Deductions	EDUCATION Employee Deductions	
09/17/2021	50300	1,093.75	Teachers Retirement	EDUCATION/District/E mployee Deductions	EDUCATION Employee Deductions	
09/17/2021	50300	5,215.47	Teachers Retirement	EDUCATION/District/E mployee Deductions	EDUCATION Employee Deductions	
09/17/2021	50300	110.67	Teachers Retirement	O & M/District/Employee Deductions	Building-Insurance Withholding	
09/17/2021	50300	110.67	Teachers Retirement	TRANSPORTATION/Distr ict/Employee Deductions	Transportation-Insurance With	
09/17/2021	50300	336.10	Teachers Retirement	EDUCATION/District/E mployee Deductions	EDUCATION Employee Deductions	
09/17/2021	50300	7.13	Teachers Retirement	O & M/District/Employee Deductions	Building-Insurance Withholding	
09/17/2021	50300	7.13	Teachers Retirement	TRANSPORTATION/Distr ict/Employee Deductions	Transportation-Insurance With	
09/17/2021	50300	171.83	Teachers Retirement	EDUCATION/District/E mployee Deductions	EDUCATION Employee Deductions	
09/17/2021	50300	53.95	Teachers Retirement	EDUCATION/District/E mployee Deductions	EDUCATION Employee Deductions	
09/17/2021	50300	45.24	Teachers Retirement	EDUCATION/District/E mployee Deductions	EDUCATION Employee Deductions	44,262.17
09/17/2021	50301	4,268.02	United States Treasu	EDUCATION/District	EDUCATION FICA	
09/17/2021	50301	718.47	United States Treasu	O & M/District	Building - FICA Withholding	
09/17/2021	50301	2,535.01	United States Treasu	TRANSPORTATION/Distr ict		

CHECK DATE	CHECK NUMBER	AMOUNT	VENDOR	ACCOUNT DESCRIPTION	ACCOUNT LEVEL DESCRIPTION	TOTAL
09/17/2021	50301	1,208.00	United States Treasu	EDUCATION/District/Federal Tax Withheld	EDUCATION FED W/H TAX	
09/17/2021	50301	70.00	United States Treasu	TRANSPORTATION/District/Federal Tax Withheld	Transportation-Federal Withhold	
09/17/2021	50301	50.00	United States Treasu	EDUCATION/District/Federal Tax Withheld	EDUCATION FED W/H TAX	
09/17/2021	50301	39,300.00	United States Treasu	EDUCATION/District/Federal Tax Withheld	EDUCATION FED W/H TAX	
09/17/2021	50301	1,033.22	United States Treasu	O & M/District/Federal Tax Withheld	Building - Federal Withholding	
09/17/2021	50301	2,315.84	United States Treasu	TRANSPORTATION/District/Federal Tax Withheld	Transportation-Federal Withhold	
09/17/2021	50301	7,186.58	United States Treasu	EDUCATION/District	EDUCATION Medicare Withiheld	
09/17/2021	50301	184.25	United States Treasu	O & M/District	Building- Medicare Withholding	
09/17/2021	50301	609.08	United States Treasu	TRANSPORTATION/District	Transportation-Medicare With	
09/17/2021	50301	7,521.50	United States Treasu	SOCIAL SECURITY/MEDICARE/District	SS/Medicare - FICA Withholding	
09/17/2021	50301	7,979.91	United States Treasu	SOCIAL SECURITY/MEDICARE/District	SS/Medicare-Medicare Withheld	74,979.88
09/17/2021	50302	977.54	Wisconsin Dept Of Re	EDUCATION/District	EDUCATION WISC ST TAX	
09/17/2021	50302	146.20	Wisconsin Dept Of Re	TRANSPORTATION/District	Transportation -WI State With	1,123.74
09/20/2021	50303	5,827.10	Innersync Studio, LT	EDUCATION/District/O PERATIONS SERVICES/PROFESSIONAL AND TECHNICAL SER	Tech--- Web Hosting	5,827.10
09/22/2021	50304	11,560.00	22Vets LLC	EDUCATION/District/D ATA PROCESSING SERVICES/DUES & FEES	Tech-- Chromebook licenses	11,560.00
09/22/2021	50305	700.00	Accurate Biometrics	EDUCATION/District/B OARD OF EDUCATION SERVICES/PROFESSIONAL	Board--- Purch Svc	

CHECK DATE	CHECK NUMBER	AMOUNT	VENDOR	ACCOUNT DESCRIPTION	ACCOUNT LEVEL DESCRIPTION	TOTAL
09/22/2021	50305	230.00	Accurate Biometrics	L AND TECHNICAL SER TRANSPORTATION/Distr ict/PUPIL TRANSPORTATION SERVICES/OTHER PURCHASED SERVICES	Trans--- Fingerprinting	930.00
09/22/2021	50306	110.00	Adams, Gretta	EDUCATION/PRIMARY/EL EMENTARY/SUPPLIES	Pri-- Supp/Mat	110.00
09/22/2021	50307	398.00	All-Ways Transportat	TRANSPORTATION/SEDOL /SpecED/PUPIL TRANSPORTATION SERVICES/PUPIL TRANSPORTATION	Trans--- SPED P/S Off Campus	398.00
09/22/2021	50308	177.55	Alpha Baking Co, Inc	EDUCATION/District/F OOD SERVICES/SUPPLIES	FoodSvc--- Food Purch. (Prgrm)	
09/22/2021	50308	101.78	Alpha Baking Co, Inc	EDUCATION/District/F OOD SERVICES/SUPPLIES	FoodSvc--- Food Purch. (Prgrm)	
09/22/2021	50308	112.70	Alpha Baking Co, Inc	EDUCATION/District/F OOD SERVICES/SUPPLIES	FoodSvc--- Food Pur (Non-Prog)	
09/22/2021	50308	177.55	Alpha Baking Co, Inc	EDUCATION/District/F OOD SERVICES/SUPPLIES	FoodSvc--- Food Purch. (Prgrm)	
09/22/2021	50308	101.78	Alpha Baking Co, Inc	EDUCATION/District/F OOD SERVICES/SUPPLIES	FoodSvc--- Food Purch. (Prgrm)	671.36
09/22/2021	50311	64.99	Amazon	EDUCATION/ELEMENTARY /ELEMENTARY/SUPPLIES	Elem-- Supp/Mat	
09/22/2021	50311	-251.66	Amazon	EDUCATION/District/S PECIAL ED PROGRAMS PRE-K/SUPPLIES	SPED--- PreK Supp/Mat	
09/22/2021	50311	84.95	Amazon	EDUCATION/PRIMARY/EL EMENTARY/SUPPLIES	Pri-- Supp/Mat	
09/22/2021	50311	34.53	Amazon	EDUCATION/ELEMENTARY /ELEMENTARY/SUPPLIES	Elem-- Supp/Mat	
09/22/2021	50311	23.98	Amazon	EDUCATION/ELEMENTARY /ELEMENTARY/SUPPLIES	Elem-- Supp/Mat	

CHECK DATE	CHECK NUMBER	AMOUNT	VENDOR	ACCOUNT DESCRIPTION	ACCOUNT LEVEL DESCRIPTION	TOTAL
09/22/2021	50311	17.67	Amazon	EDUCATION/ELEMENTARY /ELEMENTARY/TEXTBOOK S	Elem-- Textbks (Schoolwide)	
09/22/2021	50311	0.00	Amazon	EDUCATION/PRIMARY/EL EMENTARY/SUPPLIES	Pri-- Supp/Mat	
09/22/2021	50311	39.18	Amazon	EDUCATION/PRIMARY/EL EMENTARY/SUPPLIES	Pri--- Art Supp/Mat	
09/22/2021	50311	320.72	Amazon	EDUCATION/MIDDLE/MID DLE-JUNIOR HIGH/SUPPLIES	MS-- Supp/Mat	
09/22/2021	50311	234.59	Amazon	EDUCATION/ELEMENTARY /ELEMENTARY/SUPPLIES	Elem-- Supp/Mat	
09/22/2021	50311	1,675.66	Amazon	EDUCATION/District/D ATA PROCESSING SERVICES/SUPPLIES	Tech--- Supp/Mat	
09/22/2021	50311	39.89	Amazon	EDUCATION/PRIMARY/EL EMENTARY/SUPPLIES	Pri-- Supp/Mat	
09/22/2021	50311	58.32	Amazon	EDUCATION/MIDDLE/MID DLE-JUNIOR HIGH/TEXTBOOKS	MS--- ELA resources	
09/22/2021	50311	10.99	Amazon	EDUCATION/PRIMARY/EL EMENTARY/SUPPLIES	Pri-- Kindergarten Sup/Mat	
09/22/2021	50311	58.19	Amazon	EDUCATION/District/R EGULAR PROGRAMS/SUPPLIES	Dist--- Convenience Acct S/M	
09/22/2021	50311	47.94	Amazon	EDUCATION/MIDDLE/MID DLE-JUNIOR HIGH/TEXTBOOKS	MS--- ELA resources	
09/22/2021	50311	169.99	Amazon	EDUCATION/ELEMENTARY /ELEMENTARY/SUPPLIES	Elem-- Supp/Mat	
09/22/2021	50311	799.96	Amazon	EDUCATION/District/F OOD SERVICES/SUPPLIES	FoodSvc--- S/M (Program)	
09/22/2021	50311	103.68	Amazon	EDUCATION/MIDDLE/MID DLE-JUNIOR HIGH/SUPPLIES	MS-- Supp/Mat	
09/22/2021	50311	19.99	Amazon	EDUCATION/District/R EGULAR PROGRAMS/SUPPLIES	Dist--- Convenience Acct S/M	

CHECK DATE	CHECK NUMBER	AMOUNT	VENDOR	ACCOUNT DESCRIPTION	ACCOUNT LEVEL DESCRIPTION	TOTAL
09/22/2021	50311	434.85	Amazon	O & M/District/CARE AND UPKEEP OF BUILDING SE/SUPPLIES	Dist--- COVID Supp/Mat	
09/22/2021	50311	56.27	Amazon	TRANSPORTATION/District/PUPIL TRANSPORTATION SERVICES/PROFESSIONAL AND TECHNICAL SER	Trans--- Purchase Services	
09/22/2021	50311	40.94	Amazon	O & M/District/CARE AND UPKEEP OF BUILDING SE/SUPPLIES	Dist--- COVID Supp/Mat	
09/22/2021	50311	73.11	Amazon	TRANSPORTATION/District/PUPIL TRANSPORTATION SERVICES/PROFESSIONAL AND TECHNICAL SER	Trans--- Purchase Services	
09/22/2021	50311	161.40	Amazon	O & M/District/CARE AND UPKEEP OF BUILDING SE/SUPPLIES	Dist--- COVID Supp/Mat	
09/22/2021	50311	155.96	Amazon	O & M/ELEMENTARY/CARE AND UPKEEP OF BUILDING SE/SUPPLIES	Elem--- Maintenance Supp/Mat	
09/22/2021	50311	102.89	Amazon	EDUCATION/ELEMENTARY /ELEMENTARY/SUPPLIES	Elem-- Supp/Mat	
09/22/2021	50311	96.19	Amazon	EDUCATION/MIDDLE/MIDDLE/JUNIOR HIGH/SUPPLIES		
09/22/2021	50311	251.66	Amazon	EDUCATION/District/SPECIAL ED PROGRAMS PRE-K/SUPPLIES	SPED--- PreK Supp/Mat	
09/22/2021	50311	198.00	Amazon	EDUCATION/MIDDLE/MIDDLE/JUNIOR HIGH/SUPPLIES	MS-- Supp/Mat	5,124.83
09/22/2021	50312	16,230.00	American Capital Fin	EDUCATION/District/D	Tech-- Used Chromebk purchase	16,230.00

CHECK DATE	CHECK NUMBER	AMOUNT	VENDOR	ACCOUNT DESCRIPTION	ACCOUNT LEVEL DESCRIPTION	TOTAL
09/22/2021	50313	239.00	ASCD	ATA PROCESSING SERVICES/SUPPLIES EDUCATION/District/D IRECTION OF CENTRAL SUPPORT S/DUES & FEES	Dir of Curr/Inst Dues/Fees	
09/22/2021	50313	239.00	ASCD	ATA PROCESSING SERVICES/SUPPLIES EDUCATION/District/D IRECTION OF CENTRAL SUPPORT S/DUES & FEES	Dir of Curr/Inst Dues/Fees	478.00
09/22/2021	50314	621.00	Benny's Service Cent	TRANSPORTATION/Distr ict/PUPI L TRANSPORTATION SERVICES/OTHER PURCHASED SERVICES	Trans--- Bus Inspection	
09/22/2021	50314	116.00	Benny's Service Cent	TRANSPORTATION/Distr ict/PUPI L TRANSPORTATION SERVICES/OTHER PURCHASED SERVICES	Trans--- Bus Inspection	737.00
09/22/2021	50315	16,939.00	Big Hollow PTO	EDUCATION/District/R EGULAR PROGRAMS/SUPPLIES	PTO Designated Exp	16,939.00
09/22/2021	50316	7,320.00	Brecht's Data Soluti	EDUCATION/District/D ATA PROCESSING SERVICES/PROFESSIONA L AND TECHNICAL SER	SPED--- IDEA Mngmt Software	7,320.00
09/22/2021	50317	513.60	BSN Sports LLC	EDUCATION/MIDDLE/Int erscholastic Programs/SUPPLIES	MS--- Athletic Uniforms	513.60
09/22/2021	50318	2,537.50	Carroll, Megan	EDUCATION/District/H EALTH SERVICES/PROFESSIONA L AND TECHNICAL SER	SPED-- OT/PT/Health Pur Svc	2,537.50
09/22/2021	50319	47,957.75	Computer Nationwide	CAPITAL PROJECTS/District/FA CILITIES ACQUISITION AND CON/REPLACEMENT &	Camera System Upgrade	

CHECK DATE	CHECK NUMBER	AMOUNT	VENDOR	ACCOUNT DESCRIPTION	ACCOUNT LEVEL DESCRIPTION	TOTAL
09/22/2021	50319	5,715.00	Computer Nationwide	NEW EQUIPMENT CAPITAL PROJECTS/District/FA CILITIES ACQUISITION AND CON/REPLACEMENT & NEW EQUIPMENT	Camera System Upgrade	
09/22/2021	50319	2,333.20	Computer Nationwide	CAPITAL PROJECTS/District/FA CILITIES ACQUISITION AND CON/REPLACEMENT & NEW EQUIPMENT	Camera System Upgrade	56,005.95
09/22/2021	50320	277.20	Connection's Academy	EDUCATION/Connection Day SC-Palatine/Spec Ed Private Tuition/Private Tuition	SPED--- Private School Tuition	
09/22/2021	50320	720.72	Connection's Academy	EDUCATION/Connection Day SC-Palatine/Spec Ed Private Tuition/Private Tuition	SPED--- Private School Tuition	
09/22/2021	50320	831.60	Connection's Academy	EDUCATION/Connection Day SC-Palatine/Spec Ed Private Tuition/Private Tuition	SPED--- Private School Tuition	1,829.52
09/22/2021	50321	16,480.00	Data Recognition Cor	EDUCATION/District/G RANTS/DUES & FEES	ESSERIII-- LAS links license	
09/22/2021	50321	115.00	Data Recognition Cor	EDUCATION/District/G RANTS/DUES & FEES	ESSERIII-- LAS links license	16,595.00
09/22/2021	50322	9,000.00	Eder Casella & Co	EDUCATION/District/B OARD OF EDUCATION SERVICES/AUDIT/FINAN CIAL SERVICES	Board-- Audit	9,000.00

CHECK DATE	CHECK NUMBER	AMOUNT	VENDOR	ACCOUNT DESCRIPTION	ACCOUNT LEVEL DESCRIPTION	TOTAL
09/22/2021	50323	14,371.00	Emeric Facility Serv	O & M/District/CARE AND UPKEEP OF BUILDING SE/CLEANING SERVICES	Cleaning Service	14,371.00
09/22/2021	50324	1,690.50	Engler Callaway Baas	EDUCATION/District/I MPROVEMENT OF INSTRUCTION SER/PROFESSIONAL AND TECHNICAL SER	IDEA-- Impr of Inst	1,690.50
09/22/2021	50325	36.17	Exceptional Learners	EDUCATION/District/H EALTH SERVICES/PROFESSIONAL AND TECHNICAL SER	SPED-- OT/PT/Health Pur Svc	
09/22/2021	50325	2,384.23	Exceptional Learners	EDUCATION/District/H EALTH SERVICES/PROFESSIONAL AND TECHNICAL SER	SPED-- OT/PT/Health Pur Svc	2,420.40
09/22/2021	50326	450.00	Frazier, Kimberly	EDUCATION/District/E LEMENTARY/TUITION REIMBURSEMENT	Distr-- Tuition Reimb.	450.00
09/22/2021	50327	75.00	Freund, Vic	EDUCATION/MIDDLE/Int erscholastic Programs/PURCHASED SERVICES	Volleyball Officials	75.00
09/22/2021	50328	625.00	Glass Guy Chicago	O & M/MIDDLE/CARE AND UPKEEP OF BUILDING SE/REPAIR AND MAINTENANCE SERVICE	MS--- O&M Repairs and Maint	625.00
09/22/2021	50329	5,266.87	Gordon Food Service	EDUCATION/District/F OOD SERVICES/SUPPLIES	FoodSvc--- Food Purch. (Prgrm)	
09/22/2021	50329	594.40	Gordon Food Service	EDUCATION/District/F OOD SERVICES/SUPPLIES	FoodSvc--- S/M (Program)	
09/22/2021	50329	557.14	Gordon Food Service	EDUCATION/District/F OOD SERVICES/SUPPLIES	FoodSvc--- Food Purch. (Prgrm)	

CHECK DATE	CHECK NUMBER	AMOUNT	VENDOR	ACCOUNT DESCRIPTION	ACCOUNT LEVEL DESCRIPTION	TOTAL
09/22/2021	50329	-22.95	Gordon Food Service	EDUCATION/District/F OOD SERVICES/SUPPLIES	FoodSvc--- Food Purch. (Prgrm)	
09/22/2021	50329	3,763.44	Gordon Food Service	EDUCATION/District/F OOD SERVICES/SUPPLIES	FoodSvc--- Food Purch. (Prgrm)	
09/22/2021	50329	201.14	Gordon Food Service	EDUCATION/District/F OOD SERVICES/SUPPLIES	FoodSvc--- S/M (Program)	
09/22/2021	50329	3,916.77	Gordon Food Service	EDUCATION/District/F OOD SERVICES/SUPPLIES	FoodSvc--- Food Purch. (Prgrm)	
09/22/2021	50329	618.93	Gordon Food Service	EDUCATION/District/F OOD SERVICES/SUPPLIES	FoodSvc--- S/M (Program)	
09/22/2021	50329	2,346.08	Gordon Food Service	EDUCATION/District/F OOD SERVICES/SUPPLIES	FoodSvc--- Food Purch. (Prgrm)	
09/22/2021	50329	423.71	Gordon Food Service	EDUCATION/District/F OOD SERVICES/SUPPLIES	FoodSvc--- S/M (Program)	
09/22/2021	50329	32.75	Gordon Food Service	EDUCATION/District/F OOD SERVICES/SUPPLIES	FoodSvc--- S/M (Program)	
09/22/2021	50329	408.10	Gordon Food Service	EDUCATION/District/F OOD SERVICES/SUPPLIES	FoodSvc--- Food Pur (Non-Prog)	
09/22/2021	50329	5,289.21	Gordon Food Service	EDUCATION/District/F OOD SERVICES/SUPPLIES	FoodSvc--- Food Purch. (Prgrm)	
09/22/2021	50329	323.66	Gordon Food Service	EDUCATION/District/F OOD SERVICES/SUPPLIES	FoodSvc--- S/M (Program)	
09/22/2021	50329	3,526.37	Gordon Food Service	EDUCATION/District/F OOD SERVICES/SUPPLIES	FoodSvc--- Food Purch. (Prgrm)	
09/22/2021	50329	61.20	Gordon Food Service	EDUCATION/District/F OOD SERVICES/SUPPLIES	FoodSvc--- S/M (Program)	

CHECK DATE	CHECK NUMBER	AMOUNT	VENDOR	ACCOUNT DESCRIPTION	ACCOUNT LEVEL DESCRIPTION	TOTAL
09/22/2021	50329	3,265.67	Gordon Food Service	EDUCATION/District/F OOD SERVICES/SUPPLIES	FoodSvc--- Food Purch. (Prgrm)	
09/22/2021	50329	612.60	Gordon Food Service	EDUCATION/District/F OOD SERVICES/SUPPLIES	FoodSvc--- S/M (Program)	
09/22/2021	50329	-822.55	Gordon Food Service	EDUCATION/District/F OOD SERVICES/SUPPLIES	FoodSvc--- Food Purch. (Prgrm)	
09/22/2021	50329	1,913.54	Gordon Food Service	EDUCATION/District/F OOD SERVICES/SUPPLIES	FoodSvc--- Food Purch. (Prgrm)	
09/22/2021	50329	153.65	Gordon Food Service	EDUCATION/District/F OOD SERVICES/SUPPLIES	FoodSvc--- S/M (Program)	32,429.73
09/22/2021	50330	5,103.61	Granite Telecommunic	TRANSPORTATION/Distr ict/PUPIL TRANSPORTATION SERVICES/GASOLINE	Trans--- Fuel	
09/27/2021	50330	-5,103.61	Granite Telecommunic	TRANSPORTATION/Distr ict/PUPIL TRANSPORTATION SERVICES/GASOLINE	Trans--- Fuel	
09/22/2021	50331	101.27	Grower Equipment & S	O & M/District/CARE AND UPKEEP OF BUILDING SE/SUPPLIES	Dist--- Maintenance Supp/Mat	
09/22/2021	50331	68.06	Grower Equipment & S	O & M/District/CARE AND UPKEEP OF GROUNDS SER/SUPPLIES	Dist--- Grounds Supp/Mat	169.33
09/22/2021	50332	850.12	Hodges, Loizzi, Eise	EDUCATION/District/B OARD OF EDUCATION SERVICES/LEGAL SERVICES	Board-- Legal Services	850.12
09/22/2021	50333	117.00	Huemann Water Condit	O & M/MIDDLE/CARE AND UPKEEP OF BUILDING SE/WATER/SEWER	MS--- Water/Sewer Services	

CHECK DATE	CHECK NUMBER	AMOUNT	VENDOR	ACCOUNT DESCRIPTION	ACCOUNT LEVEL DESCRIPTION	TOTAL
09/22/2021	50333	117.00	Huemann Water Condit	O & M/PRIMARY/CARE AND UPKEEP OF BUILDING SE/WATER/SEWER SERVICES	Pri--- Water/Sewer Services	234.00
09/22/2021	50334	165.00	Iahperd	EDUCATION/MIDDLE/IMPROVEMENT OF INSTRUCTION SER/PROFESSIONAL AND TECHNICAL SER	MS-- Impr of Inst. (staff)	165.00
09/22/2021	50335	172.00	IASB Publications	EDUCATION/District/BOARD OF EDUCATION SERVICES/PROFESSIONAL AND TECHNICAL SER	Board--- Purch Svc	172.00
09/22/2021	50336	400.00	Illinois Association	EDUCATION/District/BOARD OF EDUCATION SERVICES/PROFESSIONAL AND TECHNICAL SER	Board--- Purch Svc	400.00
09/22/2021	50337	3,472.00	Illinois MTSS Networ	EDUCATION/District/IMPROVEMENT OF INSTRUCTION SER/PROFESSIONAL AND TECHNICAL SER	IDEA-- Impr of Inst	3,472.00
09/22/2021	50339	1,200.00	Jensen, Kimberly	EDUCATION/District/ELEMENTARY/TUITION REIMBURSEMENT	Distr-- Tuition Reimb.	1,200.00
09/22/2021	50340	1,328.50	Kully Supply	O & M/District/CARE AND UPKEEP OF BUILDING SE/SUPPLIES	Dist--- COVID Supp/Mat	1,328.50
09/22/2021	50341	195.00	Lake County Regional	EDUCATION/District/IMPROVEMENT OF INSTRUCTION SER/PROFESSIONAL AND TECHNICAL SER	Impr. of Instr--- Admin	195.00
09/22/2021	50342	200.00	Lake County Superint	EDUCATION/District/OFFICE OF THE SUPERINTENDENT	Supt--- Dues & Fees	200.00

CHECK DATE	CHECK NUMBER	AMOUNT	VENDOR	ACCOUNT DESCRIPTION	ACCOUNT LEVEL DESCRIPTION	TOTAL
				S/DUES & FEES		
09/22/2021	50343	172.48	Leginski, Elizabeth	EDUCATION/PRIMARY/EL EMENTARY/SUPPLIES	Pri-- Kindergarten Sup/Mat	
09/22/2021	50343	163.92	Leginski, Elizabeth	EDUCATION/PRIMARY/EL EMENTARY/SUPPLIES	Pri-- Kindergarten Sup/Mat	
09/22/2021	50343	96.27	Leginski, Elizabeth	EDUCATION/PRIMARY/EL EMENTARY/SUPPLIES	Pri-- Supp/Mat	432.67
09/22/2021	50344	475.00	Lucas, Dawn	EDUCATION/District/E LEMENTARY/TUITION REIMBURSEMENT	Distr-- Tuition Reimb.	475.00
09/22/2021	50345	382.22	Martin-Upton, Eileen	EDUCATION/District/H EALTH SERVICES/PROFESSIONA L AND TECHNICAL SER	SPED-- OT/PT/Health Pur Svc	382.22
09/22/2021	50346	1,177.20	McGraw Hill LLC	EDUCATION/MIDDLE/MID DLE-JUNIOR HIGH/SUPPLIES	MS--- Soc. Studies Supp/Mat	1,177.20
09/22/2021	50347	36.38	Menards	TRANSPORTATION/Distr ict/PUPIL TRANSPORTATION SERVICES/REPAIR AND MAINTENANCE SERVICE	Trans--- Rep/Maintenance	
09/22/2021	50347	20.52	Menards	O & M/District/CARE AND UPKEEP OF BUILDING SE/SUPPLIES	Dist--- Maintenance Supp/Mat	
09/22/2021	50347	43.90	Menards	O & M/PRIMARY/CARE AND UPKEEP OF BUILDING SE/SUPPLIES	Pri--- Maintenance Supp/Mat	
09/22/2021	50347	28.96	Menards	EDUCATION/District/D ATA PROCESSING SERVICES/SUPPLIES	Tech--- Supp/Mat	
09/22/2021	50347	80.79	Menards	O & M/ELEMENTARY/CARE AND UPKEEP OF BUILDING SE/SUPPLIES	Elem--- Maintenance Supp/Mat	
09/22/2021	50347	199.94	Menards	TRANSPORTATION/Distr	Trans--- Supp/Mat	

CHECK DATE	CHECK NUMBER	AMOUNT	VENDOR	ACCOUNT DESCRIPTION	ACCOUNT LEVEL DESCRIPTION	TOTAL
09/22/2021	50347	39.40	Menards	ict/PUPIL TRANSPORTATION SERVICES/SUPPLIES O & M/District/CARE AND UPKEEP OF BUILDING SE/SUPPLIES	Dist--- Maintenance Supp/Mat	
09/22/2021	50347	95.06	Menards	O & M/District/CARE AND UPKEEP OF BUILDING SE/SUPPLIES	Dist--- Maintenance Supp/Mat	544.95
09/22/2021	50348	7.50	Mid-West Truckers As	TRANSPORTATION/Distr ict/PUPIL TRANSPORTATION SERVICES/OTHER PURCHASED SERVICES	Trans--- Random Drug Testing	7.50
09/22/2021	50349	80.95	Morrison, Susan	EDUCATION/PRIMARY/EL EMENTARY/SUPPLIES	Pri-- Kindergarten Sup/Mat	
09/22/2021	50349	359.20	Morrison, Susan	EDUCATION/District/E LEMENTARY/TUITION REIMBURSEMENT	Distr-- Tuition Reimb.	440.15
09/22/2021	50350	75.00	Mroz, Greg	EDUCATION/MIDDLE/Int erscholastic Programs/PURCHASED SERVICES	Volleyball Officials	75.00
09/22/2021	50351	37.98	Napa Auto Supply Fox	TRANSPORTATION/Distr ict/PUPIL TRANSPORTATION SERVICES/SUPPLIES	Trans--- Supp/Mat	
09/22/2021	50351	61.47	Napa Auto Supply Fox	TRANSPORTATION/Distr ict/PUPIL TRANSPORTATION SERVICES/SUPPLIES	Trans--- Supp/Mat	99.45
09/22/2021	50352	36.00	NCC - Peterson Produ	O & M/District/CARE AND UPKEEP OF BUILDING SE/SUPPLIES	Dist--- Custodial Supp/Mat	
09/22/2021	50352	148.52	NCC - Peterson Produ	O & M/MIDDLE/CARE AND UPKEEP OF	MS--- Custodial Supp/Mat	

CHECK DATE	CHECK NUMBER	AMOUNT	VENDOR	ACCOUNT DESCRIPTION	ACCOUNT LEVEL DESCRIPTION	TOTAL
09/22/2021	50352	144.18	NCC - Peterson Produ	BUILDING SE/SUPPLIES O & M/ELEMENTARY/CARE AND UPKEEP OF BUILDING SE/SUPPLIES	Elem--- Custodial Supp/Mat	
09/22/2021	50352	144.19	NCC - Peterson Produ	O & M/PRIMARY/CARE AND UPKEEP OF BUILDING SE/SUPPLIES	Pri--- Custodial Supp/Mat	472.89
09/22/2021	50353	98.99	Neill, Jennifer	EDUCATION/MIDDLE/MID DLE-JUNIOR HIGH/SUPPLIES	MS-- Supp/Mat	98.99
09/22/2021	50354	1,400.00	Net56	O & M/District/CARE AND UPKEEP OF BUILDING SE/Net56	Internet Services (Net 56)	1,400.00
09/22/2021	50355	1,260.00	Nierman Landscape &	O & M/District/CARE AND UPKEEP OF GROUNDS SER/PROFESSIONAL AND TECHNICAL SER	Grounds Upkeep Service	
09/22/2021	50355	1,900.00	Nierman Landscape &	O & M/District/CARE AND UPKEEP OF GROUNDS SER/PROFESSIONAL AND TECHNICAL SER	Grounds Upkeep Service	
09/22/2021	50355	1,260.00	Nierman Landscape &	O & M/District/CARE AND UPKEEP OF GROUNDS SER/PROFESSIONAL AND TECHNICAL SER	Grounds Upkeep Service	
09/22/2021	50355	2,925.00	Nierman Landscape &	O & M/District/CARE AND UPKEEP OF GROUNDS SER/PROFESSIONAL AND TECHNICAL SER	Grounds Upkeep Service	7,345.00
09/22/2021	50356	75.00	Northern Illinois Mu	EDUCATION/MIDDLE/Int erscholastic	Band--- Dues & Fees	75.00

CHECK DATE	CHECK NUMBER	AMOUNT	VENDOR	ACCOUNT DESCRIPTION	ACCOUNT LEVEL DESCRIPTION	TOTAL
09/22/2021	50357	2,250.00	NWEA	Programs/DUES & FEES EDUCATION/District/A ssessment/PROFESSION AL AND TECHNICAL SER	Dist- MAP Test Pur Svcs	2,250.00
09/22/2021	50358	911.58	Oriental Trading Com	EDUCATION/ELEMENTARY /ELEMENTARY/SUPPLIES	Elem-- Supp/Mat	911.58
09/22/2021	50359	610.00	PAHCS II/Northwester	TRANSPORTATION/Distr ict/PUPIL TRANSPORTATION SERVICES/OTHER PURCHASED SERVICES	Trans--- Bus Driver Physicals	610.00
09/22/2021	50360	1,698.41	PMA Leasing, INC	EDUCATION/District/C ARE AND UPKEEP OF EQUIPMENT S/RENTALS	Dist-- Copy Machine Lease	
09/22/2021	50360	1,698.41	PMA Leasing, INC	EDUCATION/District/C ARE AND UPKEEP OF EQUIPMENT S/RENTALS	Dist-- Copy Machine Lease	
09/22/2021	50360	865.00	PMA Leasing, INC	EDUCATION/District/C ARE AND UPKEEP OF EQUIPMENT S/RENTALS	Dist-- Copy Machine Lease	
09/22/2021	50360	865.00	PMA Leasing, INC	EDUCATION/District/C ARE AND UPKEEP OF EQUIPMENT S/RENTALS	Dist-- Copy Machine Lease	
09/22/2021	50360	1,865.00	PMA Leasing, INC	EDUCATION/District/C ARE AND UPKEEP OF EQUIPMENT S/RENTALS	Dist-- Copy Machine Lease	
09/22/2021	50360	1,865.00	PMA Leasing, INC	EDUCATION/District/C ARE AND UPKEEP OF EQUIPMENT S/RENTALS	Dist-- Copy Machine Lease	
09/22/2021	50360	547.00	PMA Leasing, INC	EDUCATION/District/C ARE AND UPKEEP OF EQUIPMENT S/RENTALS	Dist-- Copy Machine Lease	
09/22/2021	50360	547.00	PMA Leasing, INC	EDUCATION/District/C ARE AND UPKEEP OF EQUIPMENT S/RENTALS	Dist-- Copy Machine Lease	
09/22/2021	50360	575.85	PMA Leasing, INC	EDUCATION/District/C ARE AND UPKEEP OF	Dist-- Copy Machine Lease	

CHECK DATE	CHECK NUMBER	AMOUNT	VENDOR	ACCOUNT DESCRIPTION	ACCOUNT LEVEL DESCRIPTION	TOTAL
09/22/2021	50360	575.85	PMA Leasing, INC	EQUIPMENT S/RENTALS EDUCATION/District/C ARE AND UPKEEP OF EQUIPMENT S/RENTALS	Dist-- Copy Machine Lease	
09/22/2021	50360	700.00	PMA Leasing, INC	EQUIPMENT S/RENTALS EDUCATION/District/C ARE AND UPKEEP OF EQUIPMENT S/RENTALS	Dist-- Copy Machine Lease	
09/22/2021	50360	700.00	PMA Leasing, INC	EQUIPMENT S/RENTALS EDUCATION/District/C ARE AND UPKEEP OF EQUIPMENT S/RENTALS	Dist-- Copy Machine Lease	12,502.52
09/22/2021	50361	71.98	Quill Corp	EDUCATION/District/F OOD SERVICES/SUPPLIES	FoodSvc--- S/M (Program)	
09/22/2021	50361	30.58	Quill Corp	EDUCATION/District/F ISCAL SERVICES/SUPPLIES	Business-- Supp/Mat	102.56
09/22/2021	50362	1,170.00	Rabine Mechanical	O & M/PRIMARY/CARE AND UPKEEP OF BUILDING SE/REPAIR AND MAINTENANCE SERVICE	Pri--- O&M Repair & Maint	1,170.00
09/22/2021	50363	1,725.00	Raptor Technologies	EDUCATION/District/S ECURITY SERVICES/DUES & FEES	Dist-- Security Service Fee	1,725.00
09/22/2021	50364	1,107.87	Ray Chevrolet	TRANSPORTATION/Distr ict/PUPIL TRANSPORTATION SERVICES/REPAIR AND MAINTENANCE SERVICE	Trans--- Rep/Maintenance	1,107.87
09/22/2021	50365	522.09	Schindler Elevator C	O & M/District/OPERATION AND MAINTENANCE OF P/PROFESSIONAL AND TECHNICAL SER	Dist--- Elevator Inspection	522.09
09/22/2021	50366	58.06	School Specialty	EDUCATION/ELEMENTARY /ELEMENTARY/SUPPLIES	Elem-- Supp/Mat	
09/22/2021	50366	557.21	School Specialty	EDUCATION/ELEMENTARY /ELEMENTARY/SUPPLIES	Elem-- Supp/Mat	615.27

CHECK DATE	CHECK NUMBER	AMOUNT	VENDOR	ACCOUNT DESCRIPTION	ACCOUNT LEVEL DESCRIPTION	TOTAL
09/22/2021	50367	16,221.00	SEDOL	O & M/District/PAYMENTS FOR SPECIAL EDUCATION/OTHER PURCHASED SERVICES	O&M SEDOL	
09/22/2021	50367	24,730.85	SEDOL	EDUCATION/SEDOL/Spec ED/TuitionOtherDistri	SPED--- SEDOL Tuition	40,951.85
09/22/2021	50368	6,754.50	Speech Path Speciali	EDUCATION/District/P SYCHOLOGICAL SERVICES/PROFESSIONA	SPED--- Psych Pur Svc	6,754.50
09/22/2021	50369	116.69	Sposato-Jucha, Chiar	EDUCATION/MIDDLE/EDU CATIONAL MEDIA SERVICES/SUPPLIES	MS--- Library Books	116.69
09/22/2021	50370	3,060.00	St Benedict Technolo	EDUCATION/District/D ATA PROCESSING SERVICES/OTHER PURCHASED SERVICES	Tech--- Suppt Svc (SBTC)	3,060.00
09/22/2021	50371	1,413.00	Strand, Melissa Lynn	EDUCATION/District/H EALTH SERVICES/PROFESSIONA	SPED-- OT/PT/Health Pur Svc	1,413.00
09/22/2021	50372	540.00	Techstar America Cor	EDUCATION/PRIMARY/EL EMENTARY/Copy Supplies	Pri- Copy Supp/Mat	
09/22/2021	50372	175.00	Techstar America Cor	EDUCATION/District/C ARE AND UPKEEP OF EQUIPMENT S/RENTALS	Dist-- Copy Machine Lease	
09/22/2021	50372	272.00	Techstar America Cor	EDUCATION/District/C ARE AND UPKEEP OF EQUIPMENT S/RENTALS	Dist-- Copy Machine Lease	987.00
09/22/2021	50373	1,230.00	The Mulch Center	O & M/District/CARE AND UPKEEP OF GROUNDS SER/SUPPLIES	Dist--- Grounds Supp/Mat	1,230.00
09/22/2021	50374	316.00	Thomson Reuters-West	EDUCATION/District/B OARD OF EDUCATION SERVICES/PROFESSIONA	Board--- Residency Purch Svc	316.00

CHECK DATE	CHECK NUMBER	AMOUNT	VENDOR	ACCOUNT DESCRIPTION	ACCOUNT LEVEL DESCRIPTION	TOTAL
09/22/2021	50375	385.00	Topline Transportati	L AND TECHNICAL SER TRANSPORTATION/Distr ict/PUPIL	Trans--- CDL Permits	385.00
09/22/2021	50376	250.00	University of Wiscon	TRANSPORTATION SERVICES/OTHER PURCHASED SERVICES EDUCATION/District/R	Dist--- Convenience Acct S/M	250.00
09/22/2021	50377	80.00	Wex Health, Inc	EGULAR PROGRAMS/SUPPLIES EDUCATION/District/B	Board--Dues/Fee RevTrck & Bank	80.00
09/30/2021	50378	23,768.20	22Vets LLC	BOARD OF EDUCATION SERVICES/DUES & FEES EDUCATION/District/D	Tech--- Supp/Mat	23,768.20
09/30/2021	50379	10,500.00	Alpha Prime Communic	ATA PROCESSING SERVICES/SUPPLIES EDUCATION/District/R	Dist--- Radios (Internal)	10,500.00
09/30/2021	50381	345.20	Amazon	EGULAR PROGRAMS/SUPPLIES EDUCATION/ELEMENTARY	Elem-- Supp/Mat	
09/30/2021	50381	530.87	Amazon	/ELEMENTARY/SUPPLIES EDUCATION/District/D	Tech--- Supp/Mat	
09/30/2021	50381	175.54	Amazon	ATA PROCESSING SERVICES/SUPPLIES EDUCATION/District/R	Dist--- Convenience Acct S/M	
09/30/2021	50381	336.13	Amazon	EGULAR PROGRAMS/SUPPLIES EDUCATION/ELEMENTARY	Elem-- Supp/Mat	
09/30/2021	50381	226.59	Amazon	/ELEMENTARY/SUPPLIES O & M/District/CARE	Dist--- Custodial Supp/Mat	
09/30/2021	50381	107.94	Amazon	AND UPKEEP OF BUILDING SE/SUPPLIES EDUCATION/District/D	Tech--- Supp/Mat	
09/30/2021	50381	203.80	Amazon	ATA PROCESSING SERVICES/SUPPLIES EDUCATION/ELEMENTARY	Elem-- Nurse Lice kits	
				/HEALTH SERVICES/SUPPLIES		

CHECK DATE	CHECK NUMBER	AMOUNT	VENDOR	ACCOUNT DESCRIPTION	ACCOUNT LEVEL DESCRIPTION	TOTAL
09/30/2021	50381	21.99	Amazon	EDUCATION/District/R EGULAR PROGRAMS/SUPPLIES	Dist--- Convenience Acct S/M	
09/30/2021	50381	12.98	Amazon	EDUCATION/District/S PECIAL EDUCATION/SUPPLIES	SPED--- Supp/Mat	
09/30/2021	50381	235.09	Amazon	EDUCATION/MIDDLE/EDU CATIONAL MEDIA SERVICES/SUPPLIES	MS--- Library Grant	
09/30/2021	50381	137.56	Amazon	TRANSPORTATION/Distr ict/PUPIL TRANSPORTATION SERVICES/PROFESSIONA L AND TECHNICAL SER	Trans--- Purchase Services	
09/30/2021	50381	19.99	Amazon	EDUCATION/ELEMENTARY /ELEMENTARY/SUPPLIES	Elem-- Supp/Mat	
09/30/2021	50381	726.16	Amazon	EDUCATION/District/S PECIAL EDUCATION/SUPPLIES	SPED--- Supp/Mat	
09/30/2021	50381	73.12	Amazon	EDUCATION/ELEMENTARY /ELEMENTARY/SUPPLIES	Elem-- Supp/Mat	
09/30/2021	50381	181.66	Amazon	EDUCATION/ELEMENTARY /ELEMENTARY/SUPPLIES	Elem-- Supp/Mat	
09/30/2021	50381	173.94	Amazon	EDUCATION/District/O FFICE OF THE PRINCIPAL SERVIC/SUPPLIES	Curr Dir. Supp/Mat	
09/30/2021	50381	25.55	Amazon	EDUCATION/ELEMENTARY /ELEMENTARY/SUPPLIES	Elem-- Supp/Mat	
09/30/2021	50381	540.16	Amazon	O & M/District/OPERATION AND MAINTENANCE OF P/PROFESSIONAL AND TECHNICAL SER	Dist-- COVID Pur/Svc	
09/30/2021	50381	190.32	Amazon	EDUCATION/PRIMARY/EL EMENTARY/SUPPLIES	Pri-- Kindergarten Sup/Mat	
09/30/2021	50381	13.55	Amazon	EDUCATION/District/R EGULAR PROGRAMS/SUPPLIES	Dist--- Convenience Acct S/M	

CHECK DATE	CHECK NUMBER	AMOUNT	VENDOR	ACCOUNT DESCRIPTION	ACCOUNT LEVEL DESCRIPTION	TOTAL
09/30/2021	50381	1,283.37	Amazon	EDUCATION/MIDDLE/MID DLE-JUNIOR HIGH/Workbooks	MS--- Math Workbooks	
09/30/2021	50381	310.60	Amazon	EDUCATION/District/S PECIAL EDUCATION/SUPPLIES	SPED--- Supp/Mat	
09/30/2021	50381	38.69	Amazon	EDUCATION/District/S PECIAL EDUCATION/SUPPLIES	SPED--- Supp/Mat	
09/30/2021	50381	169.00	Amazon	EDUCATION/District/R EGULAR PROGRAMS/SUPPLIES	Dist--- Convenience Acct S/M	
09/30/2021	50381	43.08	Amazon	EDUCATION/District/S PECIAL EDUCATION/SUPPLIES	SPED--- Supp/Mat	
09/30/2021	50381	17.80	Amazon	EDUCATION/ELEMENTARY /ELEMENTARY/TEXTBOOK S	Elem-- Textbks (Schoolwide)	
09/30/2021	50381	83.70	Amazon	EDUCATION/ELEMENTARY /ELEMENTARY/SUPPLIES	Elem-- Supp/Mat	
09/30/2021	50381	22.96	Amazon	EDUCATION/District/S PECIAL EDUCATION/SUPPLIES	SPED--- Supp/Mat	
09/30/2021	50381	339.80	Amazon	O & M/District/OPERATION AND MAINTENANCE OF P/PROFESSIONAL AND TECHNICAL SER	Dist-- COVID Pur/Svc	
09/30/2021	50381	129.04	Amazon	EDUCATION/ELEMENTARY /ELEMENTARY/TEXTBOOK S	Elem-- Textbks (Schoolwide)	
09/30/2021	50381	112.80	Amazon	EDUCATION/ELEMENTARY /ELEMENTARY/SUPPLIES	Elem-- Supp/Mat	6,828.98
09/30/2021	50382	399.00	Apple, Inc	EDUCATION/District/S PECIAL EDUCATION/SUPPLIES	SPED--- Supp/Mat	
09/30/2021	50382	79.00	Apple, Inc	EDUCATION/District/S PECIAL EDUCATION/SUPPLIES	SPED--- Supp/Mat	478.00

CHECK DATE	CHECK NUMBER	AMOUNT	VENDOR	ACCOUNT DESCRIPTION	ACCOUNT LEVEL DESCRIPTION	TOTAL
09/30/2021	50383	50.00	Arndt, Christine	EDUCATION/District/E XECUTIVE ADMINISTRATION	Admin cell phone stipend	50.00
09/30/2021	50384	364.84	Biancalana, Venette	EDUCATION/ELEMENTARY /ELEMENTARY/SUPPLIES	Elem-- Supp/Mat	
09/30/2021	50384	50.00	Biancalana, Venette	EDUCATION/District/E XECUTIVE ADMINISTRATION	Admin cell phone stipend	414.84
09/30/2021	50385	1,000.00	Carnegie Learning, I	EDUCATION/District/D ATA PROCESSING SERVICES/SOFTWARE	Tech--- Fast Forward	1,000.00
09/30/2021	50386	3,591.75	Carroll, Megan	EDUCATION/District/H EALTH SERVICES/PROFESSIONA	SPED-- OT/PT/Health Pur Svc	3,591.75
09/30/2021	50387	2,972.93	ComEd	O & M/District/CARE AND UPKEEP OF BUILDING SE/ELECTRICITY	Energy Electricity	
09/30/2021	50387	3,721.86	ComEd	O & M/District/CARE AND UPKEEP OF BUILDING SE/ELECTRICITY	Energy Electricity	6,694.79
09/30/2021	50388	4,090.50	Connection's Academy	EDUCATION/Connection Day SC-Palatine/Spec Ed Private Tuition/Private Tuition	SPED--- Private School Tuition	
09/30/2021	50388	1,363.50	Connection's Academy	EDUCATION/Connection Day SC-Palatine/Spec Ed Private Tuition/Private Tuition	SPED--- Private School Tuition	5,454.00
09/30/2021	50389	83.95	Decker Equipment	O & M/District/CARE AND UPKEEP OF	Dist--- Custodial Supp/Mat	

CHECK DATE	CHECK NUMBER	AMOUNT	VENDOR	ACCOUNT DESCRIPTION	ACCOUNT LEVEL DESCRIPTION	TOTAL
09/30/2021	50389	111.93	Decker Equipment	BUILDING SE/SUPPLIES EDUCATION/District/F OOD SERVICES/REPAIR AND MAINTENANCE SERVICE	FoodSvc--- Repairs and Maint	
09/30/2021	50389	83.95	Decker Equipment	O & M/District/CARE AND UPKEEP OF BUILDING SE/SUPPLIES	Dist--- Maintenance Supp/Mat	279.83
09/30/2021	50390	50.00	DeNovo, Kira	EDUCATION/District/E XECUTIVE ADMINISTRATION	Admin cell phone stipend	50.00
09/30/2021	50391	700.00	Dyopath	SERVI/Other Benefit EDUCATION/District/F ISCAL SERVICES/PROFESSIONA L AND TECHNICAL SER	Distr-- Bus P/S (SinglePath)	700.00
09/30/2021	50392	660.00	ED Clark Photography	EDUCATION/District/R EGULAR PROGRAMS/SUPPLIES	Dist--- Convenience Acct S/M	660.00
09/30/2021	50393	4,412.82	Follett School Solut	EDUCATION/District/E DUCATIONAL MEDIA SERVICES/SOFTWARE	Dist--- Follett	4,412.82
09/30/2021	50394	50.00	Gold, Robert	EDUCATION/District/E XECUTIVE ADMINISTRATION	Admin cell phone stipend	50.00
09/30/2021	50395	1,598.38	Granite Telecommunic	O & M/District/CARE AND UPKEEP OF BUILDING SE/At&t	Phone Services (AT&T)	1,598.38
09/30/2021	50396	5,103.61	Grant Township Highw	TRANSPORTATION/Distr ict/PUPIL TRANSPORTATION SERVICES/GASOLINE	Trans--- Fuel	5,103.61
09/30/2021	50397	52.38	Grower Equipment & S	O & M/District/CARE AND UPKEEP OF GROUNDS SER/SUPPLIES	Dist--- Grounds Supp/Mat	52.38

CHECK DATE	CHECK NUMBER	AMOUNT	VENDOR	ACCOUNT DESCRIPTION	ACCOUNT LEVEL DESCRIPTION	TOTAL
09/30/2021	50398	500.00	Heinemann, Gordon	EDUCATION/ELEMENTARY /IMPROVEMENT OF INSTRUCTION SER/PROFESSIONAL AND TECHNICAL SER	Elem-- Impr of Inst. (staff)	500.00
09/30/2021	50399	50.00	Hetrovicz, Michelle	EDUCATION/District/E XECUTIVE ADMINISTRATION SERVI/Other Benefit	Admin cell phone stipend	50.00
09/30/2021	50400	3,100.00	IXL Learning	EDUCATION/MIDDLE/MID DLE-JUNIOR HIGH/SOFTWARE	MS-- Software (IXL)	3,100.00
09/30/2021	50401	50.00	Janusz, Lenayn	EDUCATION/District/E XECUTIVE ADMINISTRATION SERVI/Other Benefit	Admin cell phone stipend	50.00
09/30/2021	50402	150.00	John A Raber & Assoc	O & M/District/CARE AND UPKEEP OF BUILDING SE/Water Testing Service	Dist--- Water Testing Service	150.00
09/30/2021	50403	751.00	Johnson Controls	O & M/PRIMARY/CARE AND UPKEEP OF BUILDING SE/REPAIR AND MAINTENANCE SERVICE	Pri--- O&M Repair & Maint	751.00
09/30/2021	50404	50.00	King, Victorene Lee	EDUCATION/District/E XECUTIVE ADMINISTRATION SERVI/Other Benefit	Admin cell phone stipend	50.00
09/30/2021	50405	227.70	Lakeshore Learning M	EDUCATION/District/S PECIAL ED PROGRAMS PRE-K/SUPPLIES	SPED--- PreK Supp/Mat	
09/30/2021	50405	526.70	Lakeshore Learning M	EDUCATION/District/S PECIAL EDUCATION/SUPPLIES	SPED--- Supp/Mat	
09/30/2021	50405	961.40	Lakeshore Learning M	EDUCATION/District/S PECIAL EDUCATION/SUPPLIES	SPED--- Supp/Mat	1,715.80
09/30/2021	50406	860.00	Lauterbach & Amen, L	EDUCATION/District/B	Board--- Actuarial Svc	860.00

CHECK DATE	CHECK NUMBER	AMOUNT	VENDOR	ACCOUNT DESCRIPTION	ACCOUNT LEVEL DESCRIPTION	TOTAL
09/30/2021	50407	3,188.67	Martin-Upton, Eileen	BOARD OF EDUCATION SERVICES/AUDIT/FINANCIAL SERVICES EDUCATION/District/HEALTH	SPED-- OT/PT/Health Pur Svc	3,188.67
09/30/2021	50408	50.00	McCulley, Matthew	SERVICES/PROFESSIONAL AND TECHNICAL SERVICES/EXECUTIVE ADMINISTRATION	Admin cell phone stipend	50.00
09/30/2021	50409	50.00	Meek, Stephanie	SERVI/Other Benefit EDUCATION/District/EXECUTIVE ADMINISTRATION	Admin cell phone stipend	50.00
09/30/2021	50410	99.34	Menards	SERVI/Other Benefit O & M/MIDDLE/CARE AND UPKEEP OF BUILDING SE/SUPPLIES	MS--- Maintenance Supp/Mat	
09/30/2021	50410	45.29	Menards	O & M/ELEMENTARY/CARE AND UPKEEP OF BUILDING SE/SUPPLIES	Elem--- Maintenance Supp/Mat	144.63
09/30/2021	50411	11,454.03	Mitel	O & M/District/CARE AND UPKEEP OF BUILDING SE/At&t	Phone Services (AT&T)	11,454.03
09/30/2021	50412	50.00	Morley, Sunny	EDUCATION/District/EXECUTIVE ADMINISTRATION	Admin cell phone stipend	50.00
09/30/2021	50413	50.00	Mullen, Rachel Ann	SERVI/Other Benefit EDUCATION/District/EXECUTIVE ADMINISTRATION	Admin cell phone stipend	50.00
09/30/2021	50414	9.90	Napa Auto Supply Fox	TRANSPORTATION/District/PUPIL TRANSPORTATION SERVICES/SUPPLIES	Trans--- Supp/Mat	

CHECK DATE	CHECK NUMBER	AMOUNT	VENDOR	ACCOUNT DESCRIPTION	ACCOUNT LEVEL DESCRIPTION	TOTAL
09/30/2021	50414	134.41	Napa Auto Supply Fox	TRANSPORTATION/Distr ict/PUPIL TRANSPORTATION SERVICES/SUPPLIES	Trans--- Supp/Mat	144.31
09/30/2021	50415	52.50	NCC - Peterson Produ	O & M/MIDDLE/CARE AND UPKEEP OF BUILDING SE/SUPPLIES	MS--- Custodial Supp/Mat	
09/30/2021	50415	52.50	NCC - Peterson Produ	O & M/ELEMENTARY/CARE AND UPKEEP OF BUILDING SE/SUPPLIES	Elem--- Custodial Supp/Mat	
09/30/2021	50415	52.50	NCC - Peterson Produ	O & M/PRIMARY/CARE AND UPKEEP OF BUILDING SE/SUPPLIES	Pri--- Custodial Supp/Mat	
09/30/2021	50415	261.27	NCC - Peterson Produ	O & M/PRIMARY/CARE AND UPKEEP OF BUILDING SE/SUPPLIES	Pri--- Custodial Supp/Mat	
09/30/2021	50415	366.24	NCC - Peterson Produ	O & M/ELEMENTARY/CARE AND UPKEEP OF BUILDING SE/SUPPLIES	Elem--- Custodial Supp/Mat	
09/30/2021	50415	457.80	NCC - Peterson Produ	O & M/MIDDLE/CARE AND UPKEEP OF BUILDING SE/SUPPLIES	MS--- Custodial Supp/Mat	
09/30/2021	50415	936.60	NCC - Peterson Produ	O & M/MIDDLE/CARE AND UPKEEP OF BUILDING SE/SUPPLIES	MS--- Custodial Supp/Mat	
09/30/2021	50415	1,239.83	NCC - Peterson Produ	O & M/PRIMARY/CARE AND UPKEEP OF BUILDING SE/SUPPLIES	Pri--- Custodial Supp/Mat	
09/30/2021	50415	980.40	NCC - Peterson Produ	O &	Elem--- Custodial Supp/Mat	4,399.64

CHECK DATE	CHECK NUMBER	AMOUNT	VENDOR	ACCOUNT DESCRIPTION	ACCOUNT LEVEL DESCRIPTION	TOTAL
09/30/2021	50416	287.25	Nicor Gas	M/ELEMENTARY/CARE AND UPKEEP OF BUILDING SE/SUPPLIES O &	Elem--- Natural Gas	
09/30/2021	50416	364.28	Nicor Gas	M/ELEMENTARY/CARE AND UPKEEP OF BUILDING SE/NATURAL GAS O & M/PRIMARY/CARE	Pri--- Natural Gas	
09/30/2021	50416	1,235.48	Nicor Gas	AND UPKEEP OF BUILDING SE/NATURAL GAS O & M/MIDDLE/CARE	MS--- Natural Gas	1,887.01
09/30/2021	50417	6,309.69	Onyx Asset Service G	AND UPKEEP OF BUILDING SE/ELECTRICITY O & M/District/CARE	Energy Electricity	6,309.69
09/30/2021	50418	201.95	Oriental Trading Com	EDUCATION/ELEMENTARY /ELEMENTARY/SUPPLIES	Elem-- Supp/Mat	201.95
09/30/2021	50419	825.00	Ovassapian, Madeline	EDUCATION/District/E LEMENTARY/TUITION REIMBURSEMENT	Distr-- Tuition Reimb.	825.00
09/30/2021	50420	1,600.00	Paridad Education Co	EDUCATION/District/I MPROVEMENT OF INSTRUCTION SER/PROFESSIONAL AND TECHNICAL SER	Impr. of Instr--- Staff	1,600.00
09/30/2021	50421	50.00	Pittman, Erin	EDUCATION/District/E XECUTIVE ADMINISTRATION	Admin cell phone stipend	50.00
09/30/2021	50422	500.00	Quadient Finance USA	SERVI/Other Benefit EDUCATION/District/B OARD OF EDUCATION SERVICES/COMMUNICATI ON	Board-- Communication	500.00

CHECK DATE	CHECK NUMBER	AMOUNT	VENDOR	ACCOUNT DESCRIPTION	ACCOUNT LEVEL DESCRIPTION	TOTAL
09/30/2021	50423	97.00	Quinlan & Fabish Mus	EDUCATION/MIDDLE/MID DLE-JUNIOR HIGH/SUPPLIES	MS--- Band Supp/Mat	
09/30/2021	50423	168.72	Quinlan & Fabish Mus	EDUCATION/MIDDLE/MID DLE-JUNIOR HIGH/SUPPLIES	MS--- Band Supp/Mat	
09/30/2021	50423	97.00	Quinlan & Fabish Mus	EDUCATION/MIDDLE/MID DLE-JUNIOR HIGH/SUPPLIES	MS--- Band Supp/Mat	
09/30/2021	50423	100.50	Quinlan & Fabish Mus	EDUCATION/MIDDLE/MID DLE-JUNIOR HIGH/SUPPLIES	MS--- Band Supp/Mat	
09/30/2021	50423	166.28	Quinlan & Fabish Mus	EDUCATION/MIDDLE/MID DLE-JUNIOR HIGH/SUPPLIES	MS--- Band Supp/Mat	629.50
09/30/2021	50424	60.00	Randall Standridge M	EDUCATION/MIDDLE/MID DLE-JUNIOR HIGH/SUPPLIES	MS--- Band Supp/Mat	60.00
09/30/2021	50425	107.80	ReadyRefresh by Nest	O & M/MIDDLE/CARE AND UPKEEP OF BUILDING SE/WATER/SEWER SERVICES	MS--- Water/Sewer Services	
09/30/2021	50425	146.71	ReadyRefresh by Nest	O & M/ELEMENTARY/CARE AND UPKEEP OF BUILDING SE/WATER/SEWER SERVICES	Elem--- Water/Sewer Services	
09/30/2021	50425	73.12	ReadyRefresh by Nest	O & M/PRIMARY/CARE AND UPKEEP OF BUILDING SE/WATER/SEWER SERVICES	Pri--- Water/Sewer Services	327.63
09/30/2021	50426	15,807.72	Savvas Learning Comp	EDUCATION/ELEMENTARY /ELEMENTARY/SOFTWARE	Elem--- Software(WordsTheirWay)	
09/30/2021	50426	15,807.72	Savvas Learning Comp	EDUCATION/PRIMARY/EL EMENTARY/SOFTWARE	Pri-- Software (WordsTheirWay)	31,615.44
09/30/2021	50427	688.36	School Life	EDUCATION/PRIMARY/EL	Pri-- Supp/Mat	

CHECK DATE	CHECK NUMBER	AMOUNT	VENDOR	ACCOUNT DESCRIPTION	ACCOUNT LEVEL DESCRIPTION	TOTAL
09/30/2021	50427	458.90	School Life	EDUCATION/ELEMENTARY /ELEMENTARY/SUPPLIES	Elem-- Supp/Mat	1,147.26
09/30/2021	50428	918.00	School Mate	EDUCATION/ELEMENTARY /ELEMENTARY/SUPPLIES	Elem--- Agendas/Planners	918.00
09/30/2021	50429	725.21	School Specialty	EDUCATION/District/R EGULAR	Dist--- Convenience Acct S/M	725.21
09/30/2021	50430	0.00	Spotify Inc.	EDUCATION/MIDDLE/Int erscholastic Programs/DUES & FEES	Band--- Dues & Fees	
09/30/2021	50430	488.50	Spotify Inc.	EDUCATION/MIDDLE/MID DLE-JUNIOR HIGH/DUES & FEES	MS--- Proj LTW Dues/Fees	488.50
09/30/2021	50431	50.00	Swiderski, Derek	TRANSPORTATION/Distr ict/SERVICE AREA DIRECTION/Other Benefit	Trans-- cell phone stipend	50.00
09/30/2021	50432	62.43	Waukegan Safe And Lo	O & M/MIDDLE/CARE AND UPKEEP OF BUILDING SE/SUPPLIES	MS--- Maintenance Supp/Mat	
09/30/2021	50432	13.53	Waukegan Safe And Lo	O & M/MIDDLE/CARE AND UPKEEP OF BUILDING SE/SUPPLIES	MS--- Maintenance Supp/Mat	
09/30/2021	50432	36.00	Waukegan Safe And Lo	O & M/MIDDLE/CARE AND UPKEEP OF BUILDING SE/SUPPLIES	MS--- Maintenance Supp/Mat	111.96
		1,344,963.48	Totals for checks			

FUND SUMMARY

<u>FUND</u>	<u>DESCRIPTION</u>	<u>BALANCE SHEET</u>	<u>REVENUE</u>	<u>EXPENSE</u>	<u>TOTAL</u>
10	EDUCATION	252,061.45	1,420.75	814,564.82	1,068,047.02
20	O & M	6,473.87	0.00	105,334.79	111,808.66
40	TRANSPORTATION	14,265.06	0.00	44,616.84	58,881.90
50	SOCIAL SECURITY/MEDICARE	28,798.05	0.00	0.00	28,798.05
51	IMRF	15,091.90	0.00	0.00	15,091.90
60	CAPITAL PROJECTS	0.00	0.00	59,380.95	59,380.95
80	TORT FUND	0.00	0.00	2,955.00	2,955.00
***	Fund Summary Totals ***	316,690.33	1,420.75	1,026,852.40	1,344,963.48

***** End of report *****

CHECK DATE	CHECK NUMBER	VENDOR	TOTAL
9/9/2021	50234	Imagine Learning, Inc	\$219,600.00
9/9/2021	50226	GHA Technologies Inc	\$163,336.34
9/17/2021	50301	United States Treasury	\$74,979.88
9/3/2021	50202	United States Treasury	\$68,820.26
9/22/2021	50319	Computer Nationwide	\$56,005.95
9/17/2021	50300	Teachers Retirement System	\$44,262.17
9/3/2021	50201	Teachers Retirement System	\$44,028.19
9/22/2021	50367	SEDOL	\$40,951.85
9/22/2021	50329	Gordon Food Service Inc	\$32,429.73
9/30/2021	50426	Savvas Learning Company	\$31,615.44
9/9/2021	50267	SEDOL	\$29,884.35
9/9/2021	50261	Riverside Technologies Inc	\$26,970.00
9/17/2021	50297	Ill Municipal Retirement Fund	\$24,670.76
9/30/2021	50378	22Vets LLC	\$23,768.20
9/17/2021	50298	Illinois Dept Of Revenue	\$22,585.57
9/3/2021	50199	Illinois Dept Of Revenue	\$21,134.92
9/22/2021	50315	Big Hollow PTO	\$16,939.00
9/22/2021	50321	Data Recognition Corporation	\$16,595.00
9/9/2021	50266	Santander Leasing LLC	\$16,588.00
9/22/2021	50312	American Capital Financial Services	\$16,230.00
9/9/2021	50222	Emeric Facility Services	\$14,371.00
9/22/2021	50323	Emeric Facility Services	\$14,371.00
9/22/2021	50360	PMA Leasing, INC	\$12,502.52
9/9/2021	50248	Midwest Transit Equipment	\$12,279.00
9/22/2021	50304	22Vets LLC	\$11,560.00
9/30/2021	50411	Mitel	\$11,454.03
9/30/2021	50379	Alpha Prime Communications	\$10,500.00
9/22/2021	50322	Eder Casella & Co	\$9,000.00
9/22/2021	50355	Nierman Landscape & Design	\$7,345.00
9/22/2021	50316	Brecht's Data Solutions, Inc	\$7,320.00
9/9/2021	50215	Connection's Academy East	\$7,090.20
9/17/2021	50299	Teacher's Health Insurance Security Fund	\$7,046.18
9/3/2021	50200	Teacher's Health Insurance Security Fund	\$6,979.25
9/9/2021	50270	Spectrum Center Inc	\$6,877.52
9/30/2021	50381	Amazon	\$6,828.98
9/22/2021	50368	Speech Path Specialists	\$6,754.50
9/30/2021	50387	ComEd	\$6,694.79
9/30/2021	50417	Onyx Asset Service Groups LLC	\$6,309.69
9/9/2021	50232	IFSI	\$5,945.00
9/20/2021	50303	Innersync Studio, LTD	\$5,827.10
9/9/2021	50242	Martin-Upton, Eileen	\$5,574.96
9/30/2021	50388	Connection's Academy East	\$5,454.00
9/22/2021	50311	Amazon	\$5,124.83
9/30/2021	50396	Grant Township Highway Department	\$5,103.61
9/30/2021	50393	Follett School Solutions Inc	\$4,412.82

9/30/2021	50415	NCC - Peterson Products	\$4,399.64
9/9/2021	50224	Fox Lake School District	\$4,320.00
9/9/2021	50207	Amazon	\$4,243.36
9/9/2021	50214	Connection's Day School	\$3,624.27
9/30/2021	50386	Carroll, Megan	\$3,591.75
9/9/2021	50228	Grant Township Highway Department	\$3,556.84
9/22/2021	50337	Illinois MTSS Network	\$3,472.00
9/9/2021	50280	Upland Construction & Maintenance LLC	\$3,375.00
9/9/2021	50253	OneTouchPoint Southwest Corp	\$3,338.77
9/30/2021	50407	Martin-Upton, Eileen	\$3,188.67
9/9/2021	50231	Hodges, Loizzi, Eisenhammer, Rodick,Kohn	\$3,150.32
9/30/2021	50400	IXL Learning	\$3,100.00
9/22/2021	50370	St Benedict Technology Consortium	\$3,060.00
9/9/2021	50213	CLIC	\$2,955.00
9/9/2021	50252	NCC - Peterson Products	\$2,633.67
9/9/2021	50212	Carroll, Megan	\$2,556.25
9/22/2021	50318	Carroll, Megan	\$2,537.50
9/9/2021	50208	Antioch School District 34	\$2,450.00
9/9/2021	50247	Midland Paper	\$2,432.80
9/22/2021	50325	Exceptional Learners Collaborative	\$2,420.40
9/9/2021	50229	Growing Leaders Inc	\$2,286.80
9/22/2021	50357	NWEA	\$2,250.00
9/16/2021	50283	Biancalana, Venette Irene	\$2,203.60
9/9/2021	50276	Teaching Strategies LLC	\$2,140.00
9/9/2021	50274	Summers, Brian	\$1,896.50
9/30/2021	50416	Nicor Gas	\$1,887.01
9/9/2021	50269	Simha Trading Inc	\$1,879.84
9/22/2021	50320	Connection's Academy East	\$1,829.52
9/9/2021	50211	Byrnes & Walsh, LLC	\$1,750.00
9/22/2021	50363	Raptor Technologies	\$1,725.00
9/30/2021	50405	Lakeshore Learning Materials	\$1,715.80
9/22/2021	50324	Engler Callaway Baasten & Sraga, LLC	\$1,690.50
9/30/2021	50420	Paridad Education Consutling	\$1,600.00
9/30/2021	50395	Granite Telecommunications	\$1,598.38
9/9/2021	50262	Riverside Insights	\$1,420.75
9/22/2021	50371	Strand, Melissa Lynn	\$1,413.00
9/9/2021	50221	Discount School Supplies	\$1,403.27
9/22/2021	50354	Net56	\$1,400.00
9/9/2021	50279	University Of Oregon	\$1,380.00
9/22/2021	50340	Kully Supply	\$1,328.50
9/9/2021	50233	Illinois MTSS Network	\$1,302.00
9/22/2021	50373	The Mulch Center	\$1,230.00
9/9/2021	50272	Stump, Alison	\$1,200.00
9/16/2021	50285	Coletto, Jessica	\$1,200.00
9/16/2021	50288	Lancaster, Kristina	\$1,200.00
9/22/2021	50339	Jensen, Kimberly	\$1,200.00
9/9/2021	50246	Menards	\$1,182.75

9/22/2021	50346	McGraw Hill LLC	\$1,177.20
9/22/2021	50362	Rabine Mechanical	\$1,170.00
9/30/2021	50427	School Life	\$1,147.26
9/9/2021	50271	Strand, Melissa Lynn	\$1,125.00
9/17/2021	50302	Wisconsin Dept Of Revenue	\$1,123.74
9/22/2021	50364	Ray Chevrolet	\$1,107.87
9/3/2021	50203	Wisconsin Dept Of Revenue	\$1,059.41
9/9/2021	50257	Quadient Finance USA, Inc	\$1,049.43
9/9/2021	50241	Manullang, Korinne	\$1,047.00
9/30/2021	50385	Carnegie Learning, Inc.	\$1,000.00
9/22/2021	50372	Techstar America Corporations	\$987.00
9/9/2021	50216	CustomInk	\$972.84
9/22/2021	50305	Accurate Biometrics	\$930.00
9/30/2021	50428	School Mate	\$918.00
9/22/2021	50358	Oriental Trading Company	\$911.58
9/9/2021	50254	PAHCS II/Northwestern Occ Health	\$870.00
9/16/2021	50293	Schiller, Kathryn	\$866.72
9/30/2021	50406	Lauterbach & Amen, LLP	\$860.00
9/22/2021	50332	Hodges, Loizzi, Eisenhammer, Rodick,Kohn	\$850.12
9/9/2021	50235	Integrated Systems Corporation	\$844.80
9/30/2021	50419	Ovassapian, Madeline Atourina	\$825.00
9/9/2021	50218	Data Recognition Corporation	\$805.10
9/9/2021	50277	Techstar America Corporations	\$798.38
9/9/2021	50260	Ray Chevrolet	\$792.50
9/30/2021	50403	Johnson Controls	\$751.00
9/22/2021	50314	Benny's Service Center, Inc.	\$737.00
9/30/2021	50429	School Specialty	\$725.21
9/30/2021	50391	Dyopath	\$700.00
9/22/2021	50308	Alpha Baking Co, Inc.	\$671.36
9/30/2021	50392	ED Clark Photography	\$660.00
9/30/2021	50423	Quinlan & Fabish Music Co	\$629.50
9/22/2021	50328	Glass Guy Chicago	\$625.00
9/22/2021	50366	School Specialty	\$615.27
9/22/2021	50359	PAHCS II/Northwestern Occ Health	\$610.00
9/9/2021	50227	Gold, Robert	\$585.48
9/9/2021	50223	Erickson, Douglas	\$547.50
9/22/2021	50347	Menards	\$544.95
9/22/2021	50365	Schindler Elevator Corporation	\$522.09
9/22/2021	50317	BSN Sports LLC	\$513.60
9/30/2021	50398	Heinemann, Gordon	\$500.00
9/30/2021	50422	Quadient Finance USA, Inc	\$500.00
9/30/2021	50430	Spotify Inc.	\$488.50
9/22/2021	50313	ASCD	\$478.00
9/30/2021	50382	Apple, Inc	\$478.00
9/16/2021	50290	Provo, Jeanette	\$475.00
9/22/2021	50344	Lucas, Dawn	\$475.00
9/22/2021	50352	NCC - Peterson Products	\$472.89

9/9/2021	50256	Provo, Jeanette	\$465.00
9/9/2021	50278	The Math Learning Center	\$450.00
9/22/2021	50326	Frazier, Kimberly	\$450.00
9/22/2021	50349	Morrison, Susan	\$440.15
9/22/2021	50343	Leginski, Elizabeth	\$432.67
9/30/2021	50384	Biancalana, Venette Irene	\$414.84
9/16/2021	50294	Swiderski, Lisa Marie	\$413.19
9/9/2021	50273	SumBlox Group, LLC	\$404.85
9/9/2021	50205	Accurate Biometrics	\$402.50
9/22/2021	50336	Illinois Association Of School Boards	\$400.00
9/22/2021	50307	All-Ways Transportation Services	\$398.00
9/9/2021	50264	Romero, Lisa	\$395.96
9/9/2021	50225	FSS Technologies, LLC	\$395.00
9/9/2021	50258	RAILS	\$386.00
9/22/2021	50375	Topline Transportation	\$385.00
9/22/2021	50345	Martin-Upton, Eileen	\$382.22
9/30/2021	50425	ReadyRefresh by Nestle	\$327.63
9/22/2021	50374	Thomson Reuters-West	\$316.00
9/16/2021	50295	Wahls, Anne	\$299.44
9/9/2021	50236	IPA Lake Region	\$299.00
9/9/2021	50204	Abraham's On-Site Shredding	\$286.50
9/30/2021	50389	Decker Equipment	\$279.83
9/9/2021	50244	McGill Materials	\$278.00
9/9/2021	50220	DiMaggio, Nicole	\$274.26
9/22/2021	50376	University of Wisconsin-Madison	\$250.00
9/22/2021	50333	Huemann Water Conditioning	\$234.00
9/16/2021	50296	Zeiger, Elyse	\$213.46
9/30/2021	50418	Oriental Trading Company	\$201.95
9/22/2021	50342	Lake County Superintendents Assoc	\$200.00
9/22/2021	50341	Lake County Regional Office Of Education	\$195.00
9/22/2021	50335	IASB Publications	\$172.00
9/22/2021	50331	Grower Equipment & Supply Co	\$169.33
9/22/2021	50334	Iahperd	\$165.00
9/30/2021	50402	John A Raber & Assoc, Inc	\$150.00
9/9/2021	50263	Rochester 100 Inc	\$148.50
9/30/2021	50410	Menards	\$144.63
9/30/2021	50414	Napa Auto Supply Fox Lake	\$144.31
9/9/2021	50240	Klobe, Deonna Bryn	\$140.37
9/9/2021	50281	Waukegan Safe And Lock	\$118.42
9/22/2021	50369	Sposato-Jucha, Chiara Noelle	\$116.69
9/30/2021	50432	Waukegan Safe And Lock	\$111.96
9/9/2021	50238	K & M Printing	\$110.00
9/22/2021	50306	Adams, Gretta	\$110.00
9/22/2021	50361	Quill Corp	\$102.56
9/9/2021	50251	Napa Auto Supply Fox Lake	\$100.35
9/9/2021	50265	Salazar, Kristin	\$100.00
9/16/2021	50284	Boone, Lisa	\$100.00

Exhibit 3

9/16/2021	50286	Frank, Sarah Marie	\$100.00
9/16/2021	50287	Hagen, Christina	\$100.00
9/22/2021	50351	Napa Auto Supply Fox Lake	\$99.45
9/22/2021	50353	Neill, Jennifer	\$98.99
9/22/2021	50377	Wex Health, Inc	\$80.00
9/22/2021	50327	Freund, Vic	\$75.00
9/22/2021	50350	Mroz, Greg	\$75.00
9/22/2021	50356	Northern Illinois Music Conference	\$75.00
9/30/2021	50424	Randall Standridge Music	\$60.00
9/30/2021	50397	Grower Equipment & Supply Co	\$52.38
9/9/2021	50209	Arndt, Christine	\$50.00
9/9/2021	50210	Biancalana, Venette Irene	\$50.00
9/9/2021	50219	DeNovo, Kira	\$50.00
9/9/2021	50230	Hetrovicz, Michelle	\$50.00
9/9/2021	50237	Janusz, Lenayn	\$50.00
9/9/2021	50239	King, Victorene Lee	\$50.00
9/9/2021	50243	McCulley, Matthew	\$50.00
9/9/2021	50245	Meek, Stephanie	\$50.00
9/9/2021	50249	Morley, Sunny	\$50.00
9/9/2021	50250	Mullen, Rachel Ann	\$50.00
9/9/2021	50255	Pittman, Erin	\$50.00
9/9/2021	50259	Raney Day Services	\$50.00
9/9/2021	50268	Sheriff's Office	\$50.00
9/9/2021	50275	Swiderski, Derek	\$50.00
9/30/2021	50383	Arndt, Christine	\$50.00
9/30/2021	50390	DeNovo, Kira	\$50.00
9/30/2021	50394	Gold, Robert	\$50.00
9/30/2021	50399	Hetrovicz, Michelle	\$50.00
9/30/2021	50401	Janusz, Lenayn	\$50.00
9/30/2021	50404	King, Victorene Lee	\$50.00
9/30/2021	50408	McCulley, Matthew	\$50.00
9/30/2021	50409	Meek, Stephanie	\$50.00
9/30/2021	50412	Morley, Sunny	\$50.00
9/30/2021	50413	Mullen, Rachel Ann	\$50.00
9/30/2021	50421	Pittman, Erin	\$50.00
9/30/2021	50431	Swiderski, Derek	\$50.00
9/16/2021	50289	Philippsen, Michelle	\$42.00
9/9/2021	50217	Daily Herald/Paddock Publications, Inc	\$27.60
9/22/2021	50348	Mid-West Truckers Association	\$7.50
9/27/2021	50099	School Life	-\$1,147.26
9/27/2021	49960	Lakeshore Learning Center	-\$1,488.10
9/27/2021	50022	Connection's Academy East	-\$5,454.00

9:37 AM

10/07/21

Accrual Basis

Big Hollow Student Activity Funds
Balance Sheet
 As of September 30, 2021

	Sep 30, 21
ASSETS	
Current Assets	
Checking/Savings	
State Bank Activity Bank Acct	
Girls on the Run	49.13
In & Out Account	1,204.76
National Junior Honor Society	2,715.89
Nature Center	2,616.70
Recycling Club	2,676.83
Student Council	6,809.53
Sunshine Club - Elementary	42.02
Sunshine Club - Primary	861.01
State Bank Activity Bank Acct - Other	406.65
Total State Bank Activity Bank Acct	17,382.52
Total Checking/Savings	17,382.52
Total Current Assets	17,382.52
TOTAL ASSETS	17,382.52
LIABILITIES & EQUITY	
Equity	
Retained Earnings	17,382.52
Total Equity	17,382.52
TOTAL LIABILITIES & EQUITY	17,382.52

Convenience Fund Report September 2021

Account	Beginning Balance	Debits	Credits	Ending Balance
Prek	1010.66			1010.66
KG	2074.18		16.00	2090.18
1st Grade	3898.28			3898.28
2nd Grade	1126.09			1126.09
3rd Grade	2939.01	810.41		2128.60
4th Grade	552.09			552.09
5th Grade	2269.67			2269.67
6th Grade	774.71			774.71
7th Grade	2457.51			2457.51
8th Grade	13361.50			13361.50
Art-P/E	0.00			0.00
Cheer	945.13			945.13
Computers-P	221.24			221.24
Computers-E	-0.49			-0.49
Concessions-Athletic	2203.95			2203.95
Concessions-PE	7542.96			7542.96
Graphics Arts	331.77			331.77
Lets Read to Grow	313.96			313.96
Library-P/E	32.00			32.00
Library-MS	679.12			679.12
Music-P/E	-39.71			-39.71
Noetic Math	59.50			59.50
PBIS-MS	2564.53			2564.53
PE-P	25.75			25.75
PE-E	-245.98			-245.98
Poms	656.23			656.23
Prime Time	2670.00			2670.00
Reading P/E	4355.65			4355.65
Respect	665.00			665.00
Special Ed	33.00			33.00
Sports Camps	318.00			318.00
STARS-P	2020.60			2020.60
STARS-E	3310.77			3310.77
STEM CLUB	317.28			317.28
Yearbook-M	1020.30	660.00		360.30
Yearbook-P/E	625.94			625.94
In & Out Account	2606.04	250.00		2356.04
Total	63696.24	1720.41	16.00	61991.83

**Big Hollow School District 38
Payroll Summary**

Date	Education	O&M	Transportation	IMRF/SS	Total
10-Sep-21	\$555,496.15	\$15,016.25	\$25,750.53	\$19,919.71	\$616,182.64
24-Sep-21	\$570,451.20	\$14,417.04	\$44,003.50	\$23,970.24	\$652,841.98
Grand Total	\$1,125,947.35	\$29,433.29	\$69,754.03	\$43,889.95	\$1,269,024.62

 Board of Education President
 Big Hollow School District 38
 Date

 Board of Education Secretary
 Big Hollow School District 38
 Date



www.bighollow.us

Mr. Robert Gold, Superintendent

Big Hollow District Office
26051 W. Nippersink Rd.
Ingleside, IL 60041
Phone 847-740-1490
Fax 847-740-9172

Big Hollow Primary School (EC-1)
33335 N. Fish Lake Rd.
Ingleside, IL 60041
Phone 847-740-5320
Fax 847-740-3490

Big Hollow Elementary (2-4)
33315 N. Fish Lake Rd.
Ingleside, IL 60041
Phone 847-740-5321
Fax 847-740-3795

Big Hollow Middle School (5-8)
26051 W. Nippersink Rd.
Ingleside, IL 60041
Phone 847-740-5322
Fax 847-740-9021

BOARD OF EDUCATION COMMITTEE REPORT

Date: 09/14//21 **Location:** Superintendent Office

Committee: Building/Grounds/Transportation

Members Present: Doug Pedersen, Lauren Plescia, Joe Cernuska

Others in Attendance: Bob Gold, , Christine Arndt, Derek Swiderski

Duration of Meeting: 4:30 p.m. -- 5:30 p.m.

Topic Points and/or Summary of Discussion:

The following agenda topics were discussed, followed by notes from the meeting in *red*.

- Outdoor classroom project proposal
 - Mr. Gold has a committee looking into the project. There are not projected costs at this time.
- Maintenance shed update
 - The committee discussed having Mr. Gold get quotes water and septic at the maintenance facility.
- School Maintenance Project Grant
 - Playground improvements.
 - Mr. Gold is going to see if the SMPG will cover playground equipment costs.
- Cleaning company performance update
 - Discuss possible restructure for 2022-2023
- Transportation Update
 - The committee discussed traffic flow during pick-up for Primary/Elementary. The situation seems to be improving each week.
 - The committee reviewed the current staffing for bus drivers. We have 3 new drivers who are nearly finished with the licensing process, with 2 more who are beginning at this time as well.

Submitted by:

Robert B. Gold

To: Big Hollow School District 38 Board of Education
 From: Dr. Victorene King, Director of Assessment, Data, and Accountability
 Date: October 12, 2021
 Re: 2021-2022 School Year Fall Assessment Review

Fall NWEA MAP Results

Tables 1 and 2, and graphs 1 and 2 represent the observed attainment for each grade level on the Math and Reading NWEA MAP test for the past three school years.

Table 1.
Fall 2019 to Fall 2021 Math Comparison

Math			
Grade	Fall 2019	Fall 2020	Fall 2021
1	165.3	163.7	159.9
2	179.1	174.2	171.6
3	191.2	186.1	183.5
4	204	197.8	199.5
5	210.9	208.5	204.7
6	215	215.5	212.1
7	220.6	221.3	237.5
8	228.6	228.2	236.1

Figure 1.
Fall 2019 to Fall 2021 Math Comparison

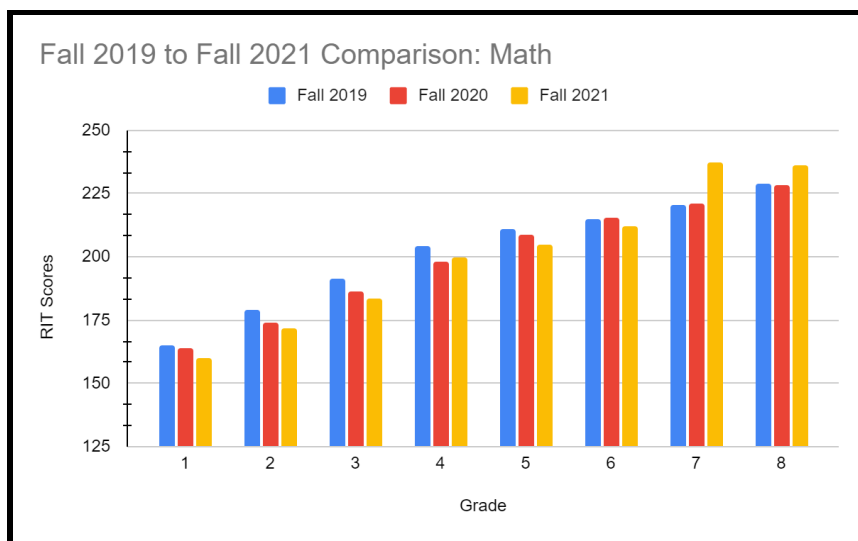
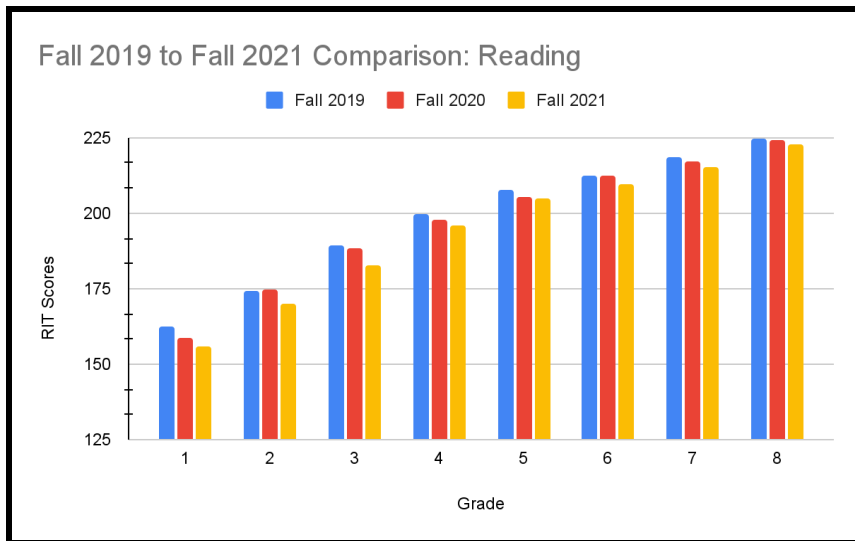


Table 2.
Fall 2019 to Fall 2021 Reading Comparison

Reading			
Grade	Fall 2019	Fall 2020	Fall 2021
1	162.3	158.8	156
2	174.3	174.7	169.9
3	189.2	188.3	182.6
4	199.7	198	195.7
5	207.7	205.2	204.7
6	212.3	212.2	209.8
7	218.6	217.1	215.3
8	224.7	224.1	222.9

Figure 2.
 Fall 2019 to Fall 2021 Reading Comparison



With the exception of 7th and 8th grade math, our data indicates the students are achieving slightly lower than before the pandemic. As you will recall, all grade levels have demonstrated various levels of growth at the end of the school years, but we are aware there is a downward trend occurring.

The next table illustrates each grade level’s overall average RIT compared to the national average as well as the number of students who performed at/above the national average.

Table 3.

Grade Level Average RIT Score Compared to National Average RIT

Grade	Subject	Mean RIT	National Mean RIT	Students At/Above National Mean
1	Math	159.9	160	93
1	Reading	156	155.9	88
2	Math	171.6	175	66
2	Reading	169.9	172.3	69
3	Math	183.5	188.5	66
3	Reading	182.6	186.6	71
4	Math	199.5	199.5	78
4	Reading	195.7	196.7	97
5	Math	204.2	209.1	59
5	Reading	204.7	204.5	99
6	Math	212.1	214.7	86
6	Reading	209.8	210.2	90
7	Math	237.5	220.2	63
7	Reading	215.3	214.2	101
8	Math	236.1	224.9	62
8	Reading	222.9	218	138
7	Alg	241	230.9	23
7	Geom	257	234.7	1
8	Alg	242.7	230.9	17
8	Geom	246.2	234.7	17

CURRENT WORK

School Improvement Plans. One of the most immediate ways the district and building administrators are monitoring these data is through the School Improvement Plans. All three buildings have the same goal of addressing our Multi-Tiered System of Support (MTSS), which states that by the end of the 2021-2022 school year, the Multi-tiered System of Support (MTSS) will be fully implemented as measured by growth on the Self Assessment of MTSS Implementation (SAM-I) by achieving, at a minimum, the emerging-developing rating in all six domains. The SAM-I is an instrument used to measure school-level implementation of a Multi-Tiered System of Supports (MTSS) in the following areas:

- Curriculum standards
- Assessments used to inform instruction
- Multiple tiers of instruction and intervention
- Data-based problem-solving used to make decisions

These initial results are available and can be shared with the Board of Education upon request.

District Capacity Assessment. A secondary way we are working to improve the academic outcomes for all our students is in the way we are assessing and monitoring the way District-leadership operates and functions. We have recently completed the District Capacity Assessment (DCA). The DCA is an action assessment designed to help educational district leaders and staff better align resources with intended outcomes and develop action plans to support the use of effective innovations. It assesses and monitors the following key organizational drivers:

- Leadership Driver
- Competency Driver
- Organization Driver

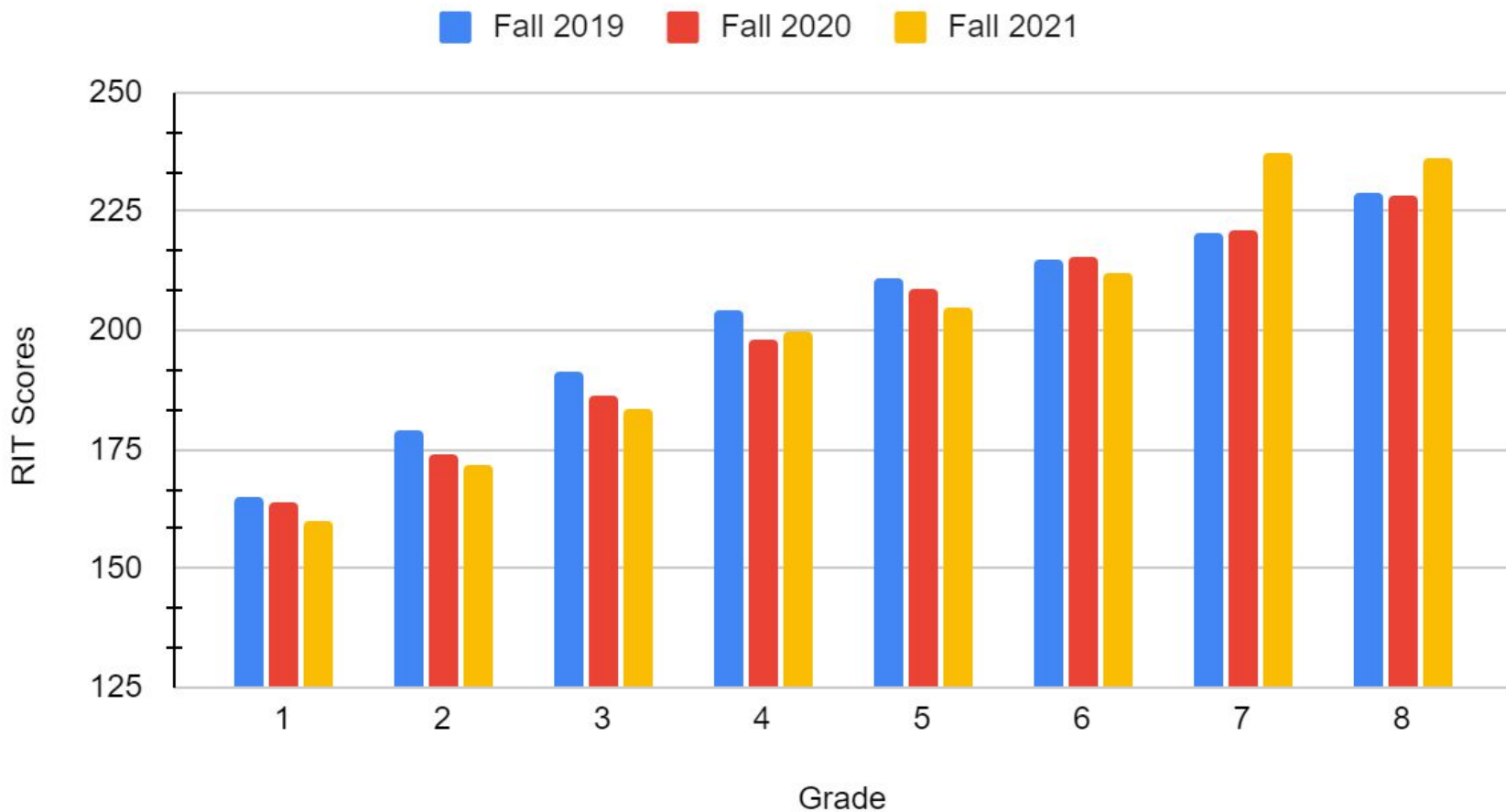
These initial results are available and will be shared with the Board of Education by Mr. Gold in upcoming communications. We have also created an action plan to ensure we meet both short- and long-range goals, and are allocating resources (human, financial, and time) in such a way that results in demonstrable growth. This plan will be available soon and can be shared with the Board of Education upon request.

2021-2022 Fall Assessment Review

Board of Education Report
October 12, 2021

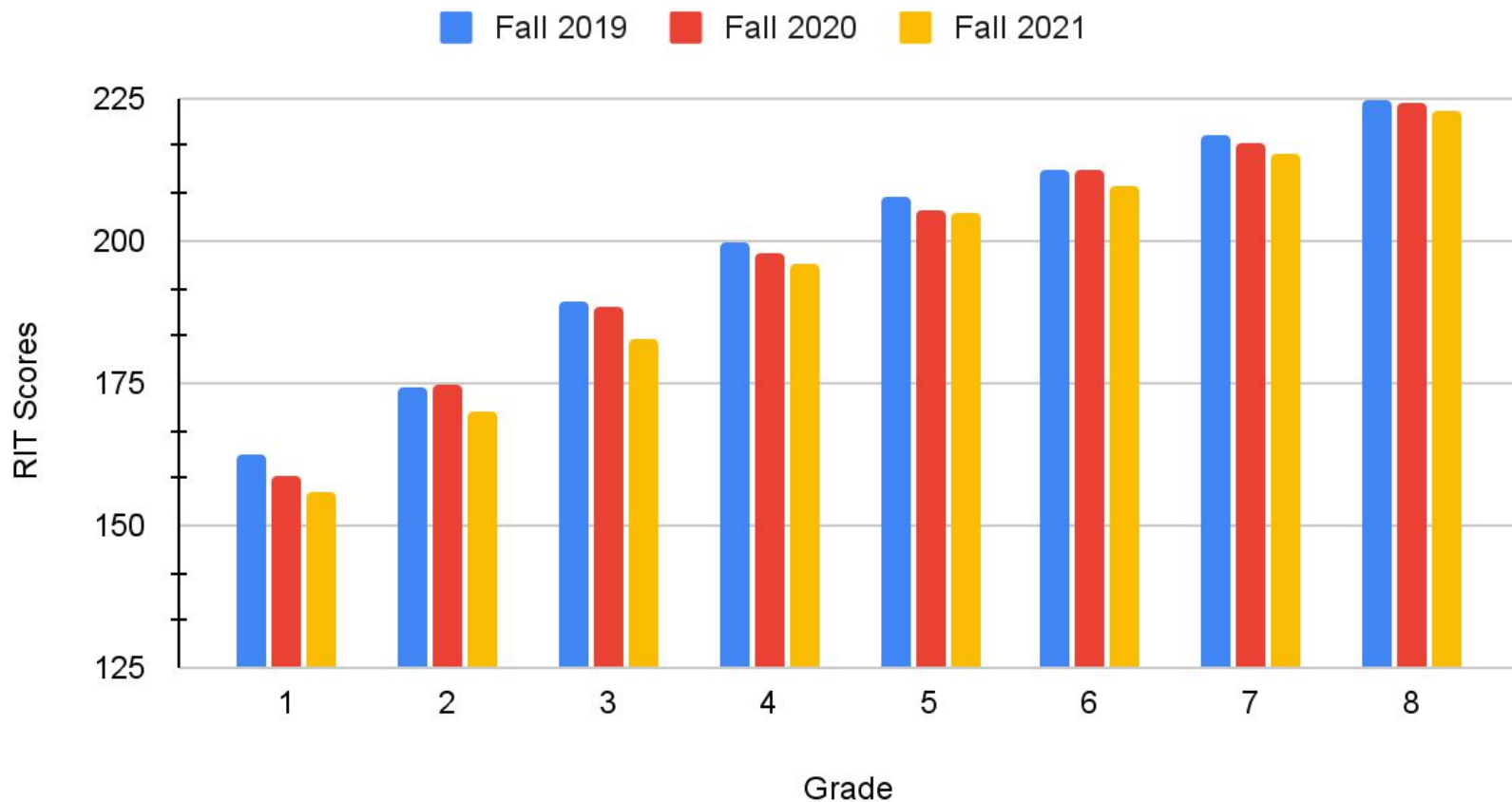
Fall 2019 to Fall 2021 Comparison: Math

Exhibit 8



Fall 2019 to Fall 2021 Comparison: Reading

Exhibit 8



MTSS- Review

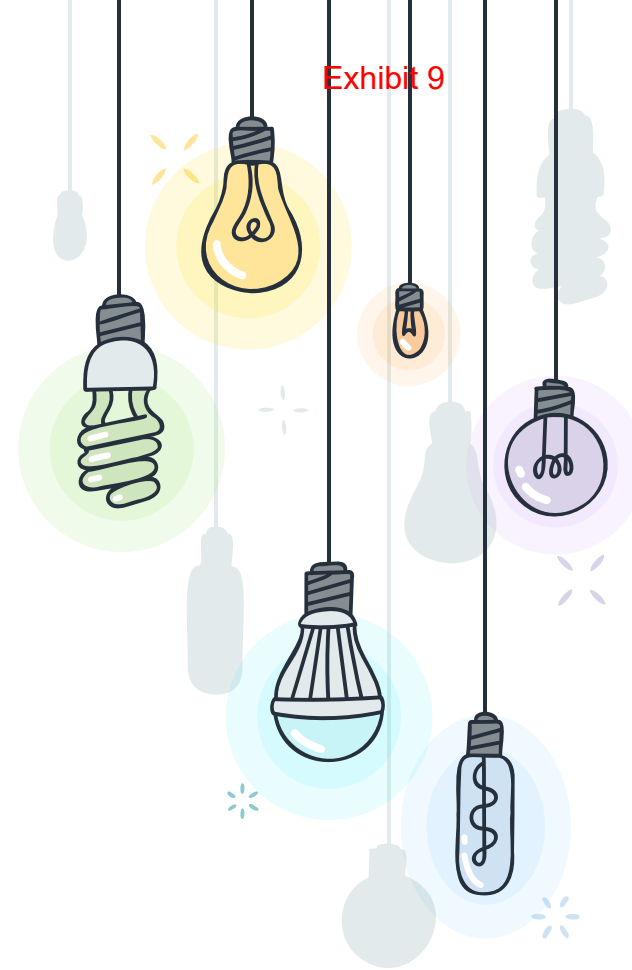
- District Capacity Assessment (DCA)
 - The DCA is an action assessment designed to help educational district leaders and staff better align resources with intended outcomes and develop action plans to support the use of effective innovations. It assesses and monitors the following key organizational drivers:
 - Leadership Driver
 - Competency Driver
 - Organization Driver
- Self-Assessment of MTSS Implementation (SAM-I)
 - This instrument is used to measure school-level implementation of a Multi-Tiered System of Supports (MTSS) in the following areas:
 - Curriculum standards
 - Assessments used to inform instruction
 - Multiple tiers of instruction and intervention
 - Data-based problem-solving used to make decisions



BIG HOLLOW SCHOOL DISTRICT 38 SCHOOL IMPROVEMENT PLANS

* GOAL ONE

Goal Areas: Instruction & Student Achievement
Smart Goal Statement: By the end of the 2021-2022 school year, the Multi-tiered System of Support (MTSS) will be fully implemented as measured by growth on the Self Assessment of MTSS Implementation (SAMI) by achieving, at a minimum, the emerging-developing rating in all six domains.



* GOAL TWO

Goal Area: Culture and Climate

Smart Goal Statement: By the end of the 2021-2022 school year, our community's perception of the diversity, equity, inclusion and belonging work will improve by a statistically significant amount as measured by the district-created DEI (Diversity, Equity, and Inclusion) survey results.





Questions

September 2021 Employment Report

Approve the employment of Tim Tanner as Transportation Driver, effective September 22, 2021.

Approve the employment of Teresa Jiron as Health Aide/LPN, effective September 27, 2021.

Approve the personnel change for Bertha Cervantes, Food Service Worker, from 5 hour server to 8 hour cook, effective September 17, 2021.

Approve the personnel change for Loremil Jensen, Food Service Worker from 5 hour server to 7 hour food service position, effective September 17, 2021.

Approve the employment of Sara Chatterjea as Elementary School Title 1 paraprofessional, effective September 28, 2021.

Approve the employment of Cynthia Pruiam Haran as 7th Grade Boys Basketball coach, effective October 8, 2021.

Approve the employment of Denise Romero-Fields as Middle School Paraprofessional, effective November 1, 2021.

Approve the employment of Chloe Kotiw as 7th Grade Girls Basketball Coach, effective October 12, 2021.

Approve the employment of Lindsay DiTusa, Middle School 12 Month Secretary, effective October 21, 2021.

BIG HOLLOW SCHOOL DISTRICT #38
New Hire Information Form

BACKGROUND

Name

Tim Tanner



ASSIGNMENT

CERTIFIED: Administrator: Teacher: If Teacher Please select ~ Gen Ed: SPED: ESL:

NON-CERTIFIED: Custodian: Food Service: Lunch Monitor:

Nurse: Paraprofessional: Secretary: Substitute:

Technology: Transportation: Yes Other:

Building: **Distiret** Grade/Area: **ALL**

Start Date: **9/22/2021** BOE Approval Date: * Board Approval is pending the completion of fingerprints, current physical, TB test, and all required paperwork

REFERENCES CONTACTED (list 2)

Name: **Paul Maplethorpe** Title: **Deputy Chief**

Name: Title:

BA BA+15 MA MA+15 MA+30

Years Credited Step

BudgetCode

Total Years Experience **0** Salary/Hourly Rate **20.67** (may be adjusted if circumstances require)

Comments:

Has Class B license, Fire Truck driver

Technology:

User ID: (firstlast) Password: (employee will change upon first login)

To be completed by New Hire:

Signature of New Hire:

Date: **9/22/21**

BIG HOLLOW SCHOOL DISTRICT #38
New Hire Information Form

BACKGROUND

Name

Teresa Jiron



ASSIGNMENT

CERTIFIED: Administrator: Teacher: If Teacher Please select ~ Gen Ed: SPED: ESL:

NON-CERTIFIED: Custodian: Food Service: Lunch Monitor:

Nurse: Paraprofessional: Secretary: Substitute:

Technology: Transportation: Other: **Health Aide/ LPN**

Building: **District** Grade/Area: **all**

Start Date: **10/14/2021** BOE Approval Date: * Board Approval is pending the completion of fingerprints, current physical, TB test, and all required paperwork

REFERENCES CONTACTED (list 2)

Name: Title:

Name: Title:

BA BA+15 MA MA+15 MA+30

Years Credited Step

BudgetCode

10-1-2130-1100

10-2-2130-1100

10-3-2130-1100

Total Years Experience **18** Salary/Hourly Rate **\$21.00** (may be adjusted if circumstances require)

Comments:

Split salary codes equally between the three buildings.

Technology:

User ID: (firstlast) **TeresaJiron** Password: (employee will change upon first login) **TJiron38**

To be completed by New Hire:

Signature of New Hire:

Date:

**BIG HOLLOW SCHOOL DISTRICT #38
Personnel Change Form**

Employee Name
Bertha Cervantes

Email Address
berthacervantes@bighollow.us

New Position: **8 Hour Cook Position**

Replacement For: **Janice Hoffman**

Building: **Prim/Elem**

Current Position: **5 hour server**

Date Change is Effective: **9-17-21**

Board Approval Date (if needed):

Certified Position

BA BA+15 MA MA+15 MA+30 Doc:

Years Credited Step

Salary:

Full or Part Time: **full**

Years Credited:

Sick: Vacation: Personal:

Budget Code:

Employee Signature:

**Michelle
Philippsen**

Date: **9-17-21**

BIG HOLLOW SCHOOL DISTRICT #38
Personnel Change Form

Employee Name
Lozemil Jensen

Email Address
lozemiljensen@bighollow.us

New Position: **7 hour position due to free brk/lunch**

Replacement For: **5 hour position**

Building: **prim/elem**

Current Position: **server/prepping**

Date Change is Effective: **9-17-21**

Board Approval Date (if needed):

Certified Position

BA BA+15 MA MA+15 MA+30 Doc:

Years Credited Step

Salary:

Full or Part Time: **full**

Years Credited:

Sick: Vacation: Personal:

Budget Code:

Employee Signature:

Michelle
Philippsen

Date: **9-17-21**

BIG HOLLOW SCHOOL DISTRICT #38
New Hire Information Form

BACKGROUND

Name

Sara Chatterjea



ASSIGNMENT

CERTIFIED: Administrator: **no** Teacher: **no** If Teacher Please select ~ Gen Ed: **no** SPED: **no** ESL: **no**

NON-CERTIFIED: Custodian: **no** Food Service: **no** Lunch Monitor: **no**

Nurse: **no** Paraprofessional: **Yes** Secretary: **no** Substitute: **no**

Technology: **no** Transportation: **no** Other: **Title I Para**

Building: **Elementary Grade/Area: 2-4**

Start Date: **9-28-21** BOE Approval Date: * Board Approval is pending the completion of fingerprints, current physical, TB test, and all required paperwork

REFERENCES CONTACTED (list 2)

Name: **Judy Griffeth** Title: **Supervisor-Allendale**

Name: **Kelly Timm** Title: **Client-Home Child Care**

BA BA+15 MA MA+15 MA+30

Years Credited Step

BudgetCode

10E200 1222 1100 00 100000

Total Years Experience **22** Salary/Hourly Rate **\$20.29** (may be adjusted if circumstances require)

Comments:

12 years credited experience with a BA degree and a MA in Education.

Technology:

User ID: (firstlast) **Sara Chatterjea** Password: (employee will change upon first login) **SChatterjea38**

To be completed by New Hire:

Signature of New Hire:

Date:

BIG HOLLOW SCHOOL DISTRICT #38
New Hire Information Form

BACKGROUND

Name

Cynthia Pruim Haran



ASSIGNMENT

CERTIFIED: Administrator: Teacher: If Teacher Please select ~ Gen Ed: SPED: ESL:

NON-CERTIFIED: Custodian: Food Service: Lunch Monitor:

Nurse: Paraprofessional: Secretary: Substitute:

Technology: Transportation: Other: **Coach**

Building: **BHMS** Grade/Area: **7B Basketball**

Start Date: **10/8/2021** BOE Approval Date: * Board Approval is pending the completion of fingerprints, current physical, TB test, and all required paperwork

REFERENCES CONTACTED (list 2)

Name: Title:

Name: Title:

BA BA+15 MA MA+15 MA+30

Years Credited Step

BudgetCode

10-3-1500-1100-50

Total Years Experience **0** Salary/Hourly Rate **3079** (may be adjusted if circumstances require)

Comments:

Technology:

User ID: (firstlast) Password: (employee will change upon first login)

To be completed by New Hire:

Signature of New Hire:

Date:

BIG HOLLOW SCHOOL DISTRICT #38
New Hire Information Form

BACKGROUND

Name

Denise Romero-Fields



ASSIGNMENT

CERTIFIED: Administrator: Teacher: If Teacher Please select ~ Gen Ed: SPED: ESL:

NON-CERTIFIED: Custodian: Food Service: Lunch Monitor:

Nurse: Paraprofessional: **Yes** Secretary: Substitute:

Technology: Transportation: Other:

Building: **Middle** Grade/Area: **SPED**

Start Date: **11/1/21** BOE Approval Date: * Board Approval is pending the completion of fingerprints, current physical, TB test, and all required paperwork

REFERENCES CONTACTED (list 2)

Name: **Griselda Maniatis** Title: **Supervisor**

Name: **Catherine Wrenn** Title: **Coordinator**

BA BA+15 MA MA+15 MA+30

Years Credited Step

BudgetCode

Total Years Experience **4** Salary/Hourly Rate **18.83** (may be adjusted if circumstances require)

Comments:

Talked with Mr. Gold for approval. She is bilingual and currently completing a dual BS/MA in Education program.

Technology:

User ID: (firstlast) Password: (employee will change upon first login)

To be completed by New Hire:

Signature of New Hire:

Date:

BIG HOLLOW SCHOOL DISTRICT #38
New Hire Information Form

BACKGROUND

Name

Chloe Kotiw



Email Address

chloekotiw@bighollow.us

ASSIGNMENT

CERTIFIED: Administrator: Teacher: If Teacher Please select ~ Gen Ed: SPED: ESL:

NON-CERTIFIED: Custodian: Food Service: Lunch Monitor:

Nurse: Paraprofessional: Secretary: Substitute:

Technology: Transportation: Other: **Basketball Coach**

Building: **BHMS** Grade/Area: **7 Girls**

Start Date: **10/12/2021** BOE Approval Date: * Board Approval is pending the completion of fingerprints, current physical, TB test, and all required paperwork

REFERENCES CONTACTED (list 2)

Name: Title:

Name: Title:

BA BA+15 MA MA+15 MA+30

Years Credited Step

BudgetCode

10-300-1500-1100-51

Total Years Experience **0** Salary/Hourly Rate **3079** (may be adjusted if circumstances require)

Comments:

Technology:

User ID: (firstlast) Password: (employee will change upon first login)

To be completed by New Hire:

Signature of New Hire:

Date:

BIG HOLLOW SCHOOL DISTRICT #38
New Hire Information Form

BACKGROUND

Name

Lindsay DiTusa



ASSIGNMENT

CERTIFIED: Administrator: Teacher: If Teacher Please select ~ Gen Ed: SPED: ESL:

NON-CERTIFIED: Custodian: Food Service: Lunch Monitor:

Nurse: Paraprofessional: Secretary: Yes Substitute:

Technology: Transportation: Other:

Building: **Middle School** Grade/Area: **Admin Asst.**

Start Date: **10/21** BOE Approval Date: * Board Approval is pending the completion of fingerprints, current physical, TB test, and all required paperwork

REFERENCES CONTACTED (list 2)

Name: **Catherine Mueller** Title: **Manager**

Name: **Gretchen Barylak** Title: **Client Leader**

BA BA+15 MA MA+15 MA+30

Years Credited Step

BudgetCode

10-3-2412-1100

Total Years Experience **14** Salary/Hourly Rate **\$16** (may be adjusted if circumstances require)

Comments:

Per Mr. Gold- this is approved based on her years of experience.

Technology:

User ID: (firstlast) Password: (employee will change upon first login)

To be completed by New Hire:

Signature of New Hire:

Date:

Big Hollow Middle School Library Furniture



Six pods of 3 tables (with casters) that will sit 36+ students for the main area of the library. Pods can be moved and reconfigured according to our needs. (Line items 2, 3, 4)



Four Foamcore rockers and a laminated top ottoman for the area by the glass brick wall. This area is a "quiet" zone. (Line items 1, 5)



Three puzzle shaped tables for the back of the library for a small group work area. (Line item 9)



Three hi-top cafe tables with 3 cafe seats each for a small group & independent work area. (Line items 6, 7, 8)

Please note - line items 7, 8, & 9 are being donated by Frank Cooney.

David Cichosz 192
630-470-5184 dcichosz@frankcooney.com

DC210909 - Big Hollow Library

PROPOSAL FOR:

SHIP TO:

Part Number	Qty.	Manufacturer / Description	Unit	Ext
FK-027	4	Fomcore Rock'n'Roller; Grade 3, Momentum Free Oasis	\$498.90	\$1,995.60

1

TAG:

LOCATION:

EL72CR#EA	18	Smith System 72" Crescent, Adjustable Height ,19-33 with glides (21.5"-35.5" adj. height w/ optional casters); Fusion Maple top; Mint Edge; Platinum Legs	\$434.25	\$7,816.50
-----------	----	--	----------	------------

2

TAG:

LOCATION:

Part Number	Qty.	Manufacturer / Description	Unit	Ext
-------------	------	----------------------------	------	-----

Exhibit 11

17578BLA	18	Smith System 3" Black Elemental Casters (pack of 5)	\$59.63	\$1,073.34
----------	----	--	---------	------------

3

TAG:

LOCATION:

SMFLV11879	60	SMITH SYSTEM	\$74.81	\$4,488.60
------------	----	--------------	---------	------------

4



Flavors; Cantilever chair, A shell, 18H

Shell Finish	SSPLASTIC	*SHELL:Smith System Plastic
Smith System Plastic	CHARCOAL	CHARCOAL
Frame Finish	SSPAINT	*FRAME:Smith System Paint
Smith System Paint	PLT	PLATINUM
** OPTIONS **	GLIDES	*OPT:Glides
Glides	NYLGLD	Standard Nylon Base Glide

TAG:

LOCATION:

F005-36x21 (G, L, C)	1	Fomcore	\$1,315.19	\$1,315.19
----------------------	---	---------	------------	------------

5

TAG:

LOCATION:

HICS7	3	HON	\$336.38	\$1,009.14
-------	---	-----	----------	------------

6



Ignition Cafe Height Stool 4-leg Frame

Select Arm Type	.N	Arm: Armless
Select Caster/Glide Option	.E	Nylon Glide
Select Back	.TI	Back: Titanium ReActiv
Select Upholstery	\$(3COM)	Gr 3 COM Uph
Grd 3 COM	.S251110XP	Silvertex/Acid/MTS/Pat
Select Frame Color	.PLAT	Textured Platinum Metallic

TAG:

LOCATION:

Part Number	Qty.	Manufacturer / Description	Unit Exhibit 11	Ext
2827	3	VS America Rondo Lift Table 47 1/4D from FCC Stock	\$0.00	\$0.00

7

TAG:

LOCATION:

HICS7.N.E.TI.SX34.PLA T	6	HON HON Igintion Cafe Height Stool, Armless, On Glides, From FCC Stock	\$0.00	\$0.00
----------------------------	---	---	--------	--------

8

TAG:

LOCATION:

1470MA	3	VS America Puzzle Team Table, Maple Top, Arctic Base, 30"H, From FCC Stock	\$0.00	\$0.00
--------	---	---	--------	--------

9

TAG:

LOCATION:

Deliver	1	Frank Cooney Co. Delivery and Installation of all product	\$2,426.00	\$2,426.00
---------	---	--	------------	------------

10

TAG:

LOCATION:

TOTAL: \$20,124.37

Signature: _____

Date: _____

Total: _____



Morley, Melissa <melissamorley@bighollow.us>

Fwd: Open Records Request - IL - Big Hollow SD 38

1 message

Gold, Bob <bobgold@bighollow.us>
To: Melissa Morley <melissamorley@bighollow.us>

Wed, Sep 15, 2021 at 7:00 AM

Can you take care of this one for me please?

----- Forwarded message -----

From: **Janie Jordan** <janie@dataresearchpartners.com>
Date: Tue, Sep 14, 2021 at 2:34 PM
Subject: Open Records Request - IL - Big Hollow SD 38
To: <BobGold@bighollow.us>

Dear Mr. Gold,

Please see the attached Open Records request.

Thank you,

Janie Jordan

Data Research Partners LLC

Data Manager

janie@dataresearchpartners.com

--

Bob Gold
Superintendent
Big Hollow School District 38

847-740-1490 x5402 (office)
309-645-9237 (cell)

@bobgold_supt(Twitter)
@bobgold72 (Twitter)

Our Vision: "Big Hollow School District #38 will be a model of student achievement for elementary school districts in the State of Illinois."

Our Mission: "Inspiring a diverse school community to be passionate and empathetic learners."

"This message and any attachment constitute a PRIVATE and CONFIDENTIAL communication and may contain legally privileged information. Do not share any information from this communication with any one unless you have received permission from the sender. If you are not the intended recipient, further distribution or use of these items is

9/15/21, 2:14 PM

Big Hollow School District 38 Mail - Fwd: Open Records Request - IL - Big Hollow SD 38

Exhibit 12

prohibited. In that case, do not read, copy or use the information contained herein or disclose it to others. Please notify the sender of the delivery error by replying to this message and then delete it from your system."

 **IL - Big Hollow SD 38.doc**
28K



Morley, Melissa <melissamorley@bighollow.us>

Open Records Request

1 message

Morley, Melissa <melissamorley@bighollow.us>

Wed, Sep 15, 2021 at 3:44 PM

To: janie@dataresearchpartners.com

Cc: Bob Gold <bobgold@bighollow.us>

Good Afternoon,

Attached is the information you requested on the employees of Big Hollow School District 38.

Please let me know if you need anything additional.

--

Melissa Morley

District Secretary

Superintendent's Office

Big Hollow District #38

847-740-1490 x 5015

"This message and any attachment constitute a PRIVATE and CONFIDENTIAL communication and may contain legally privileged information. Do not share any information from this communication with any one unless you have received permission from the sender. If you are not the intended recipient, further distribution or use of these items is prohibited. In that case, do not read, copy or use the information contained herein or disclose it to others. Please notify the sender of the delivery error by replying to this message and then delete it from your system."

 **directory.xlsx**
23K



Gold, Bob <bobgold@bighollow.us>

10/5/2021 FOIA request from NBC5 Chicago

2 messages

Smyser, Katherine (NBCUniversal) <Katy.Smyser@nbcuni.com>
To: "bobgold@bighollow.us" <bobgold@bighollow.us>

Mon, Oct 4, 2021 at 6:36 PM

October 5, 2021

Bob Gold

Superintendent

[Big Hollow School District 38](#)[26051 West Nippersink Road](#)[Ingleside, IL 60041-8785](#)Sent via email to: bobgold@bighollow.us

Dear Mr. Gold:

This is a request under the Illinois Freedom of Information Act.

First, please forgive me if I have incorrect FOIA contact information. If you can let me know if I need to redirect this request to a different email or different name, I'd really appreciate it, and I promise to update my contact list for future FOIAs.

I am making this request of all governmental entities across the greater Chicago area, as I gather material on all unclaimed funds held by (or due to) people and entities in our area, including Big Hollow School District 38. I am preparing a series of reports on the scope and breadth of unclaimed money due to Chicago-area individuals, governmental bodies, and others.

This is a three-part request. If these documents are controlled by a separate office or governmental entity, it's likely I've sent a similar FOIA request to them as well. Conversely, if your office handles this material for other offices or departments, be aware that I've probably sent a FOIA request to them as well. I'm hoping that, wherever possible, such FOIAs can be combined, to avoid multiple offices having to respond with the same paperwork and data.

First, I am requesting all documents, data, and/or spreadsheets sufficient to show all unclaimed funds under the control of Big Hollow School District 38 which have NOT been reported or transferred to the Illinois State Treasurer for inclusion in the state's Unclaimed Property fund and database. This would include unclaimed money and property that is not yet old enough to be transferred to the Treasurer, including unclaimed refunds of any type; uncashed and/or "stale" checks or warrants; refunds or reimbursements for taxes, tuition, housing, incidentals, insurance payments, expenses, or any other type of refund or reimbursement; and all other unclaimed property and money which is currently under the control of your agency. For all documents, data or spreadsheets that contain information on these unclaimed funds, I am requesting all

fields of data, including the specific amount of each unclaimed fund; the name and the address of each person or entity to which each fund is due; a description of what each piece of unclaimed property or money is; any control number or property number attached to each property; and any applicable dates connected with each piece of unclaimed property. Exhibit 12

Second, I am requesting documents, data, and/or spreadsheets showing all unclaimed property which your office HAS reported and/or transferred to the Illinois State Treasurer, in response to the requirements of Illinois' Revised Uniform Unclaimed Property Act, from January 1, 2016 to the present. I request that these documents, data and/or spreadsheets include all available fields, including the specific amount of each parcel of unclaimed property which was reported and/or transferred to the Illinois Treasurer's office; a description of what the property or cash is; the name and address of the person or entity due the property or cash; any date associated with each parcel of unclaimed property or cash; and any control number or other reference number for the property or cash.

Third, I am requesting documents, data and/or spreadsheets showing all claims for unclaimed property DUE TO Big Hollow School District 38 FROM the Illinois Treasurer's Unclaimed Property fund, for which you have submitted a claim or documentation to the Illinois Treasurer's Office, from January 1, 2016 to the present, including the amount of each property claimed; the date your office submitted the claim, the property ID number from the Illinois State Treasurer's Unclaimed Property database, and the current status of each claim you submitted (i.e., whether you received the property or money, or whether the claim is still pending).

Because this request is in the public interest, I request that you waive all fees. And if you reject any portion of this request, please tell me why.

I would be more than happy to help, in any way possible, as you work on this FOIA request. And – again – if you are able to combine this FOIA request with others I've sent to related offices (so that you don't have to duplicate this paperwork), please do. And if you have any questions or need any further information from me, please don't hesitate to email me at katy.smyser@nbcuni.com.

Thank you in advance for your help with this request!

Katy Smyser

Gold, Bob <bobgold@bighollow.us>
To: "Smyser, Katherine (NBCUniversal)" <Katy.Smyser@nbcuni.com>

Tue, Oct 5, 2021 at 11:50 AM

Katy-

To the best of my knowledge:

1. We do not have unclaimed funds under the control of *Big Hollow School District 38* which have **NOT** been reported or transferred to the Illinois State Treasurer.
2. We do not have unclaimed property which our office has reported and/or transferred to the Illinois State Treasurer.
3. We do not have any claims for unclaimed property **DUE TO Big Hollow School District 38 FROM** the Illinois Treasurer's Unclaimed Property fund, for which we have submitted a claim or documentation to the Illinois Treasurer's Office

Bob Gold
Superintendent

Big Hollow School District 38

847-740-1490 x5402 (office)
309-645-9237 (cell)

@bobgold_supt(Twitter)
@bobgold72 (Twitter)

Our Vision: "Big Hollow School District #38 will be a model of student achievement for elementary school districts in the State of Illinois."

Our Mission: "Inspiring a diverse school community to be passionate and empathetic learners."

"This message and any attachment constitute a PRIVATE and CONFIDENTIAL communication and may contain legally privileged information. Do not share any information from this communication with any one unless you have received permission from the sender. If you are not the intended recipient, further distribution or use of these items is prohibited. In that case, do not read, copy or use the information contained herein or disclose it to others. Please notify the sender of the delivery error by replying to this message and then delete it from your system."

[Quoted text hidden]



Morley, Melissa <melissamorley@bighollow.us>

Fwd: SmartProcure FOIA Request to Big Hollow School District No. 38 For PO/Vendor Information

1 message

Gold, Bob <bobgold@bighollow.us>
To: Melissa Morley <melissamorley@bighollow.us>

Thu, Oct 7, 2021 at 1:01 PM

Bob Gold
Superintendent
Big Hollow School District 38847-740-1490 x5402 (office)
309-645-9237 (cell)@bobgold_supt(Twitter)
@bobgold72 (Twitter)

Our Vision: "Big Hollow School District #38 will be a model of student achievement for elementary school districts in the State of Illinois."

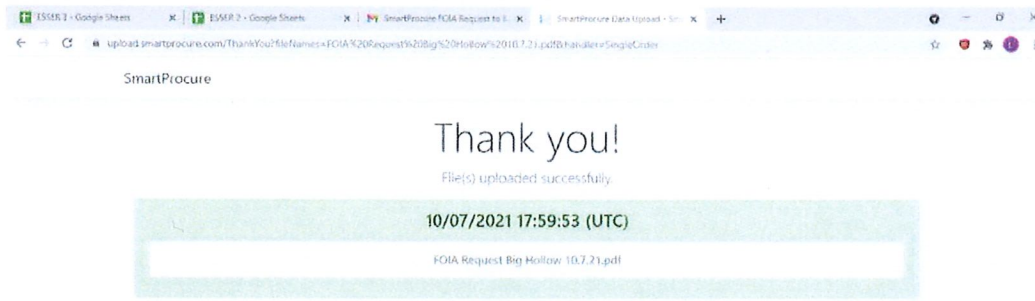
Our Mission: "Inspiring a diverse school community to be passionate and empathetic learners."

"This message and any attachment constitute a PRIVATE and CONFIDENTIAL communication and may contain legally privileged information. Do not share any information from this communication with any one unless you have received permission from the sender. If you are not the intended recipient, further distribution or use of these items is prohibited. In that case, do not read, copy or use the information contained herein or disclose it to others. Please notify the sender of the delivery error by replying to this message and then delete it from your system."

----- Forwarded message -----

From: **Sural, Lauren** <laurensural@bighollow.us>
Date: Thu, Oct 7, 2021 at 1:01 PM
Subject: Fwd: SmartProcure FOIA Request to Big Hollow School District No. 38 For PO/Vendor Information
To: Gold, Bob <bobgold@bighollow.us>

The requested FOIA report has been sent.



----- Forwarded message -----

From: **Zoe Yalcin** <zyalcin@smartprocure.com>

Date: Tue, Oct 5, 2021 at 2:22 PM

Subject: SmartProcure FOIA Request to Big Hollow School District No. 38 For PO/Vendor Information

To: <laurensural@bighollow.us>

Dear Lauren Sural,

SmartProcure is submitting a commercial FOIA request to the Big Hollow School District No. 38 for any and all purchasing records from 06/30/2021 (mm/dd/yyyy) to current. The request is limited to readily available records without physically copying, scanning or printing paper documents. Any editable electronic document is acceptable.

The specific information requested from your record keeping system is:

1. Purchase order number. If purchase orders are not used a comparable substitute is acceptable, i.e., invoice, encumbrance, or check number
2. Purchase date
3. Line item details (Detailed description of the purchase)
4. Line item quantity
5. Line item price
6. Vendor ID number, name, address, contact person and their email address

If you would like to let me know what type of financial software you use, I may have report samples that help to determine how, or if, you are able to respond.

Please email or click on the button below to upload the information. There is no file size limitation:

[Click Here To Upload](#)

If this request was misrouted, please forward to the correct contact person and reply to this communication with the appropriate contact information.

If you have any questions, please feel free to respond to this email or I can be reached at the phone number below in my signature.

Regards,

Zoe Yalcin
Data Acquisition Specialist

SmartProcure

Direct: 561-609-6762

Email: zyalcin@smartprocure.com

Board of Education Administrator Report October 12, 2021

1. Good Things Happening for Kids:

Plans for Hispanic Heritage Month have been created with staff and parent involvement.

Reading Week - September 27- October 1 - P, E

PBIS Celebration-October 1-E

First ever Student Council developed and implemented- E

Birthday gifts and a book provided to each student-E

Athletic events have been a great source of enjoyment for students and families- M

Fire Drills held on October 4 and 5

ALICE lessons taught to prepare students and staff for ALICE drill

2. Good Things Happening for Staff:

De-Stress event offered for staff on September 13 & XX

Flu Shot Clinic offered on site for staff September 28 & 29

Articulation Time provided for staff to discuss implementation ideas from PD offered since beginning of school year-P, E

SchoolWide Training for staff in grades 1-8

Math Bridges Training for P/E math interventionists - September 28

3. General Information to Share:

Parent University held on September 15

Parent Coffees for Grades 2-4 held on September 14, 15 & 16

EL Curriculum Night held on September 16

CAC Meeting held on September 20

SchoolWide Training for admin on September 28

September 13, 2021

1. Good Things Happening for Kids:

Meet & Greet on August 19 for grades PreK-4

Plans for Hispanic Heritage Month have been created with staff and parent involvement

PTO Back to School Bash August 27

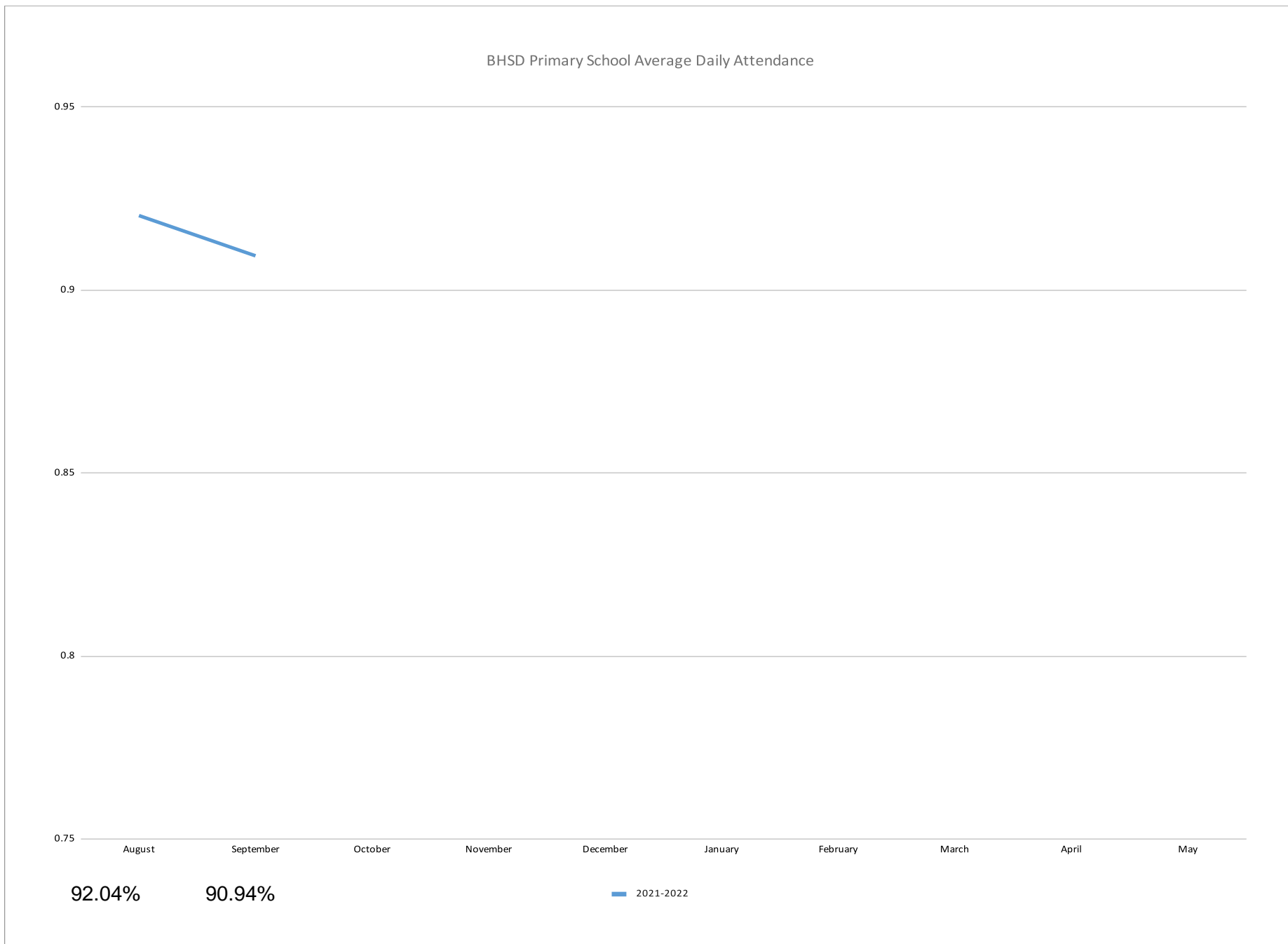
2. Good Things Happening for Staff:

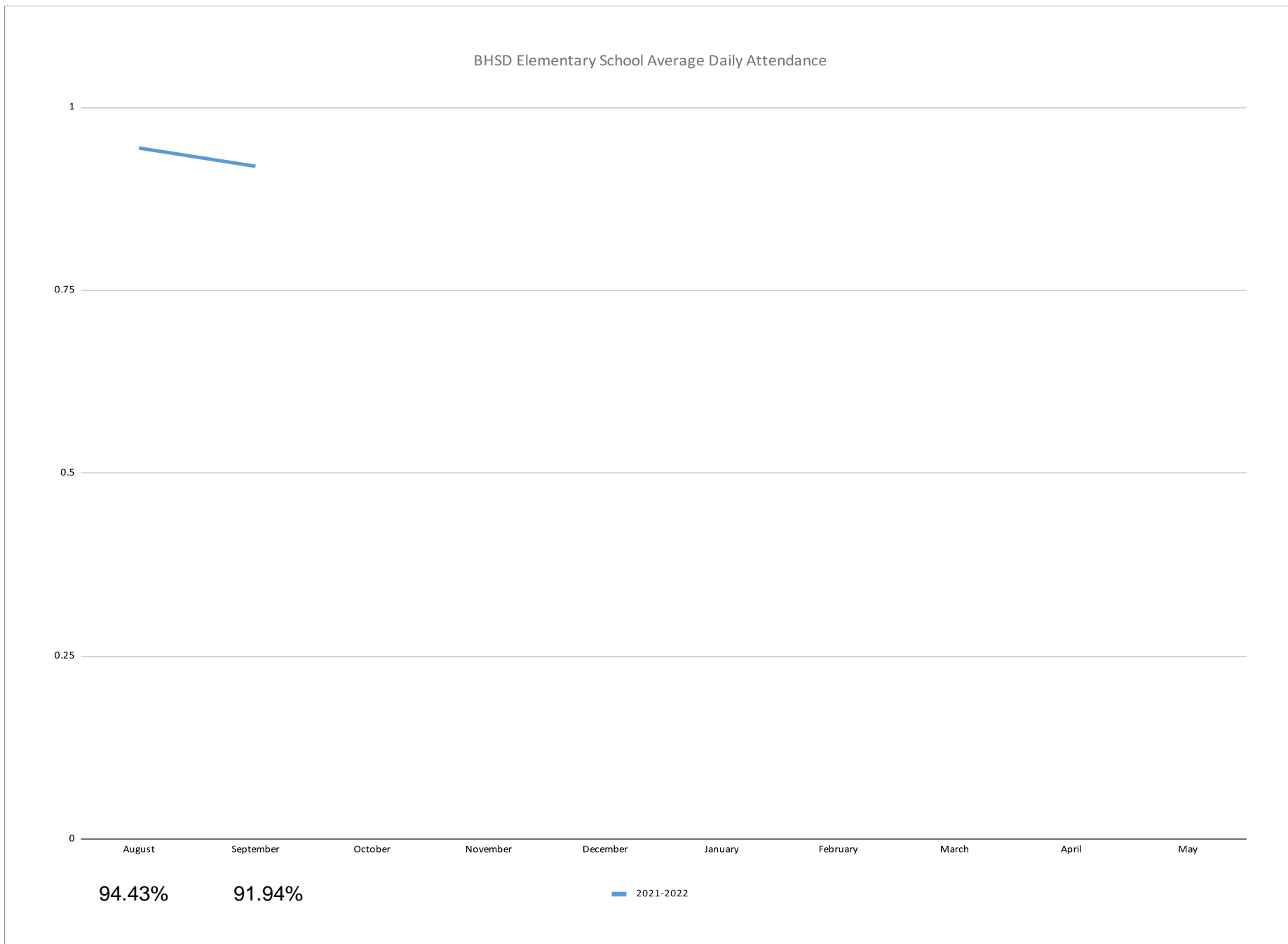
August 18, 19, 20 - Institute Days were packed with excellent PD for ALL staff

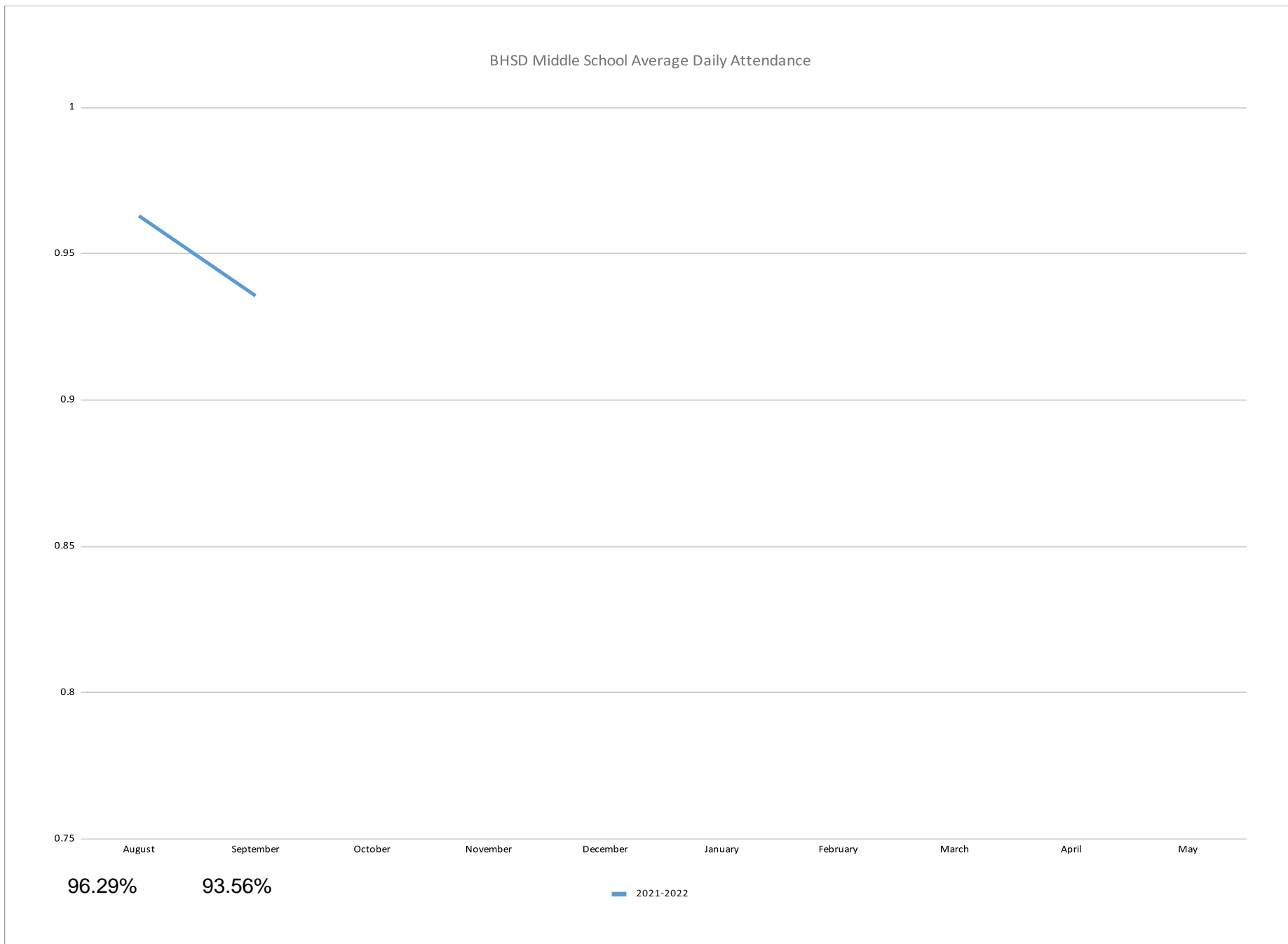
MTSS Grade Level Team Meetings

MTSS Building Leadership Team Meetings

Special Education Legal Update PD







PLC MEETING AGENDA / ACTION RECORD

Team: Administration Date: September 15, 2021 Time: Noon

<u>Team Members Present</u> Lenayn Michelle Vicki Christine Vinni Bob Matt Erin	<u>Norm</u> Take an inquiry stance Assume positive intentions Stick to protocol (task at hand) Be here now Ground statements in evidence Start and end on time Adhere to team decisions
Roles: Facilitator (be sure to review norms- 5 mins): Bob Recorder: Michelle Time Keeper: Christine Normkeeper: Erin	

Time allocations:	Purpose / Goal(s) for this meeting: <ul style="list-style-type: none"> ● Opening (10 min) ● Follow-up from recent Board meeting (10 min) ● Follow-up from recent meeting with union leadership (5 min) <ul style="list-style-type: none"> ○ Plan periods ○ End of day ● Update from LCHD/ISBE/IDPH (5 min) ● Update on COVID-19 testing/screening (10 min) ● Classroom social distancing (5 min) ● Policy and Administrative Procedure update (15 min) ● Fine Arts (concerts/plays/programs) ● SEL behavior support protocol (5 min) ● Preparations for adaptive pause (10 min) <ul style="list-style-type: none"> ○ No plans to move to this at this time, but need to be prepared in case of emergency situation ○ Building-wide, grade level, or classroom ● CAC Update (20 min) <ul style="list-style-type: none"> ○ Agenda ○ Review submitted questions ● Building/Department budget information (10 min) <ul style="list-style-type: none"> ○ 10% emergency cushion is built into budget lines (other than grants) ○ Monthly reports ● Attendance (5 min) <ul style="list-style-type: none"> ○ Truancy (5 and 10 day letters)
--------------------------	---

	<ul style="list-style-type: none"> ○ Mental health days ● Discussion on pending vacancies (5 min) ● GCHS Vaccination POD support (2 min) <p>Other :</p> <ul style="list-style-type: none"> ●

Discussions / Decision Summary:

What follow-up is needed based on the information shared at this meeting?

<u>Action Steps:</u> -	<u>Person Responsible:</u> -
<u>Agenda for Next Meeting:</u> -	<u>Data to collect and bring to next meeting:</u> -
<u>Reflection of Norms</u> - Need to review at beginning	<u>Date/Time of next meeting:</u> -



www.bighollow.us

Mr. Robert Gold, Superintendent

Big Hollow District Office
26051 W. Nippersink Rd.
Ingleside, IL 60041
Phone 847-740-1490
Fax 847-740-9172

Big Hollow Primary School (EC-1)
33335 N. Fish Lake Rd.
Ingleside, IL 60041
Phone 847-740-5320
Fax 847-740-3490

Big Hollow Elementary (2-4)
33315 N. Fish Lake Rd.
Ingleside, IL 60041
Phone 847-740-5321
Fax 847-740-3795

Big Hollow Middle School (5-8)
26051 W. Nippersink Rd.
Ingleside, IL 60041
Phone 847-740-5322
Fax 847-740-9021

**Citizen Advisory Council Meeting
Big Hollow Middle School Cafeteria
Monday, September 20, 2021
6:00 p.m. - 8:00 p.m.**

AGENDA NO. 1

- A. Call to order and Roll Call
- B. Welcome
- C. Introductions
 - a. Review roster information for additions/deletions ([Exhibit 1](#))
- D. Review CAC Bylaws which were approved by the BHS D 38 Board of Education ([Exhibit 2](#))
- E. Election of Officers
 - a. Chairperson-- Alexis Aguilar
 - b. Vice Chairperson-- TBD
 - c. Secretary-- TBD
- F. Review the schedule of CAC meetings for the 2021-2022 school year ([Exhibit 3](#))
- G. Review current objectives for the 2021-2022 school year ([Exhibit 4](#))
 - a. Additional meeting objectives can/will be added.
- H. District committee opportunities
- I. Review of student enrollments ([Exhibit 5](#))
- J. Review of the Assessment Calendar ([Exhibit 6](#))
- K. Skyward absence notification automation
- L. Diversity, Equity, Inclusion presentation ([Exhibit 7](#))
- M. [Q&A](#) as presented to administrators prior to the meeting
- N. Discuss future meeting format
 - a. Provide feedback to Alexis Aguilar
- O. Other
- P. Adjournment –8:00 p.m.

Next Meeting - Monday, October 25, 2021 – 6:00 p.m. in the BHS D Middle School Cafeteria